

# Fiber Teknologi og måleteknik

## Visuelt inspektion og kontrol



Laserklasser

Klasse 1

Klasse 2

Klasse 3A

Klasse 3B

Klasse 4



Synlig lys (rød lyskilde)<sup>+</sup>

## HiLite

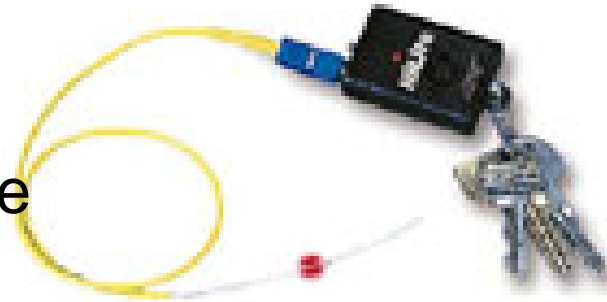
650nm visible red laser source

2.5 mm ferrule

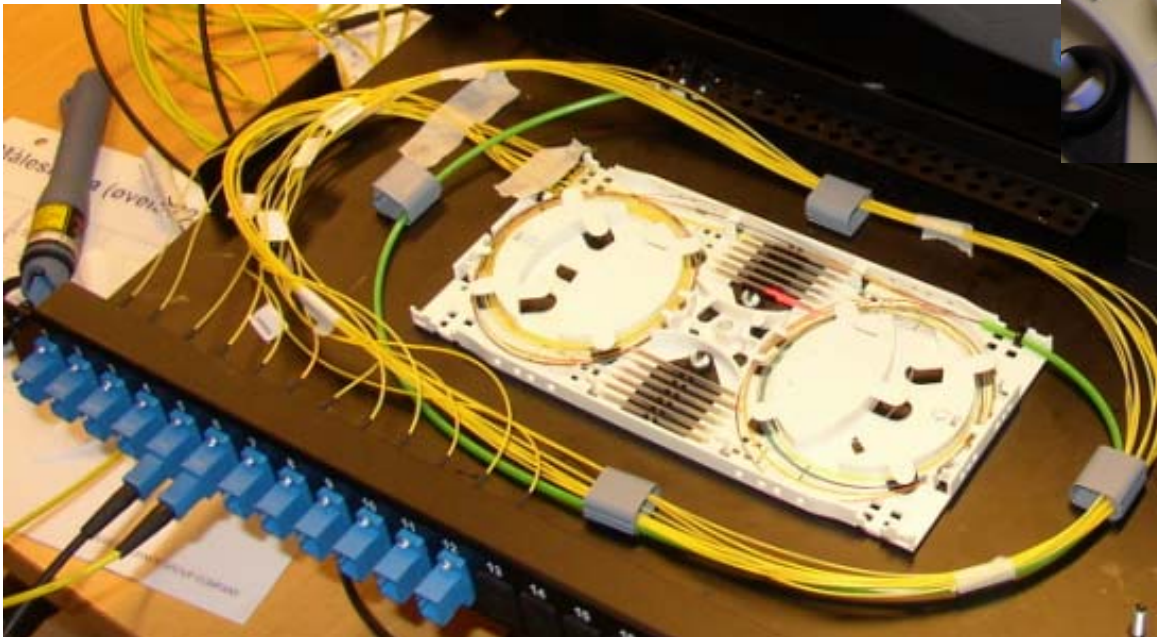
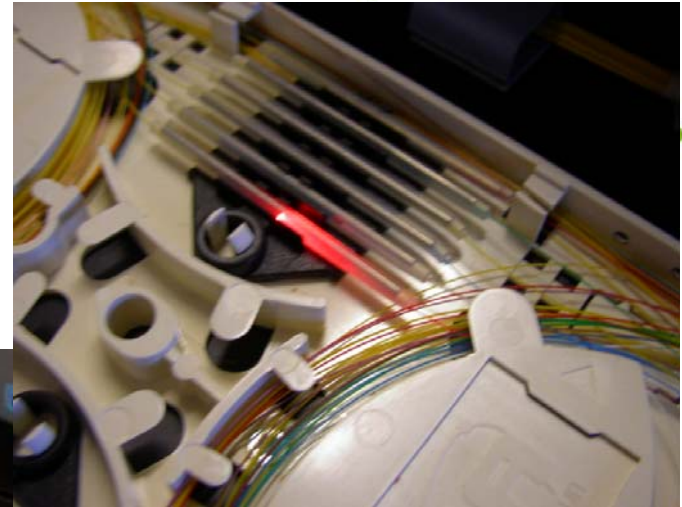
Universal connector interface for quick connection

Rækker op til 4 km – Singlemode

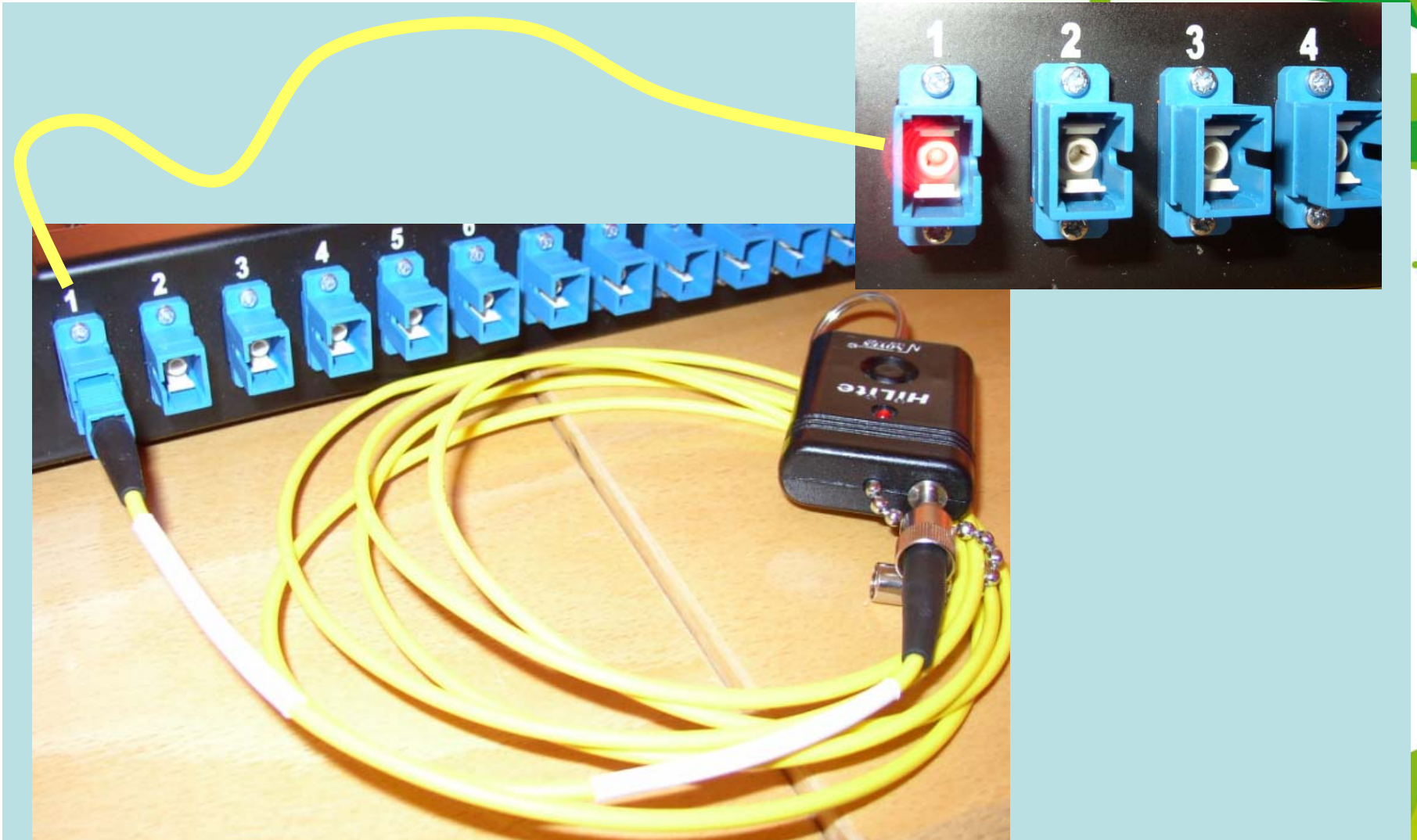
High power (1 mW)

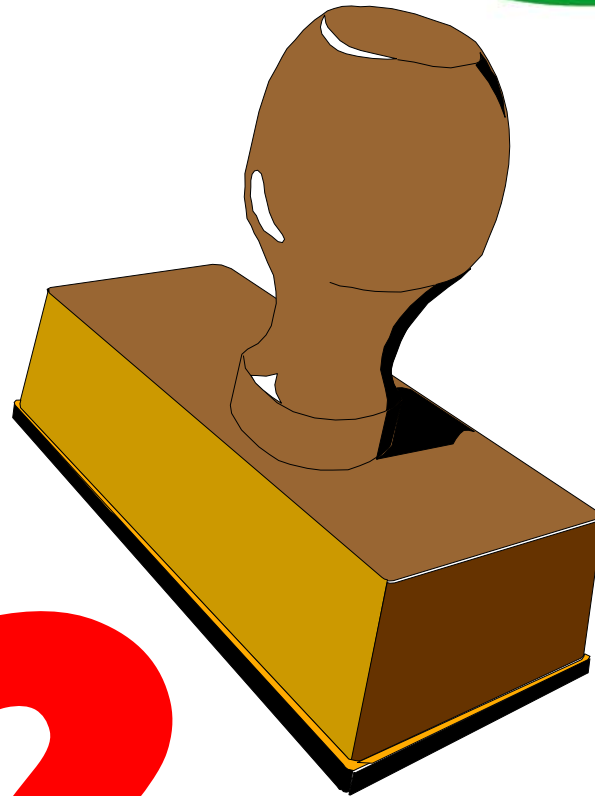


# Fejlfinding med rød lyskilde

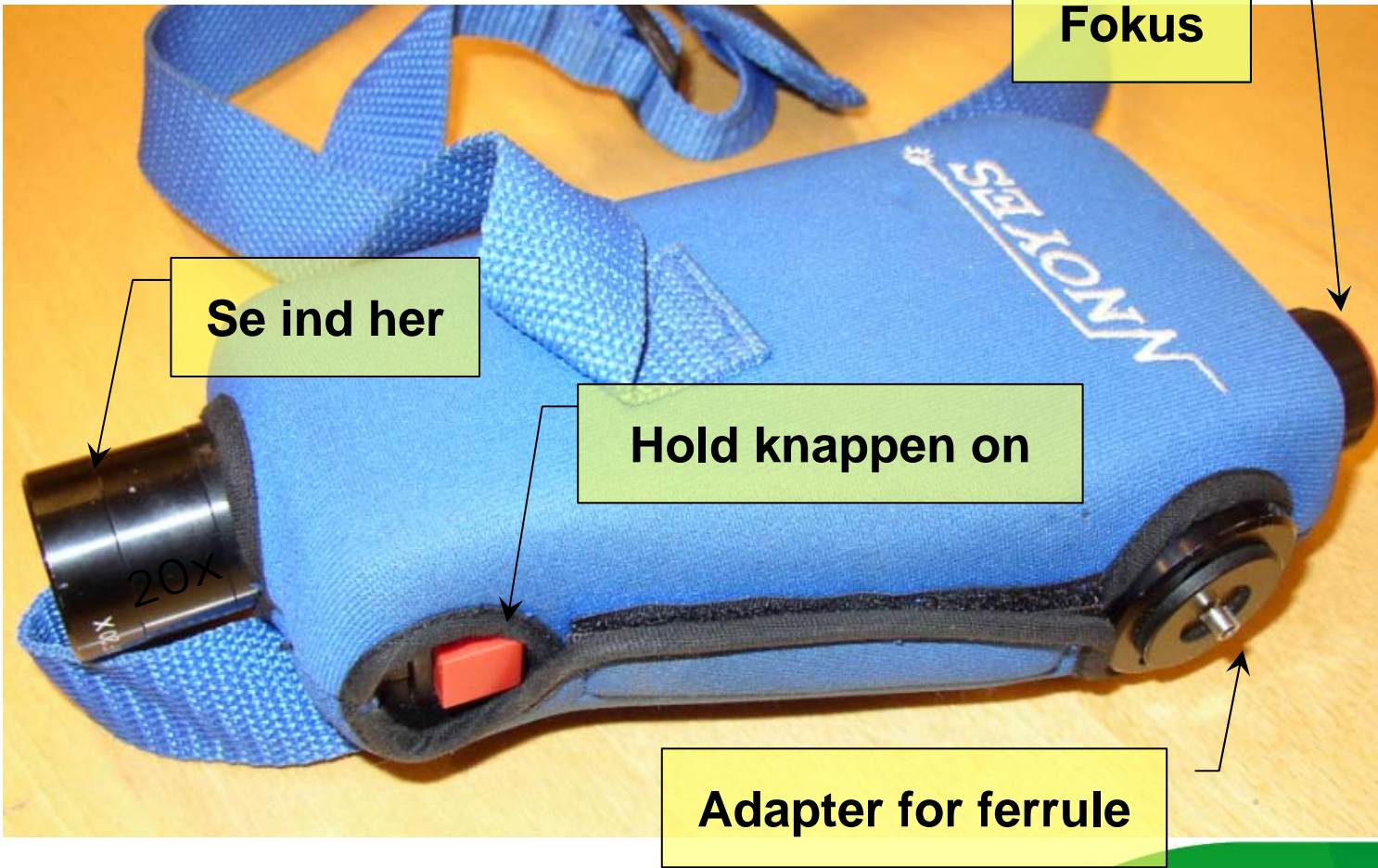






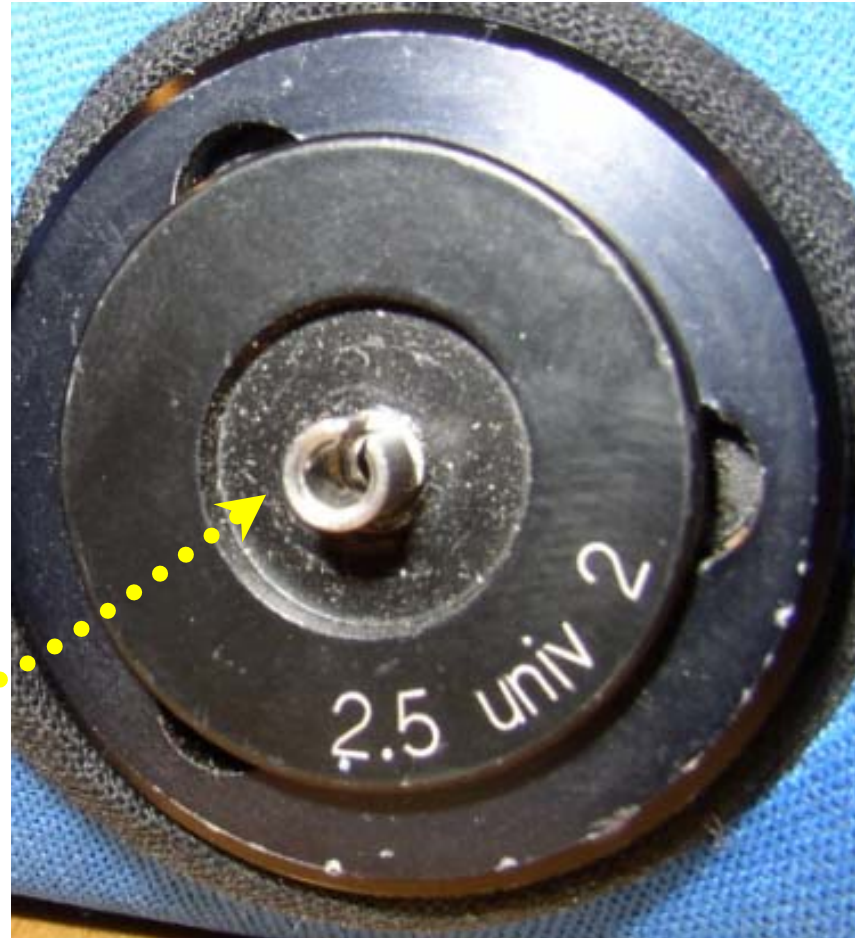
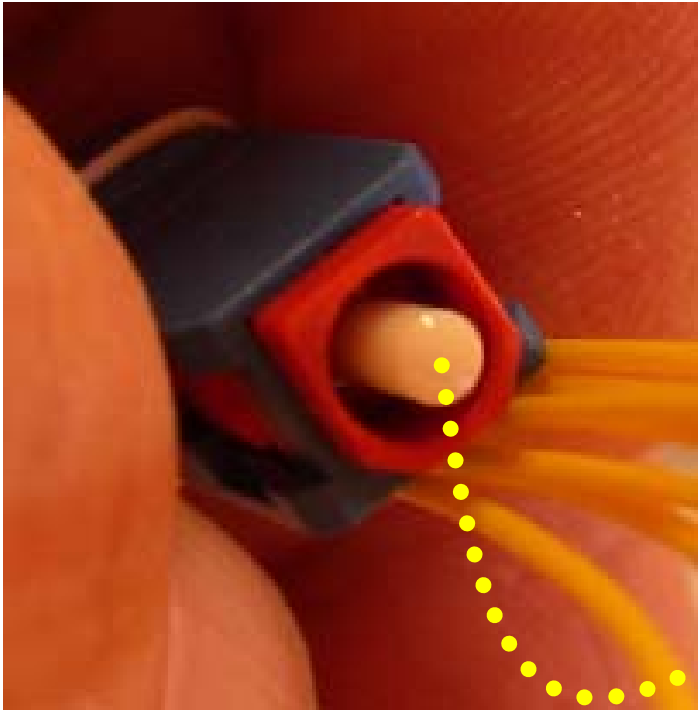


# Konnektor inspektion (OFS 300-400C)



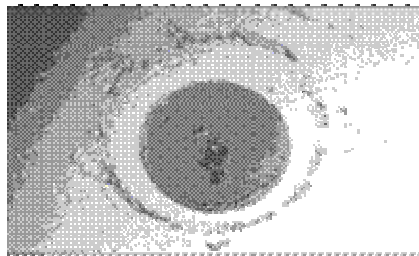
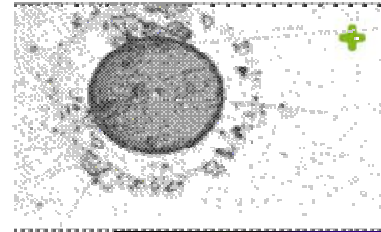


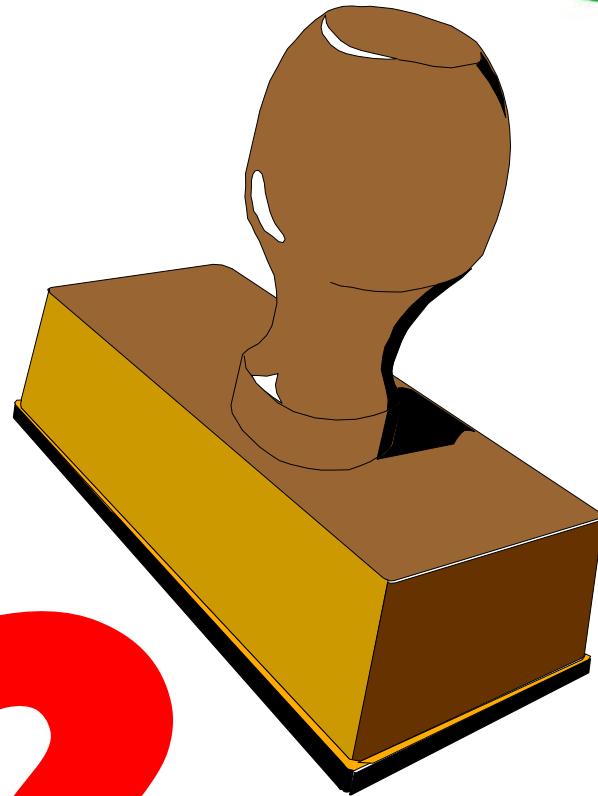
# Inspektionsmikroskop +





# Optisk video inspektion

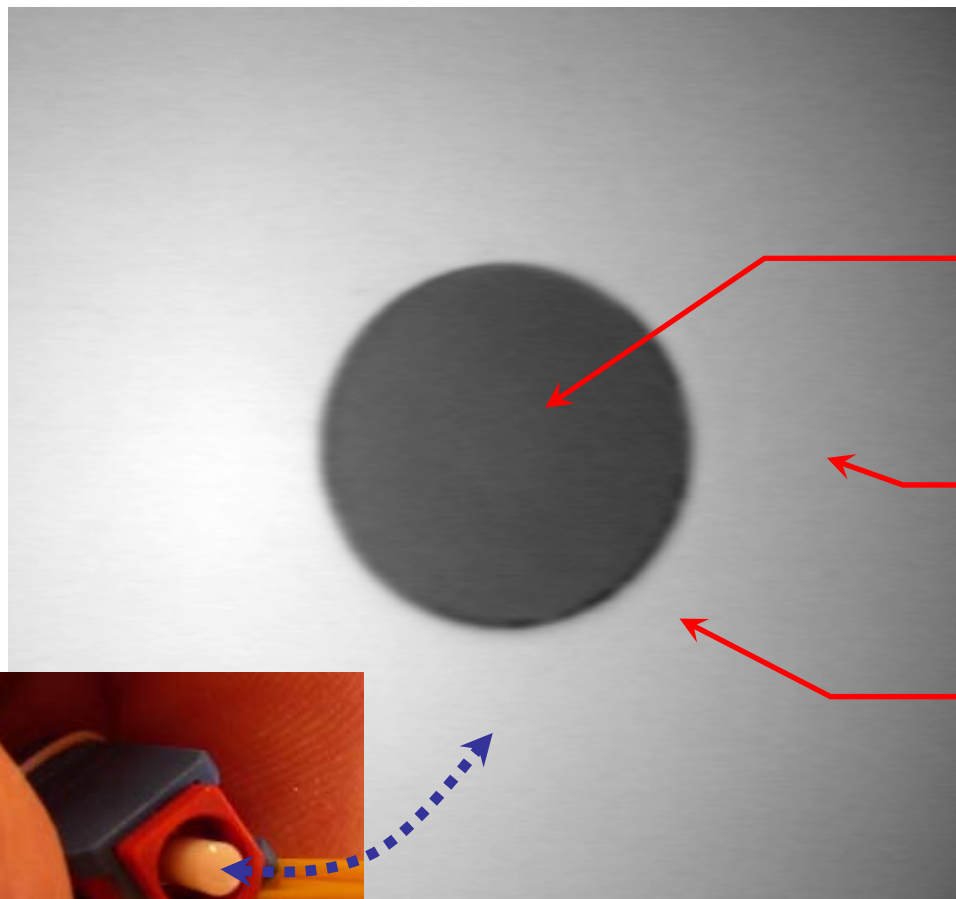






# Ferrule inspektion

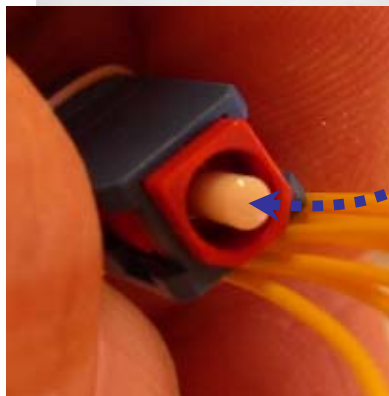
# Finish på ferrule



Fiber

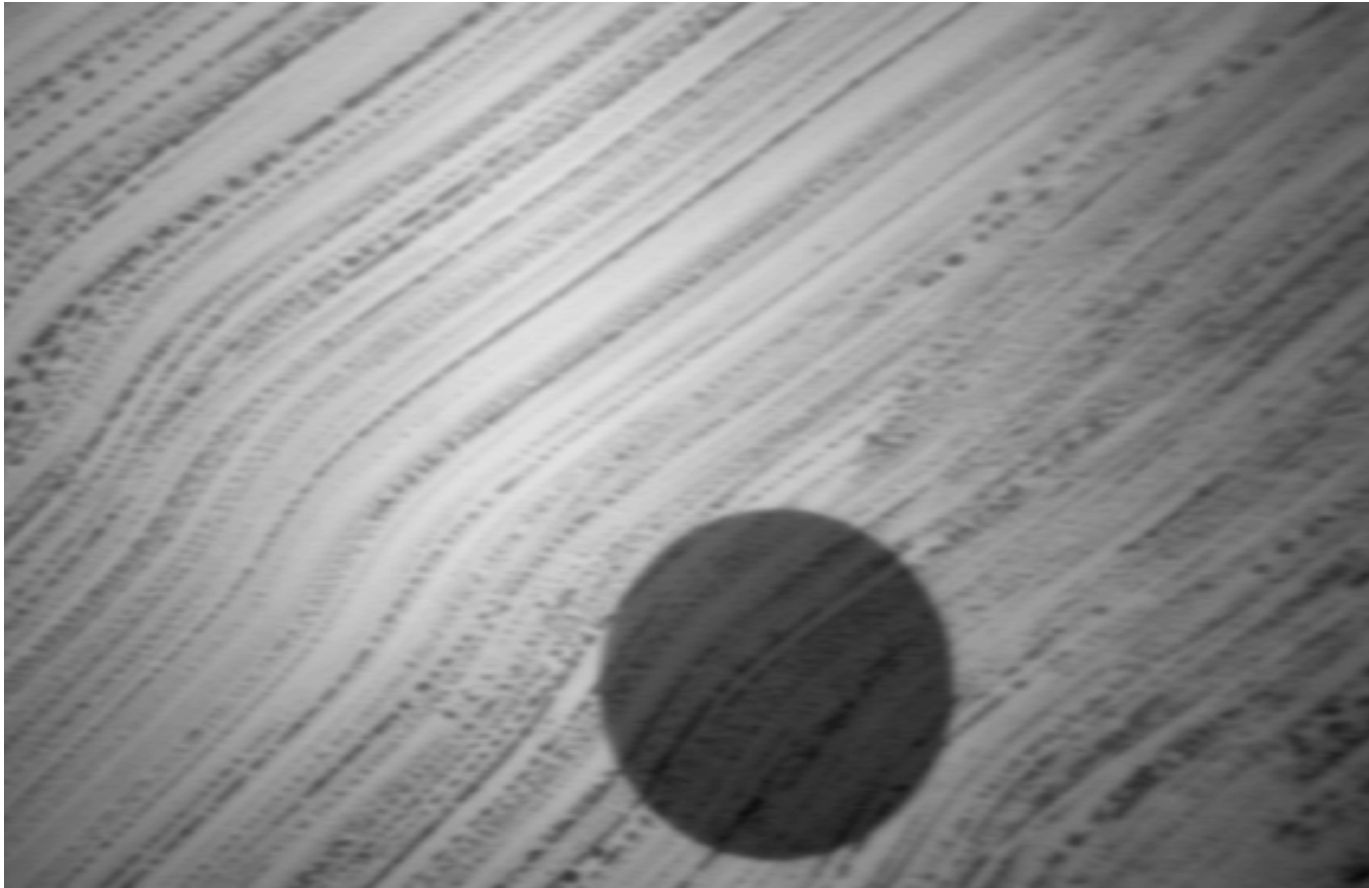
Ferrule overflade

Ønskelig polering





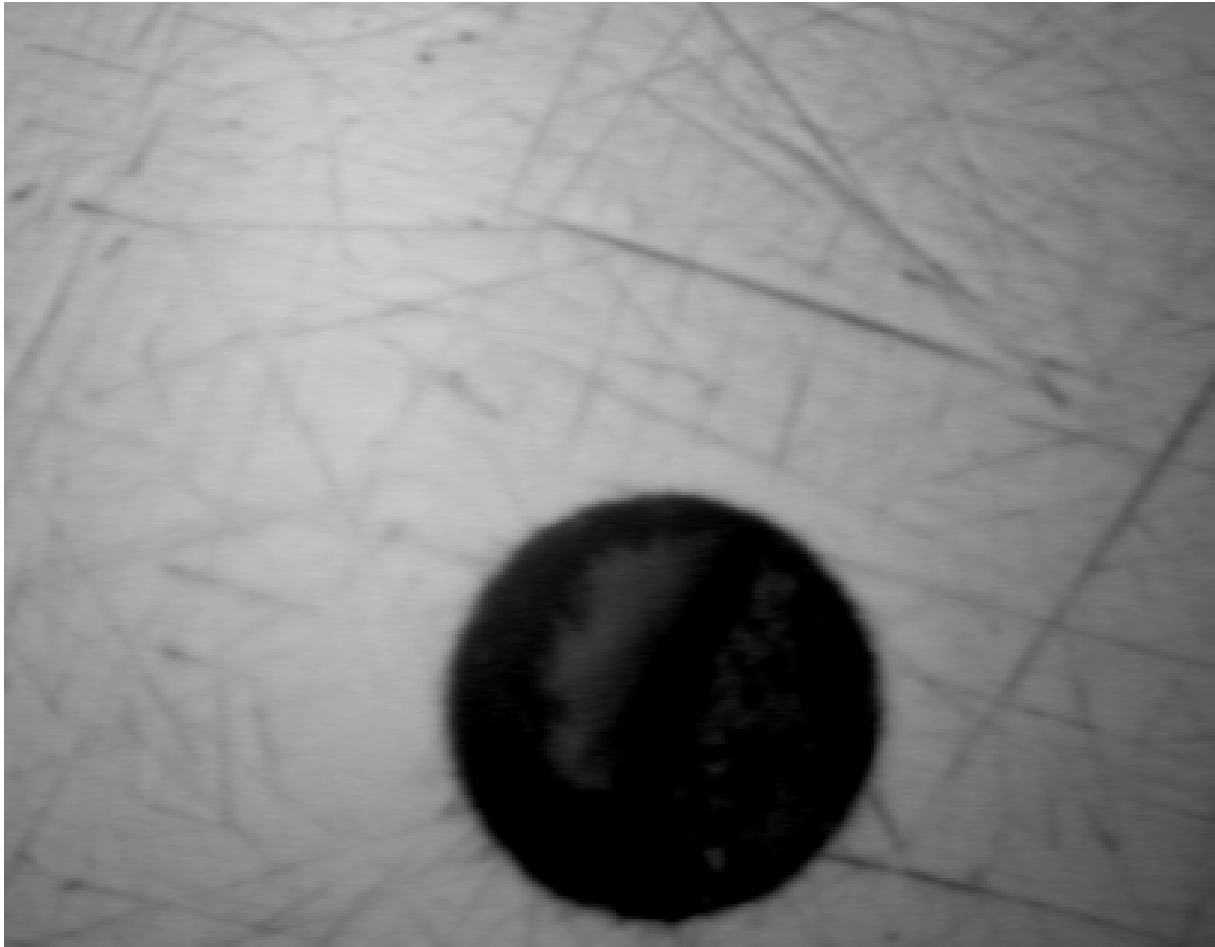
Ferrule rengjort med  
en nyvasket finger



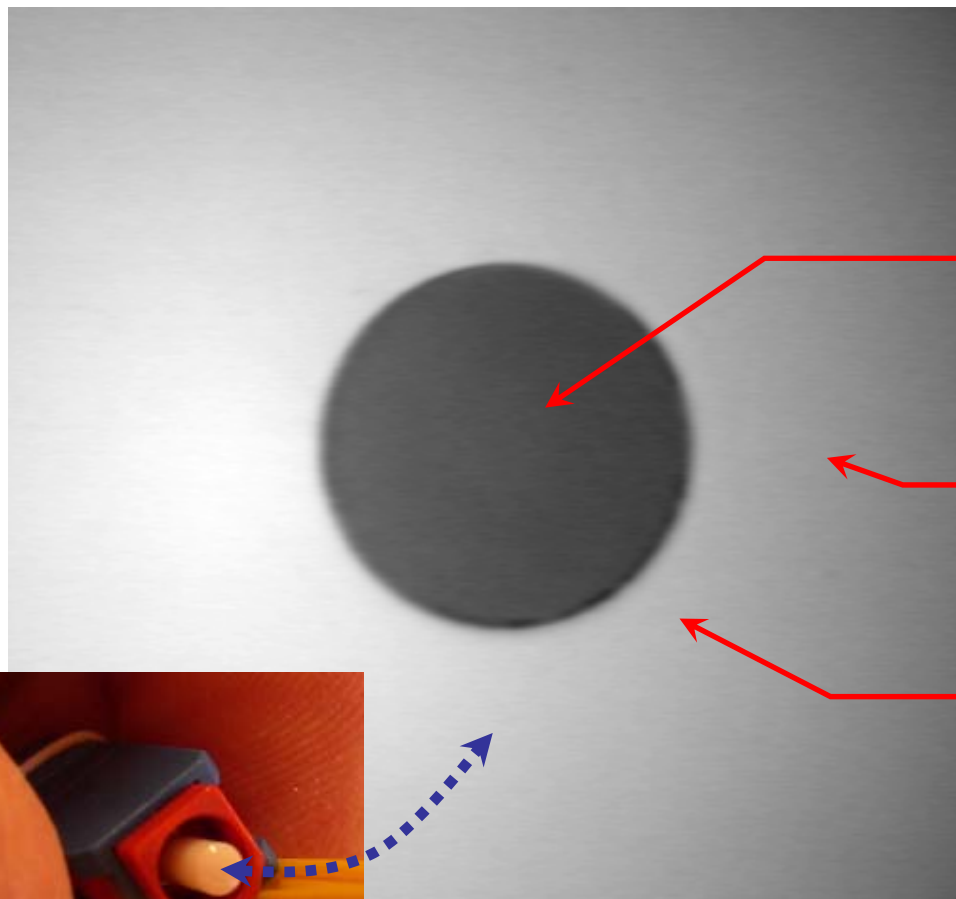
# Udåndingsluft fra en ryger...<sup>+</sup><sup>+</sup>



# Poler riser



# Finish på ferrule



Fiber

Ferrule overflade

Ønskelig polering

