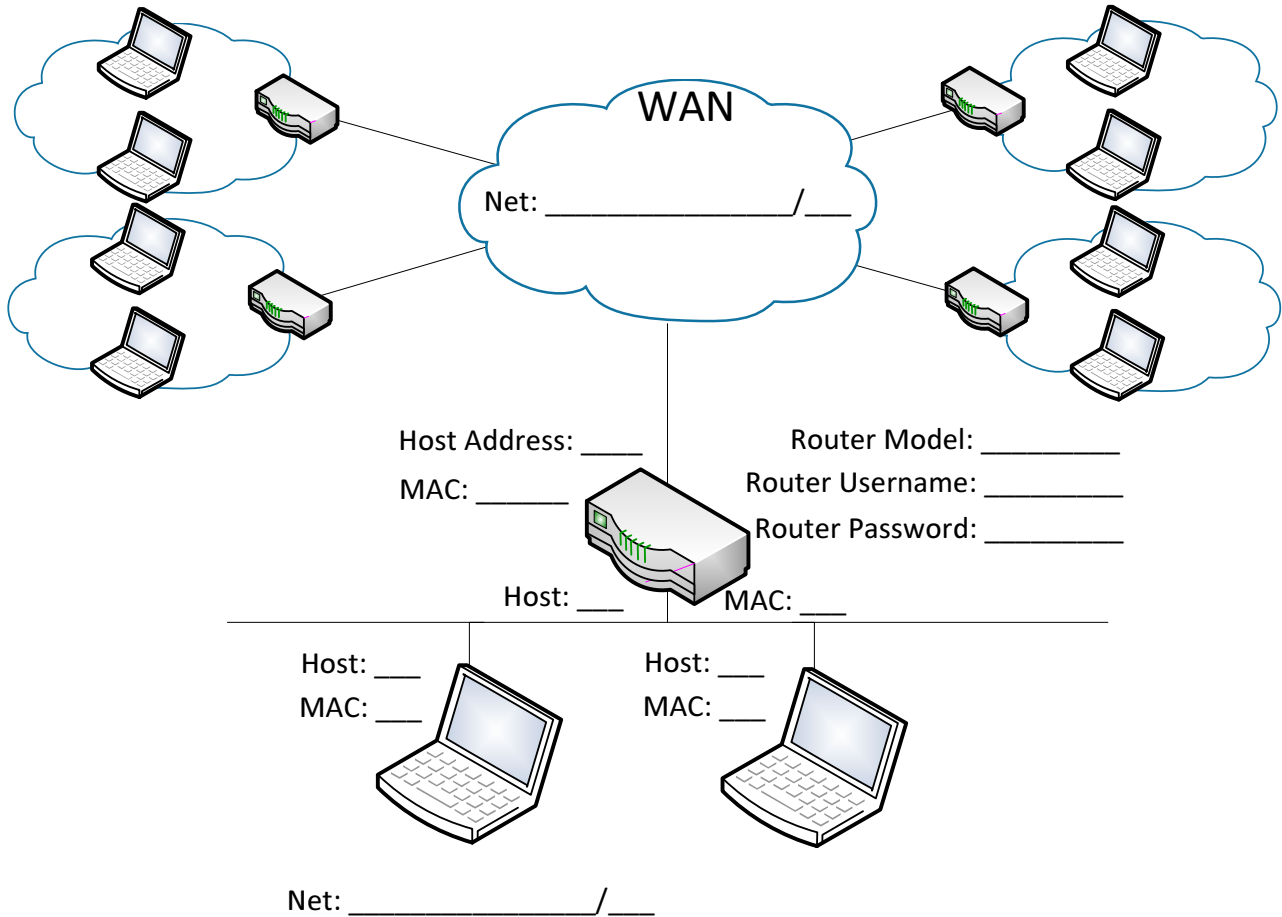


# Netværk Light B&O

Setup 1:



## Tasks:

1. Add all the missing information on the diagram
2. Make sure that all the devices are able to ping each other and the internet (8.8.8.8)
  - a. If ping isn't working on you computers, use NetCat instead.
3. Reconnect one of the computers to the WAN cloud
  - a. When the internal host is Pinging the WAN computer, what is the Source IP address seen from the WAN computer? (Use Wireshark) IP: \_\_\_\_\_
  - b. Is the WAN computer able to ping the internal Computer?
  - c. How many hops do the Internal Computer have to the WAN computer?
4. Reconnect both computer on the inside network.
  - a. Are both computers still able to ping each other?
5. Configure one of the computers with a static IP Address.
  - a. Enable NetCat to listen on port 50000 (`nc -l -p 50000`)
  - b. Verify that the port is listening using `netstat`
6. Configure the other computer with a static DHCP address from the router.
  - a. Enable NetCat to listen on port 50000

- b. Verify that the port is listening using netstat
7. Connect to each other using NetCat, you should now be able to chat to each other.
8. Setup port forwarding on the Router to forward port 50000 on the WAN ip to port 50000 the first computer on the network.
9. Setup port forwarding on the Router to forward port 50001 on the WAN ip to port 50000 the second computer on the network.
10. Verify that the other groups are able to connect to you computer through the router.
11. Use wireshark to look at the traffic between the computers.
  - a. What is the source IP address used from the other groups? Their internal or external IP?