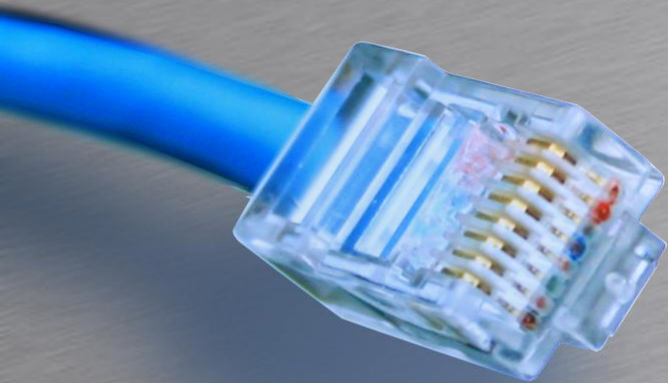


# Virtual Routers



HOUSE OF  
TECHNOLOGY

A row of ten colored circles: blue, purple, green, cyan, green, purple, green, purple, green, blue.

- en del af **mercantec**<sup>+</sup>

## VRF?

Rasmus Elmholt V1.0



# Routing Instances

- Der findes forskellige Routing Instance typer under `edit routing-instances`

```
[edit routing-instances CostumerA]
```

```
root@CPE2# set instance-type ?
```

Possible completions:

<code>forwarding</code>	Forwarding instance
<code>l2vpn</code>	Layer 2 VPN routing instance
<code>no-forwarding</code>	Nonforwarding instance
<code>virtual-router</code>	Virtual routing instance
<code>vpls</code>	VPLS routing instance
<code>vrf</code>	Virtual routing forwarding instance



# Routing Instances

- Eksempel

```
[edit routing-instances CostumerA]
root@CPE2# show
instance-type virtual-router;
interface fe-0/0/5.10;
interface fe-0/0/6.11;
interface lo0.1;
routing-options {
    static route 10.0.0.0/24 next-hop 172.16.4.1;
    router-id 10.0.0.1;
    autonomous-system 65000;
}
protocols {
    bgp {
        group CostumerA {
            neighbor 192.168.0.1;
        }
    }
}
```



# Routing Instances

- Fejlfinding

- Show route table CostumerA.inet.0
- Show interface terse routing-instance