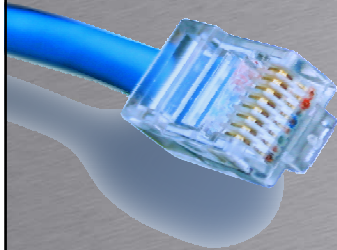


Mirror funktion



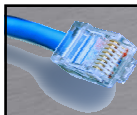
HOUSE OF
TECHNOLOGY



- en del af mercantec⁺

Wireshark

IP telefoni



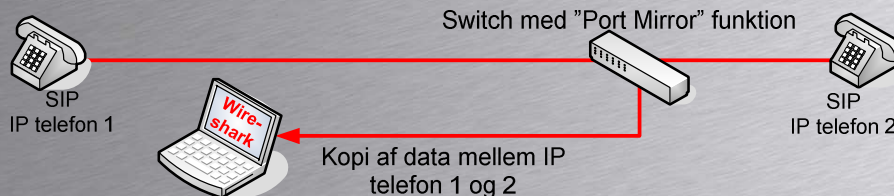
Wireshark

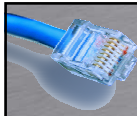
HOUSE OF
TECHNOLOGY



- en del af mercantec⁺

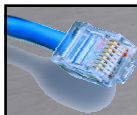
- Gratis netværkssniffer
– www.wireshark.org
- Kan opsamle datapakker der kommer til PC
- Pakker skal derfor hen til PC'en
- Husk PoE funktion eller strøm adapter til telefon





Mirror Funktion

- Der sendes en kopi af trafik på en eller flere porte til en anden port. (Overvågning)
- Ikke fast standard
 - Cisco: Switched Port Analyzer. (SPAN)
 - 3COM: Roving Analysis Port. (RAP)
 - Zyxel: Port Mirroring



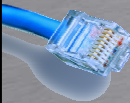
Mirror Funktion

- Eksempel på Port Mirroring på Zyxel
 - Kopier trafik fra port 1,4,5 og 6 til port 3

```
Switch(config)# mirror-port  
Switch(config)# mirror-port 3  
Switch(config)# interface port-channel 1,4-6  
Switch(config-interface)# mirror  
Switch(config-interface)# mirror dir egress
```


- Eksempel på oprettelse af SPAN på Cisco Switch

```
EUC# CONFIGURE TERMINAL  
EUC(config)# MONITOR SESSION 1 SOURCE FASTETHERNET 0/1  
EUC(config)# MONITOR SESSION 1 DESTINATION FASTETHERNET 0/2
```




Network Tap (En anden måde)


HOUSE OF TECHNOLOGY



an M of mercantec®




- Firmaer der laver Network Taps
 - Black box (Copper Tap)
 - Comcraft
 - Datacom Systems
 - Net Optics
 - Network Critical
 - VSS Monitoring




Cisco 7940

HOUSE OF TECHNOLOGY

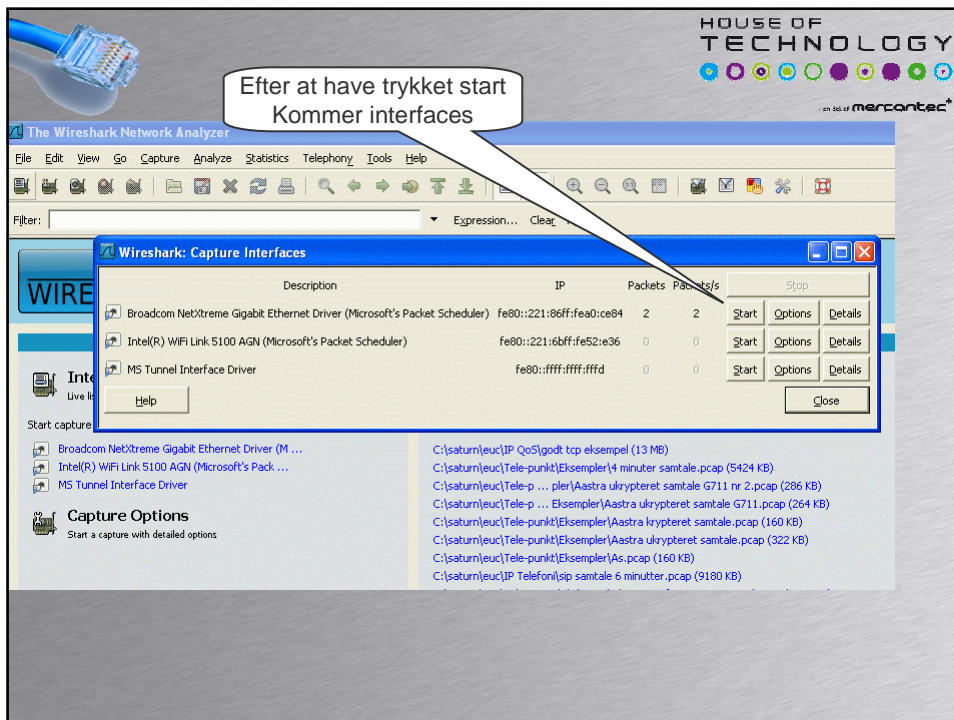
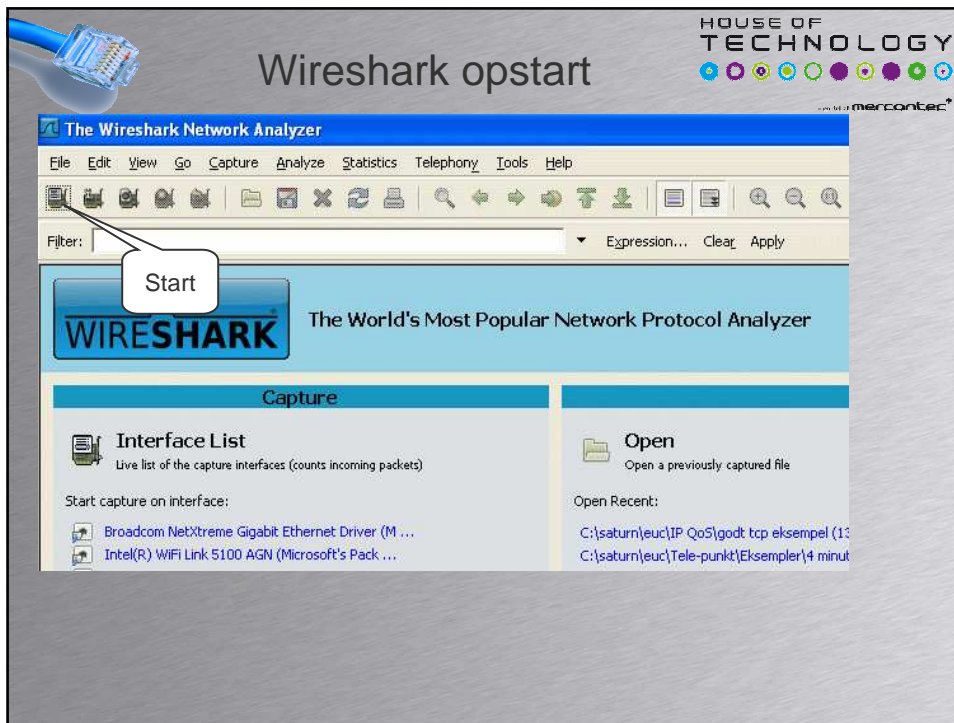


an M of mercantec®

- Port Mirror på telefonen
- 7940 Telefonerne er sat op til at replikere alle pakker ud af PC porten også



Kopi af data sendes til PC



HOUSE OF TECHNOLOGY
by Merconter

Brug Telephony menuen

No.	Time	Source	Destination	Protocol	Info
77	3.479853	192.168.139.31	192.168.139.54	RTP	PT=ITU-
78	3.499383	192.168.139.31	192.168.139.54	RTP	PT=ITU-
83	3.597034	192.168.139.31	192.168.139.54	RTP	PT=ITU-
84	3.620473	192.168.139.31	192.168.139.54	RTP	PT=ITU-
85	3.640012	192.168.139.31	192.168.139.54	RTP	PT=ITU-
86	3.659532	192.168.139.31	192.168.139.54	RTP	PT=ITU-
87	3.679039	192.168.139.31	192.168.139.54	RTP	PT=ITU-
88	3.698580	192.168.139.31	192.168.139.54	RTP	PT=ITU-
89	3.718107	192.168.139.31	192.168.139.54	RTP	PT=ITU-
90	3.737647	192.168.139.31	192.168.139.54	RTP	PT=ITU-
91	3.757159	192.168.139.31	192.168.139.54	RTP	PT=ITU-
92	3.780641	192.168.139.31	192.168.139.54	RTP	PT=ITU-
93	3.800157	192.168.139.31	192.168.139.54	RTP	PT=ITU-
94	3.819684	192.168.139.31	192.168.139.54	RTP	PT=ITU-
95	3.839212	192.168.139.31	192.168.139.54	RTP	PT=ITU-

Husk at decode UDP som RTP!