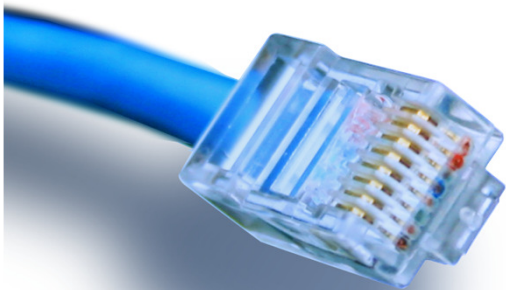


HOUSE OF
TECHNOLOGY



- en del af **mercantec**⁺

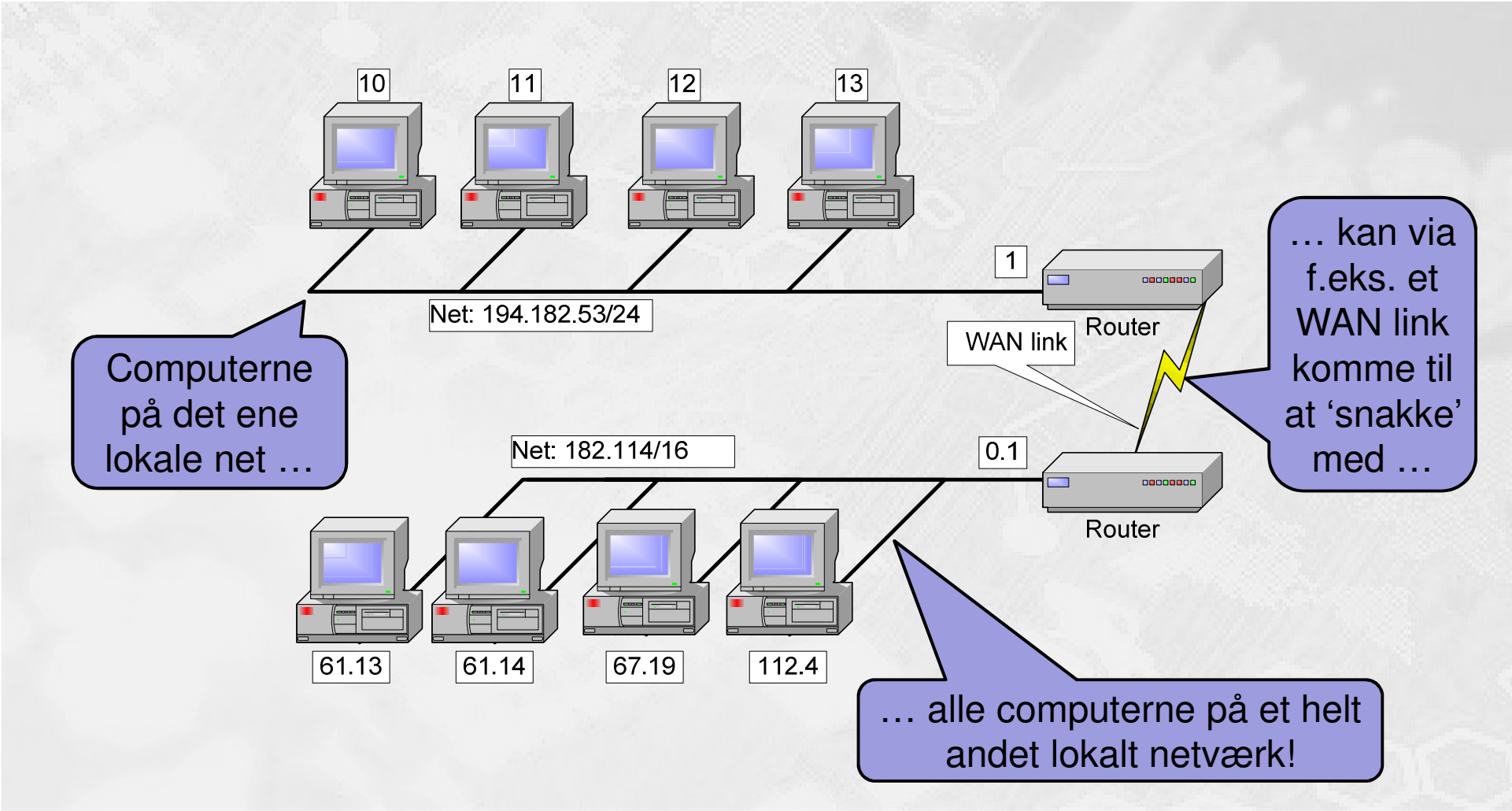


IPv4 routing

- flytning af data-pakker!

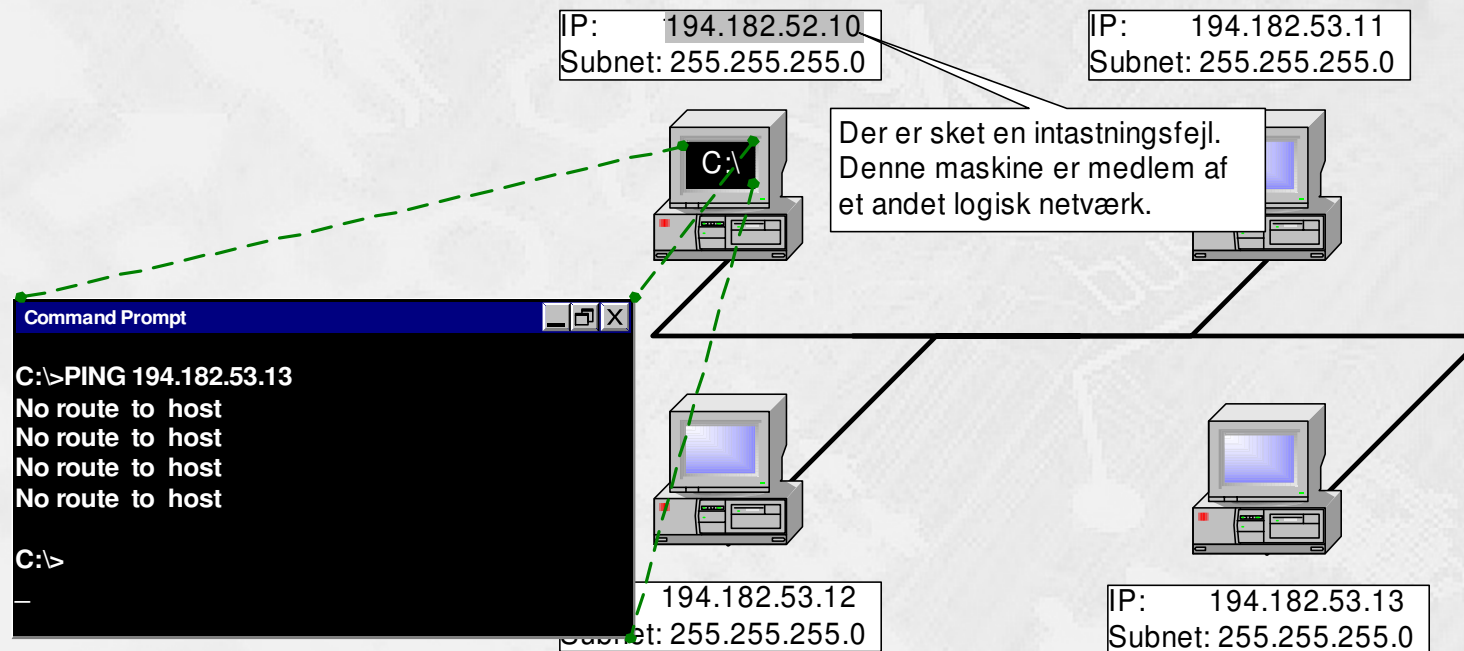
Netteknik 1

IP version 4 routing



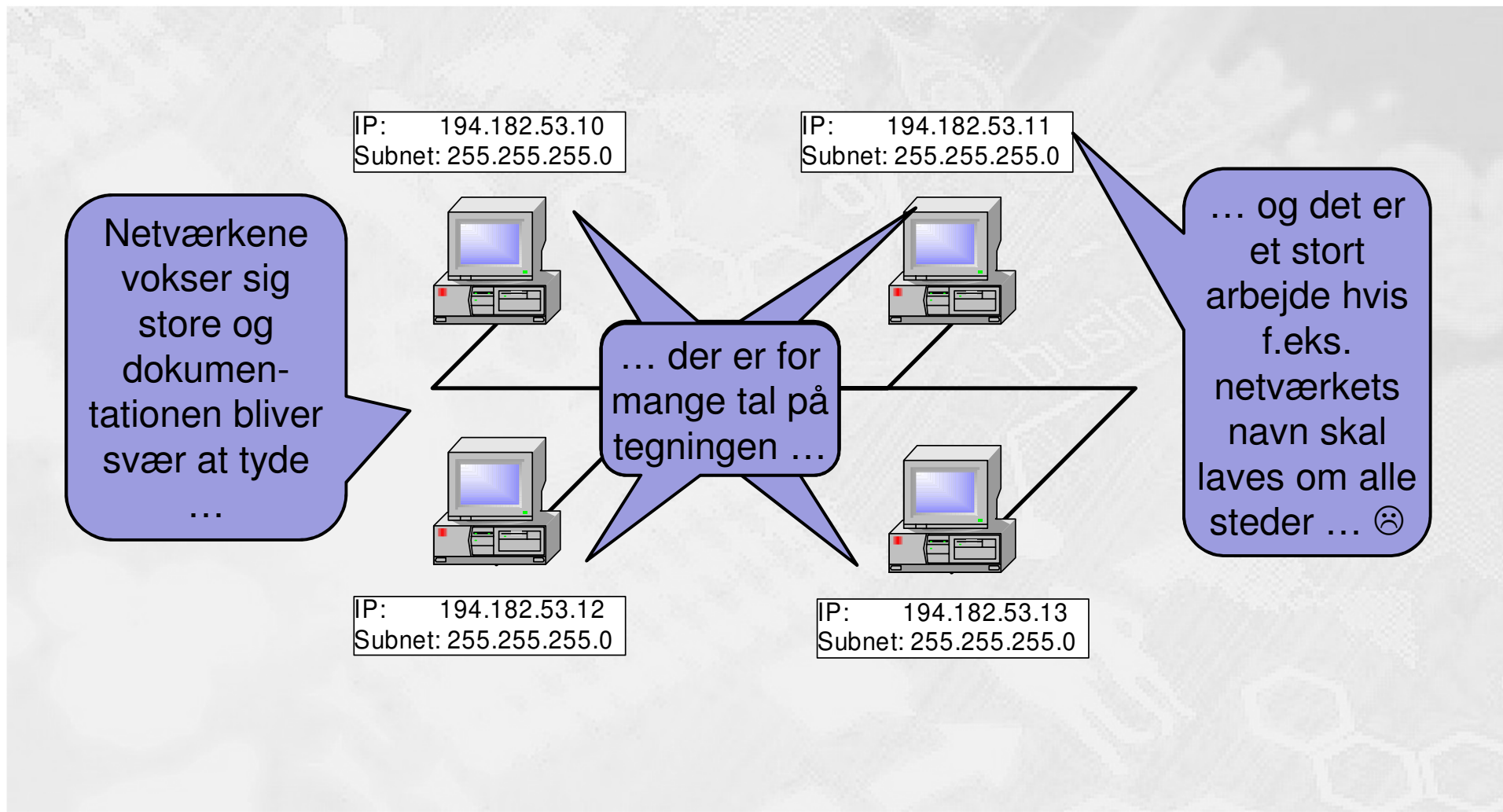
IP kommunikation på lokalnet

- Maskiner på et lokalnetværk skal være medlem af samme IP netværk før de kan kommunikere direkte:

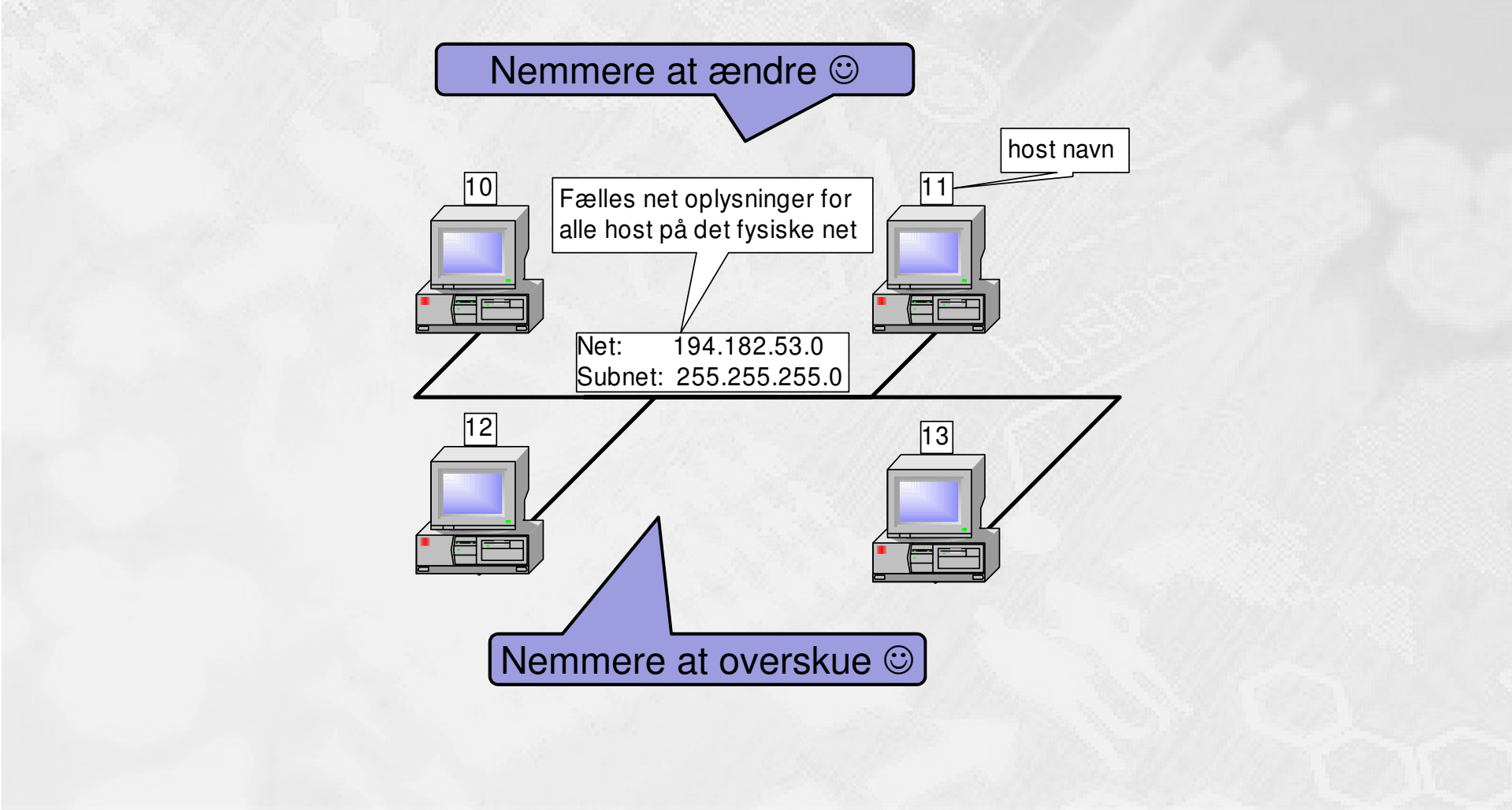


- Bemærk: Logisk netværk = IP netværk

Behov for en ny notationsform



Den nye notationsform



Det bliver "nemmere" endnu

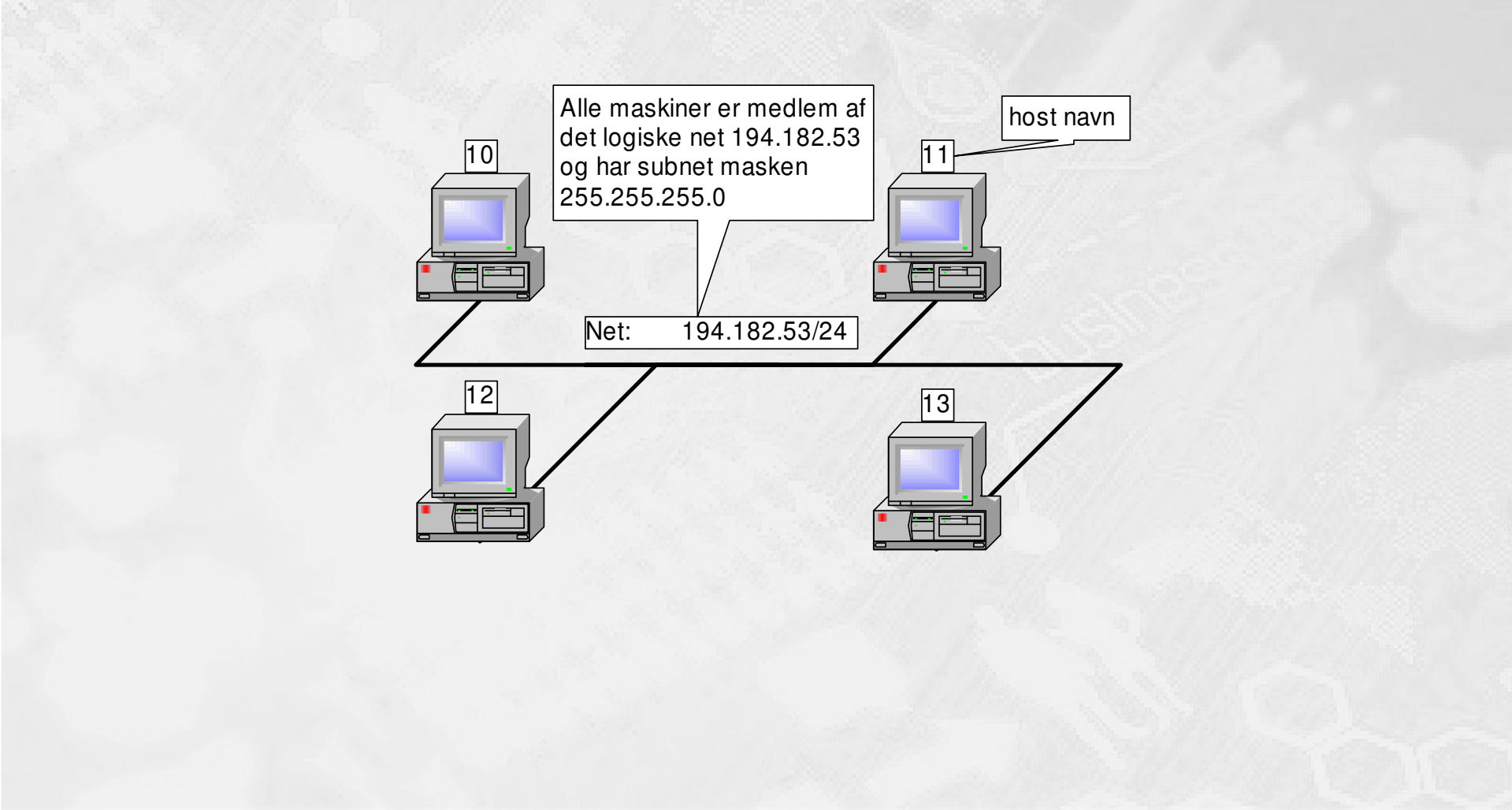
- Subnet masken er på 32 bit
 - for eksempel 255.255.255.0
 - 11111111.11111111.11111111.00000000
 - De første 24 bit er 1'taller

Net: 194.182.53.0
Maske: 255.255.255.0

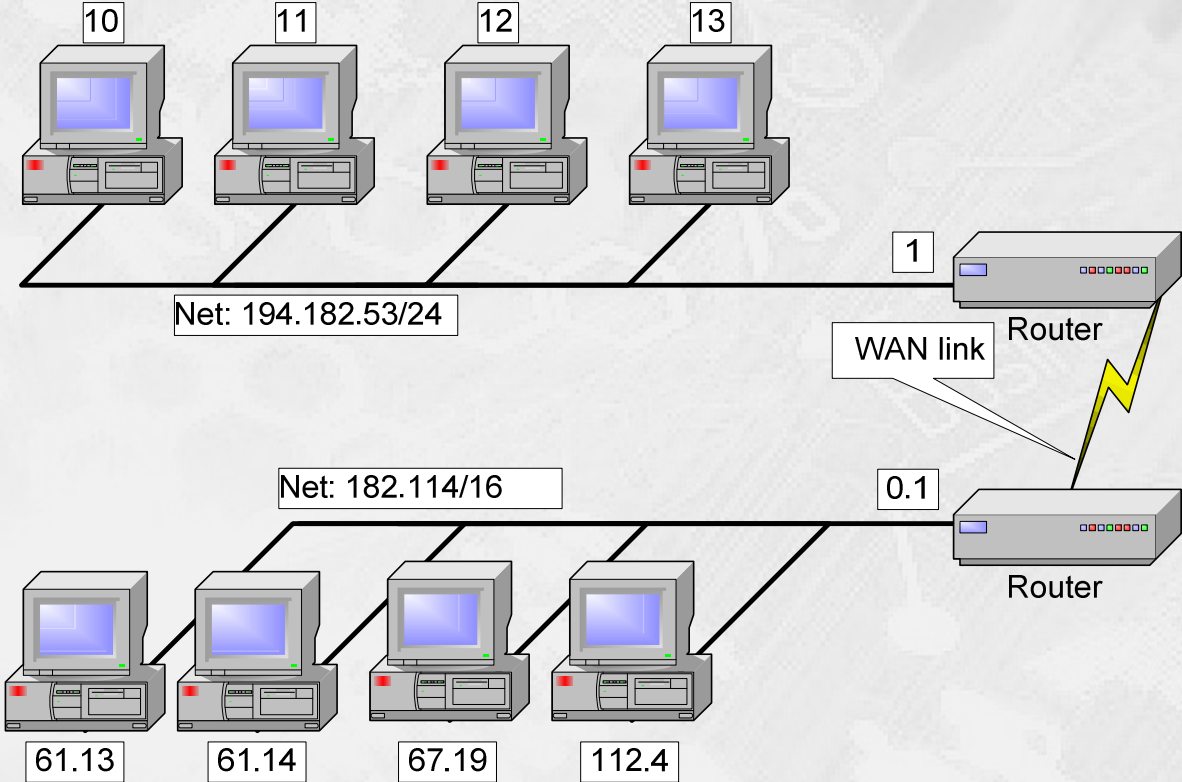
=

194.182.53/24

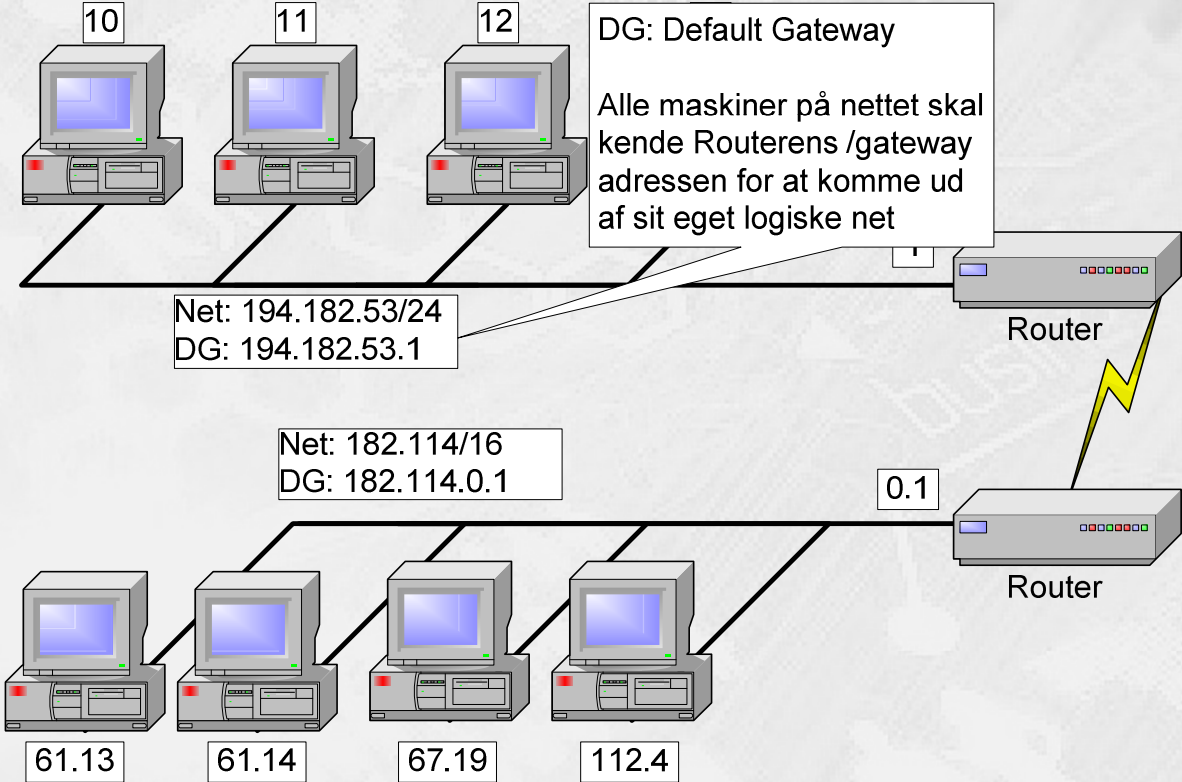
Den nye metode



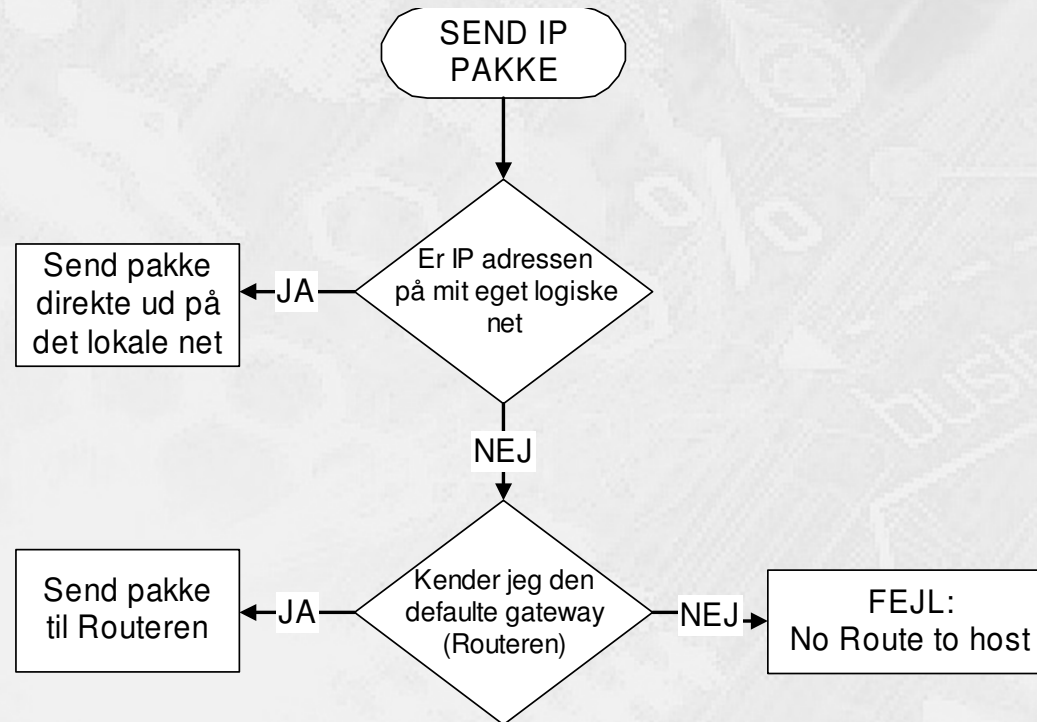
Flere net kobles sammen



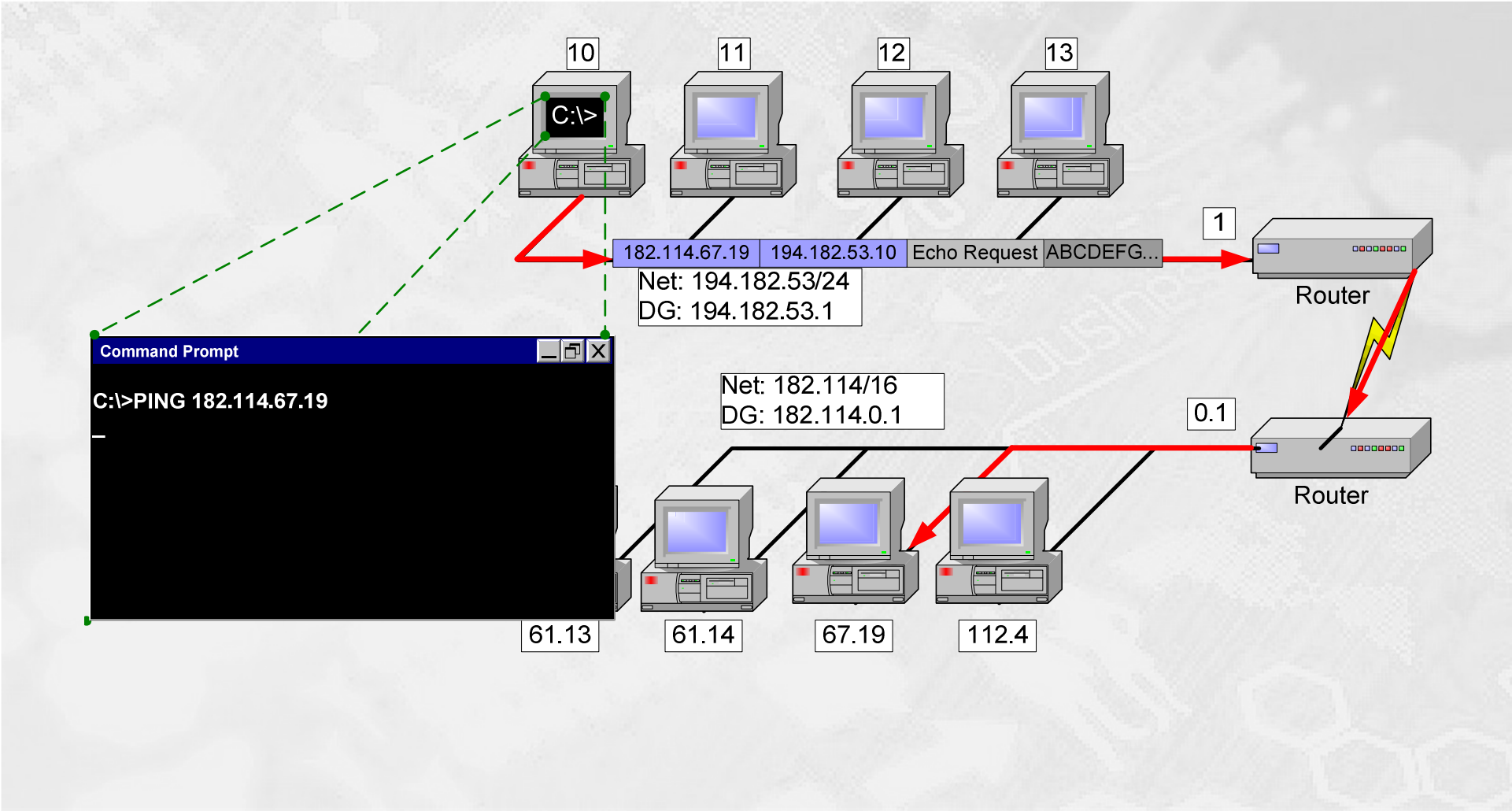
Host skal kende Routeren



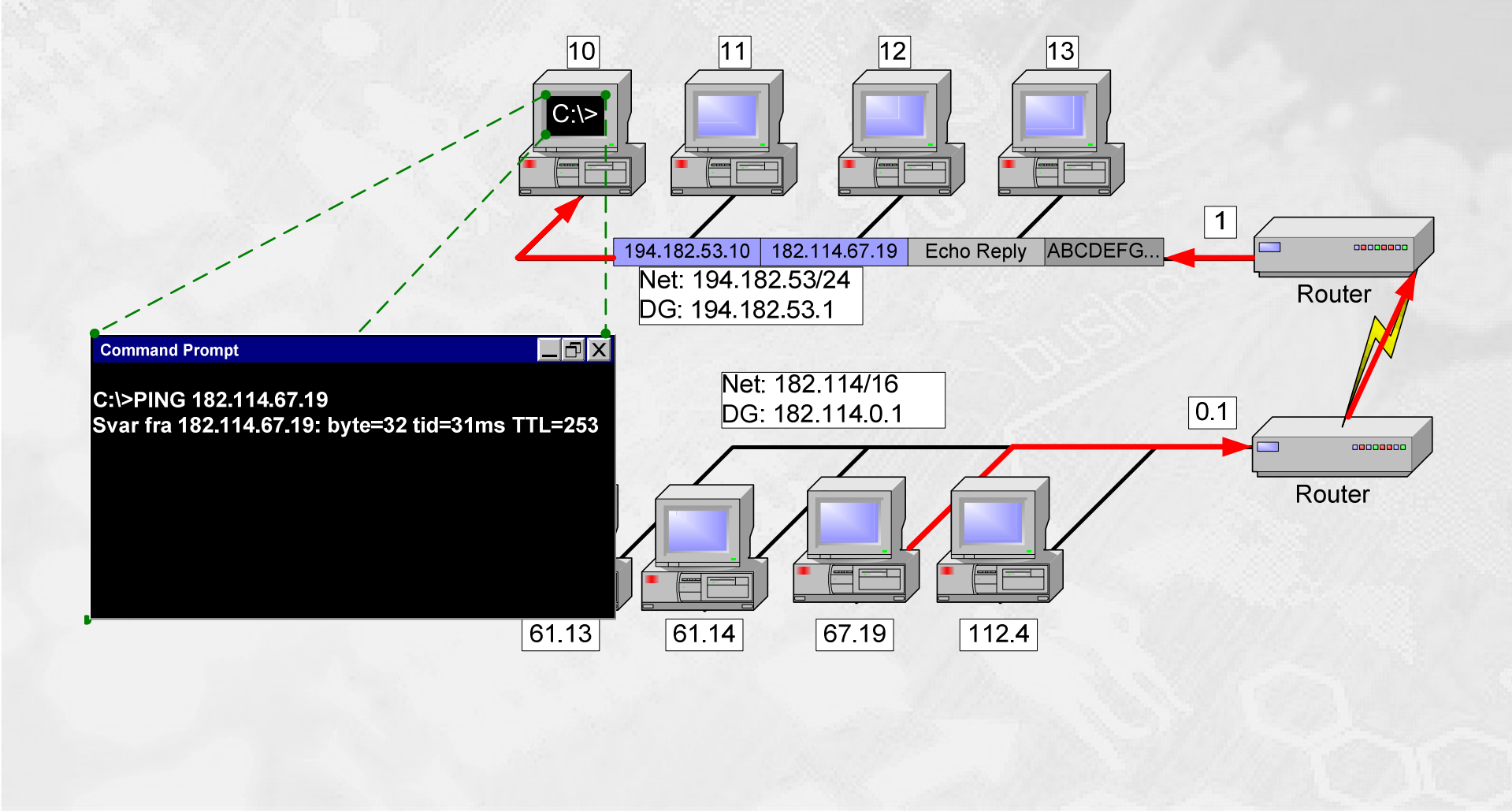
Hvad host "tænker"



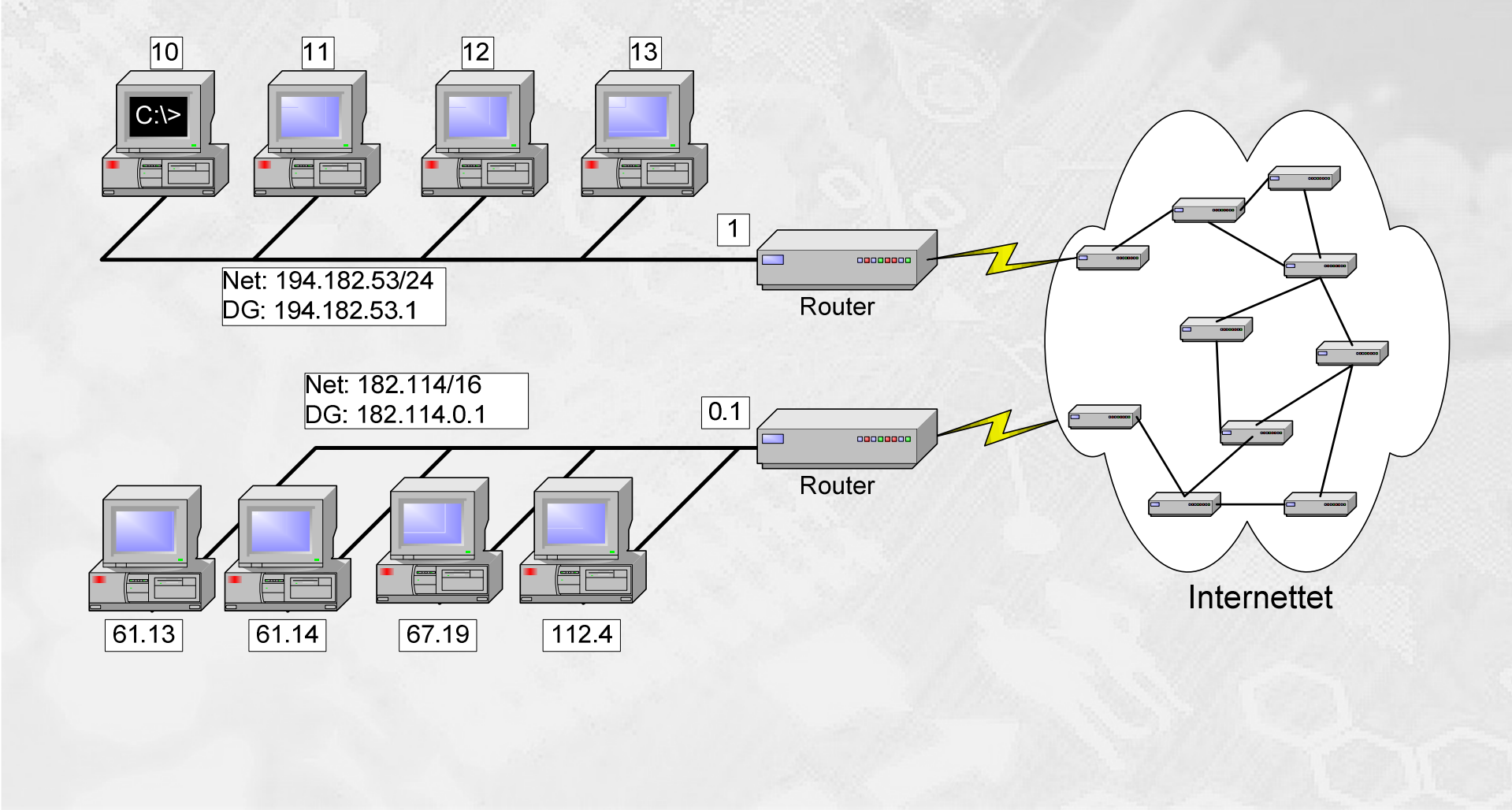
Internet working



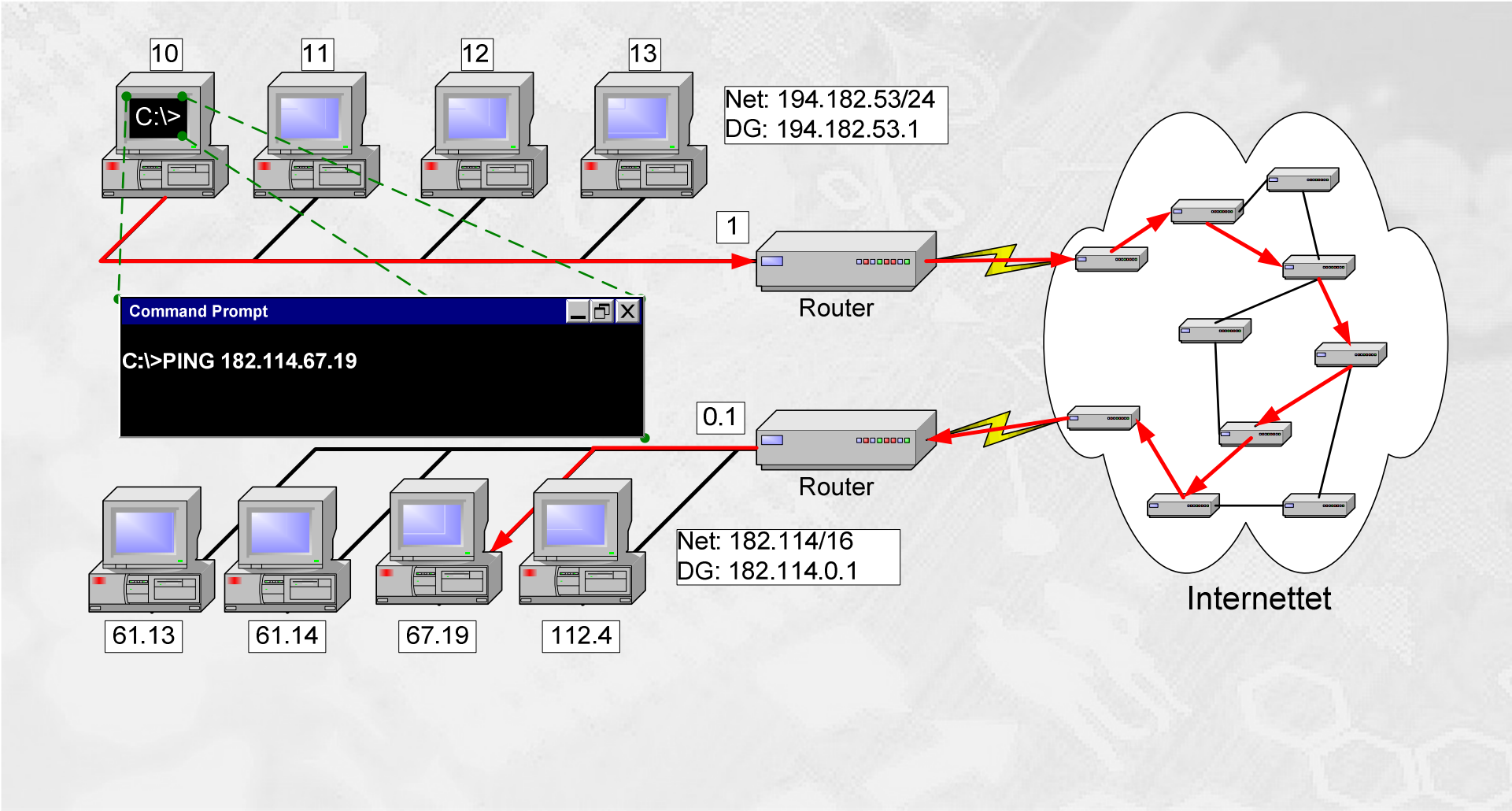
Nu er der "hul" igennem



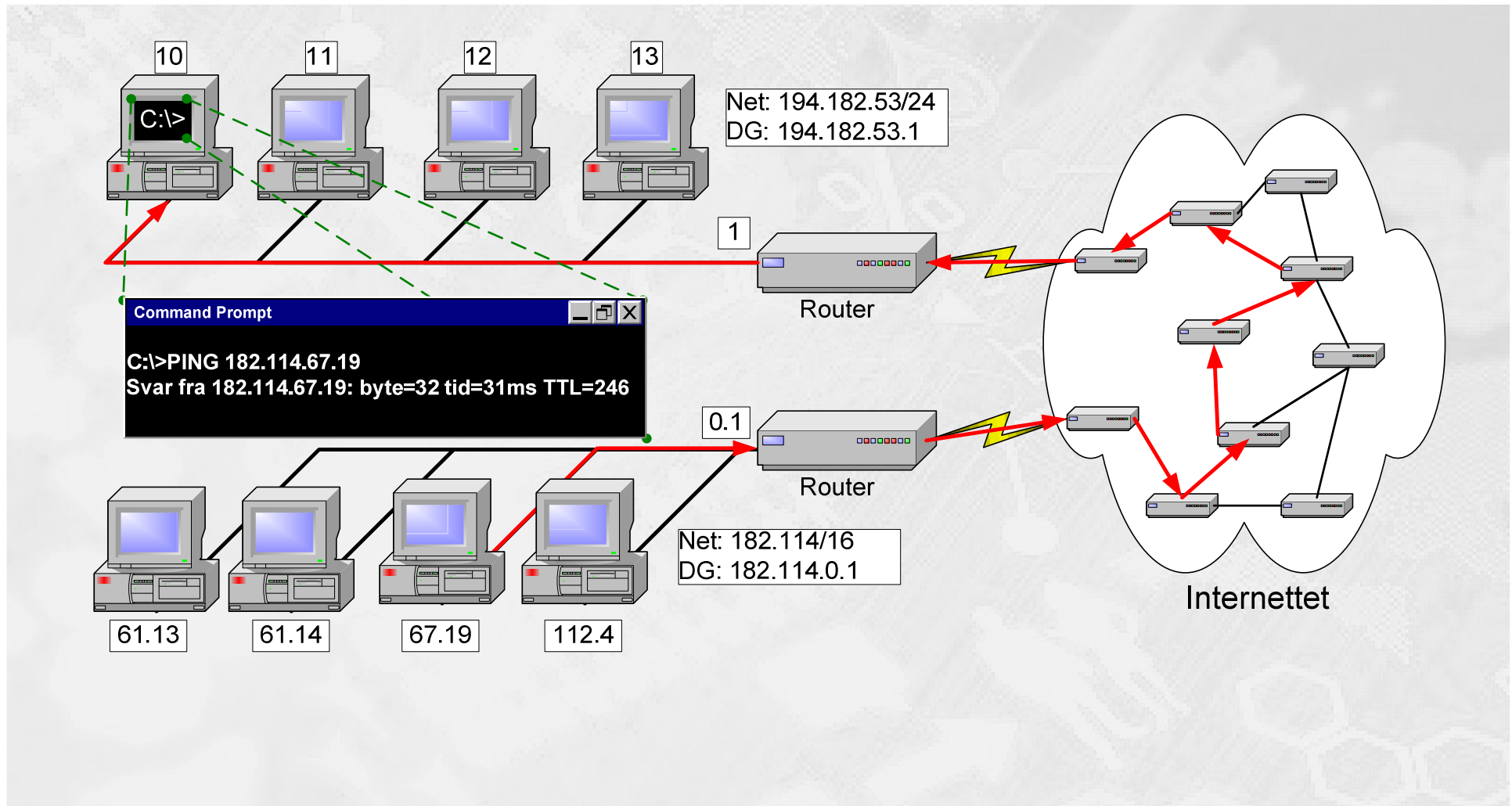
Internettet består af mange routere



Routerne kender hinanden



Der er flere alternative ruter



- En host kan sende direkte til andre host på sit eget logiske net.
- For at sende til host på andre logiske net skal hosten kende en rute ud af nettet
- 172.16/16 er et klasse B net
 - Net navn: 172.16.0.0
 - Subnet mask: 255.255.0.0