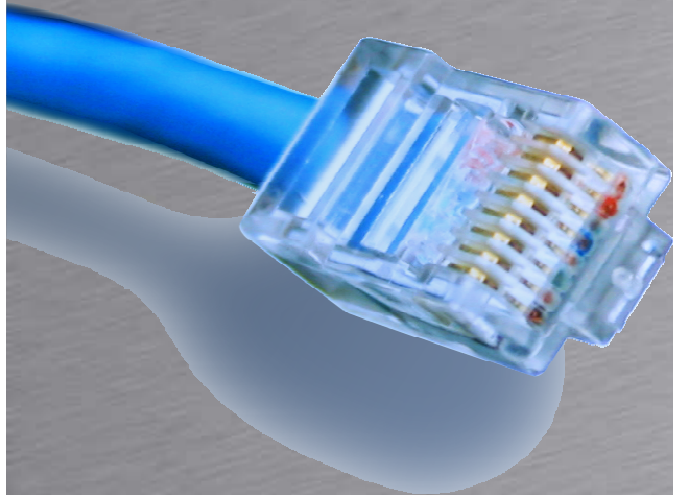


RPM



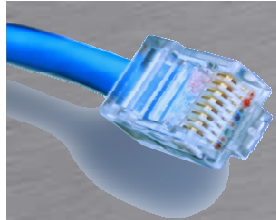
HOUSE OF
TECHNOLOGY



- en del af **mercantec⁺**

Real-Time Performance Monitoring

Rasmus Elmholt V1.0



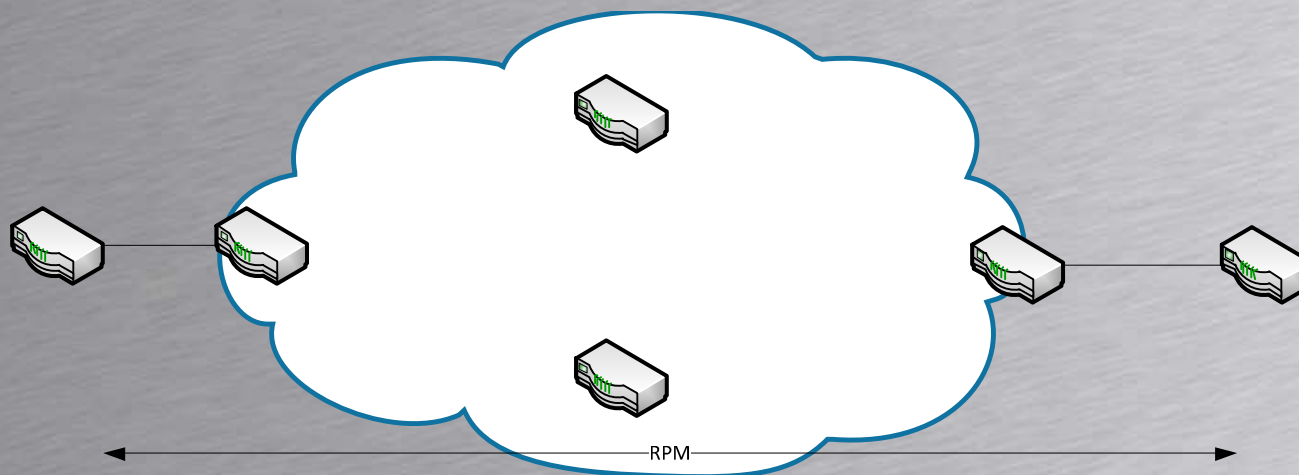
RPM

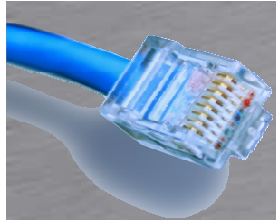
HOUSE OF
TECHNOLOGY



... an dahl of mercontec⁺

- RPM bruges til at måle latency i netværk
 - Virker mellem 2 enheder der kører JunOS(UDP & TCP Ping)
 - Routerne generer periodiske probes
 - Timestamper alle beskeder for at måle RTT



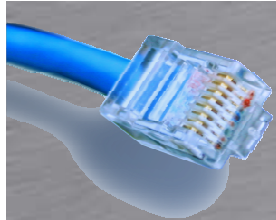


RPM

- Eksempel

```
[edit services rpm]
root@SRX210# show
probe CPE1 {
    test PING-TEST-CPE1 {
        probe-type icmp-ping-timestamp;
        target address 10.0.0.1;
        probe-count 10;
        probe-interval 1;
        test-interval 60;
    }
}
```

- Show service rpm probe-results



RPM

- Opgaver
 - Alle CPE Routerne skal have udp-ping-timestamp til alle andre CPE Routerne
 - Aftal selv UDP port osv.
 - Alle CPE Routerne skal have ping-timestamp mode deres P Router
 - Alle P Routerne skal lave ping-timestamp til deres CPE Router
 - Alle P Routerne skal lave udp-ping-timestamp til de andre P Routerne