

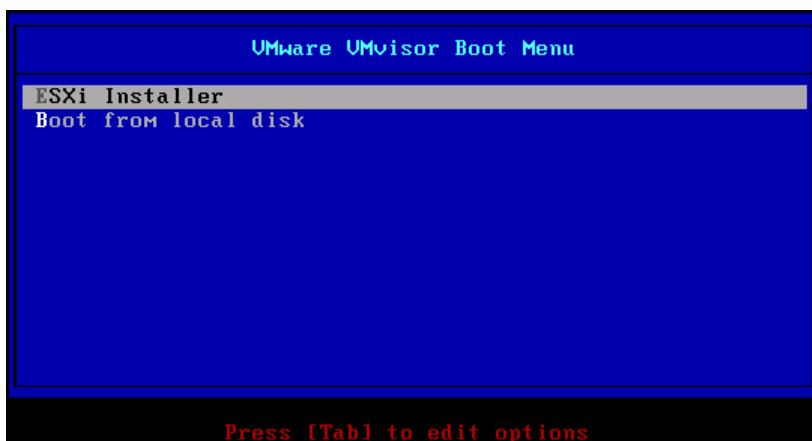
Contents

ESXi installation og basisk konfiguration	1
Opsætning af ESXi virtuelle netværk	7
Vælge netværk som et GuestOS skal tilsluttes	9
Installation af virtuelle maskiner	11
Arbejde med Guest OS	15

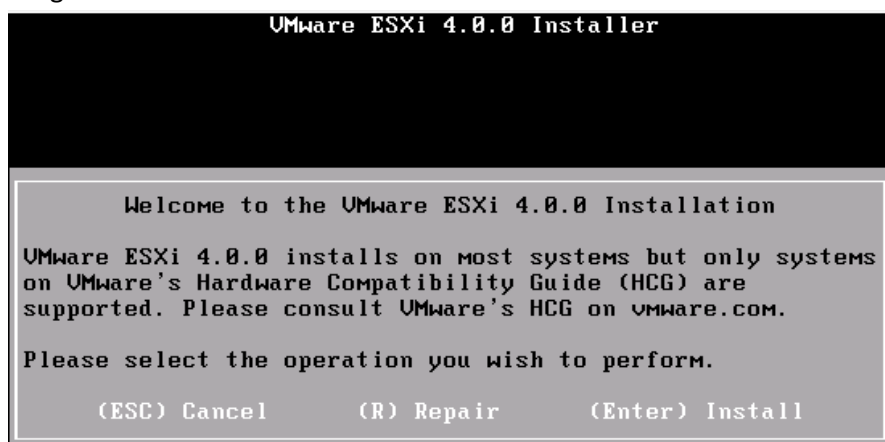
ESXi installation og basisk konfiguration

- Kræver to fysiske diske, kan med fordel anvende en USB flashdrive som det ene.
- Kræver 2GB RAM.

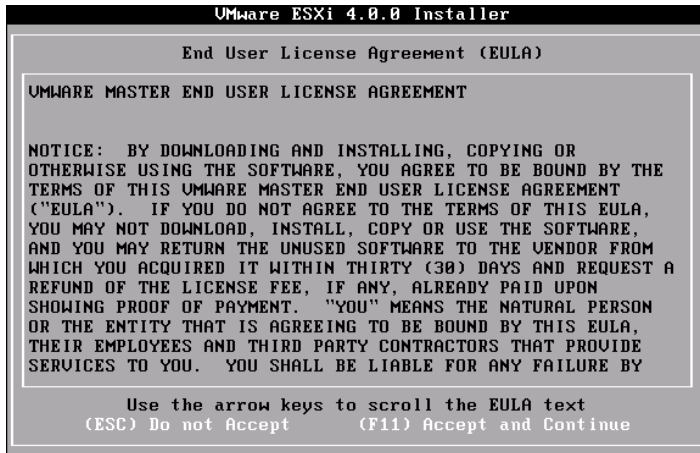
1. Boot fra CD



2. Vælg "ESXi Installer"



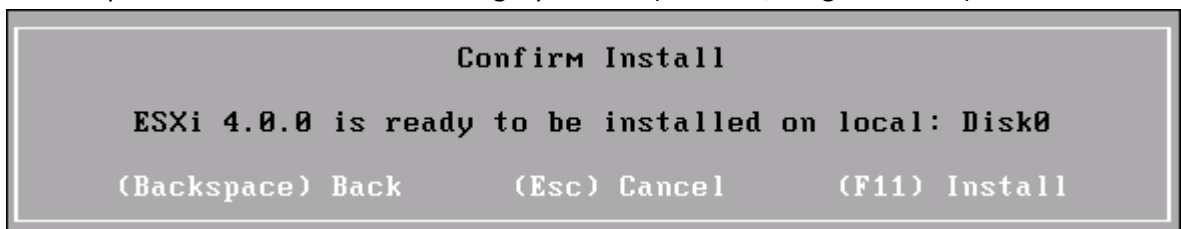
3. Tryk ENTER for "Install"



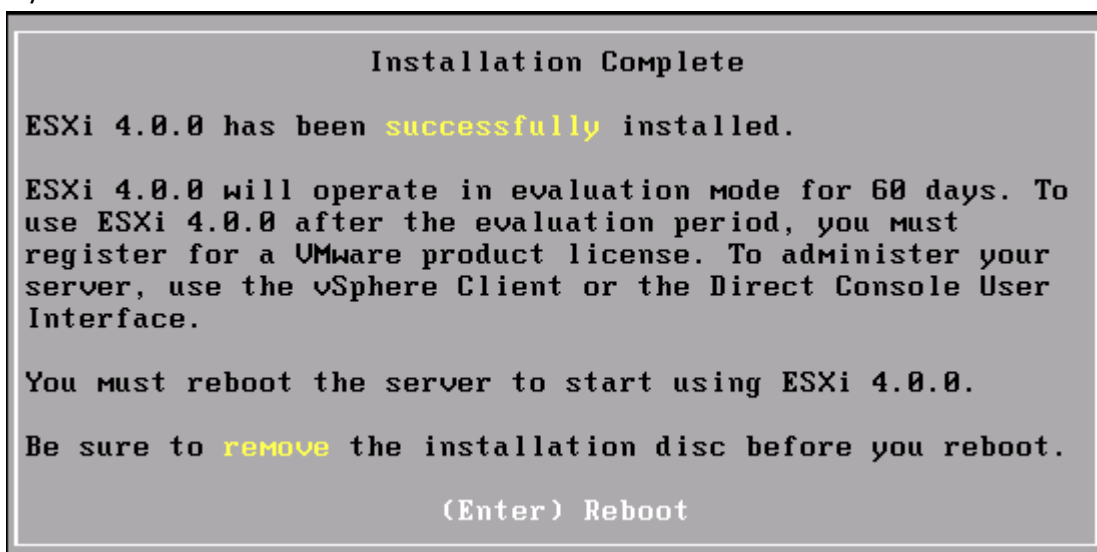
4. Tryk F11 "Accept and Continue"

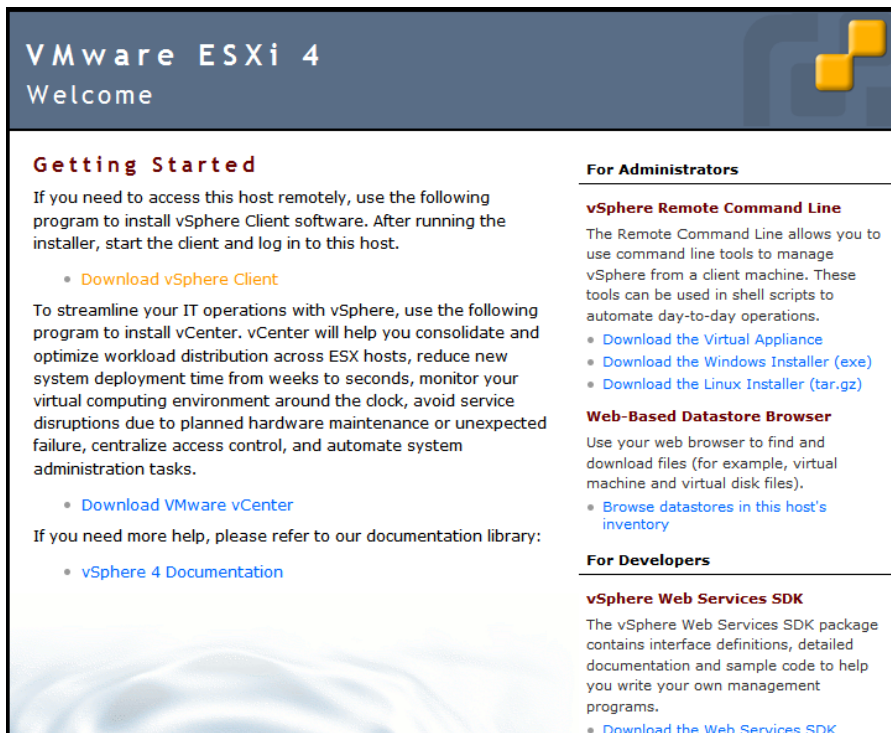


5. Marker fysisk disk til ESXi installationen og tryk ENTER (Hvis USB, vælg denne her)



6. Tryk F11 "Install"





VMware ESXi 4
Welcome

Getting Started

If you need to access this host remotely, use the following program to install vSphere Client software. After running the installer, start the client and log in to this host.

- [Download vSphere Client](#)

To streamline your IT operations with vSphere, use the following program to install vCenter. vCenter will help you consolidate and optimize workload distribution across ESX hosts, reduce new system deployment time from weeks to seconds, monitor your virtual computing environment around the clock, avoid service disruptions due to planned hardware maintenance or unexpected failure, centralize access control, and automate system administration tasks.

- [Download VMware vCenter](#)

If you need more help, please refer to our documentation library:

- [vSphere 4 Documentation](#)

For Administrators

vSphere Remote Command Line

The Remote Command Line allows you to use command line tools to manage vSphere from a client machine. These tools can be used in shell scripts to automate day-to-day operations.

- [Download the Virtual Appliance](#)
- [Download the Windows Installer \(exe\)](#)
- [Download the Linux Installer \(tar.gz\)](#)

Web-Based Datastore Browser

Use your web browser to find and download files (for example, virtual machine and virtual disk files).

- [Browse datastores in this host's inventory](#)

For Developers

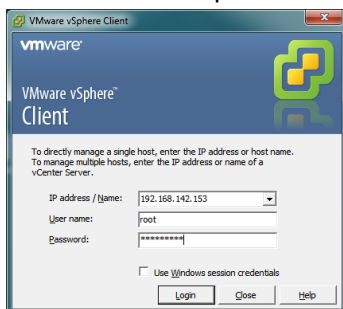
vSphere Web Services SDK

The vSphere Web Services SDK package contains interface definitions, detailed documentation and sample code to help you write your own management programs.

- [Download the Web Services SDK](#)

13. Vælg "Download vSphere Client" og installer denne.

14. Start "VMware vSphere Client" (Genvej på skrivebord)

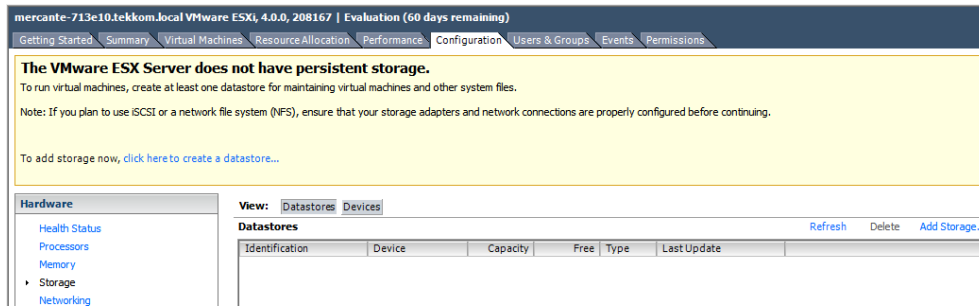


15. Udfyld IP på ESXi serveren, user name "root", password og klik "Login"

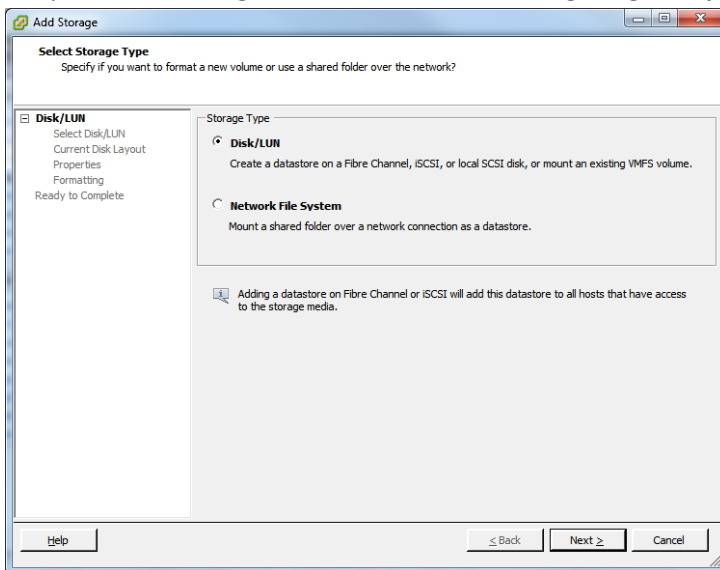


16. Sæt fluebenet og tryk på "Ignore" (Ved licensmeddelelse klik OK)

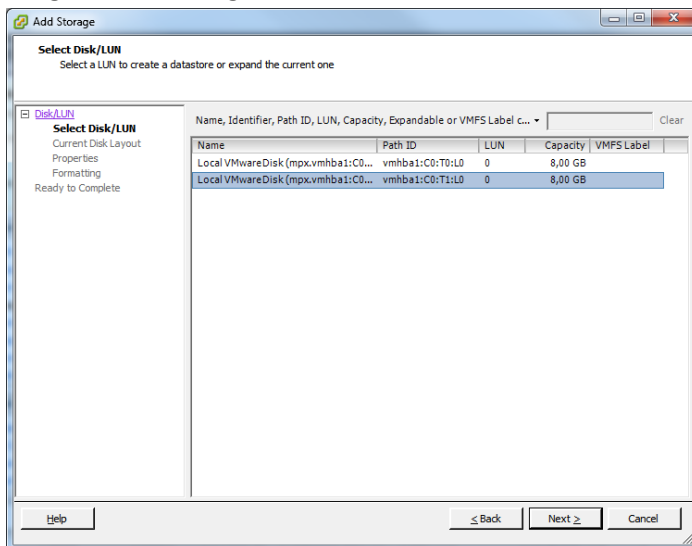
17. Ved brug af USB disk laver VMWare ikke selv en Datastore. Denne oprettes manuelt.



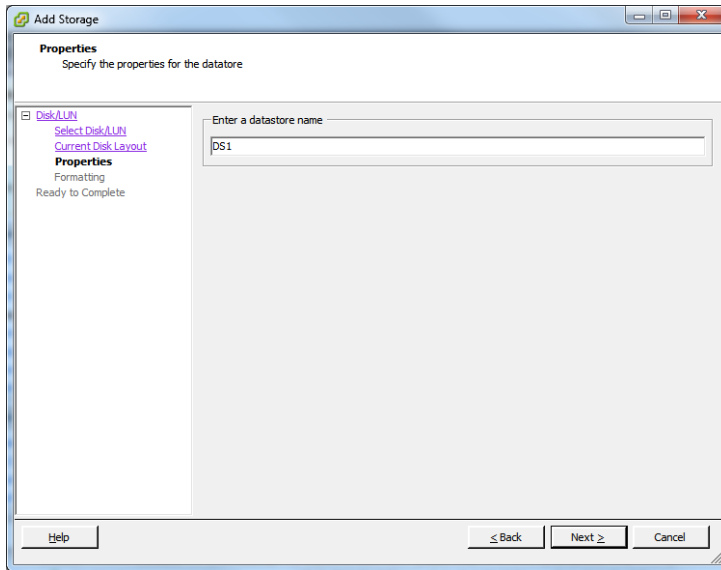
Klik på fanen "Configuration", til venstre "Storage" og til højre "Add Storage"



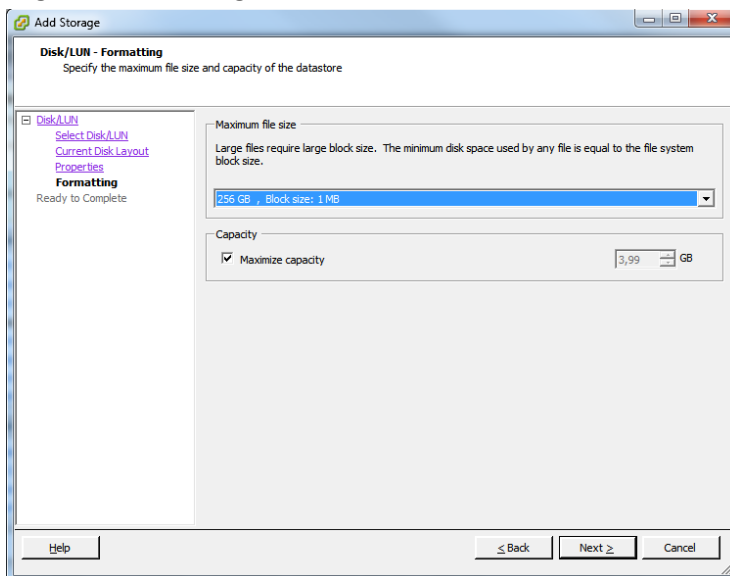
18. Vælg "Disk/LUN" og klik "Next"



19. Marker den fysiske harddisk og klik NEXT 2 gange.



20. Angiv navn "DS1" og NEXT

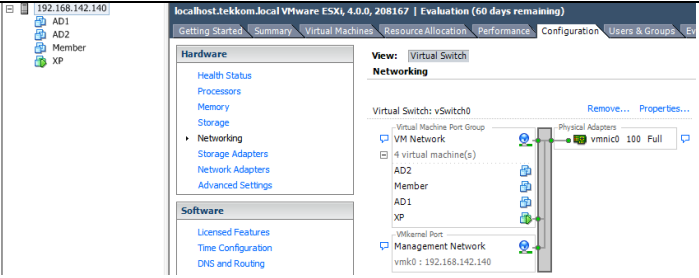
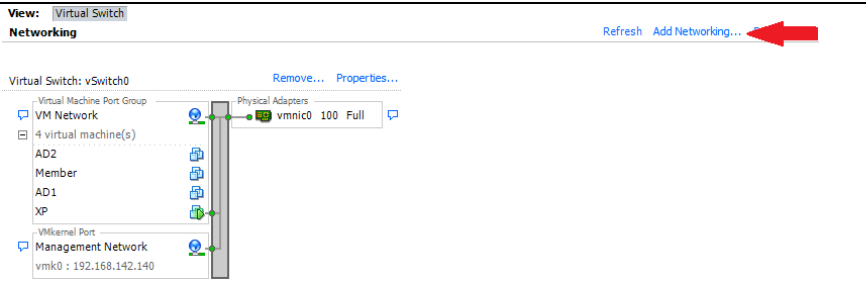
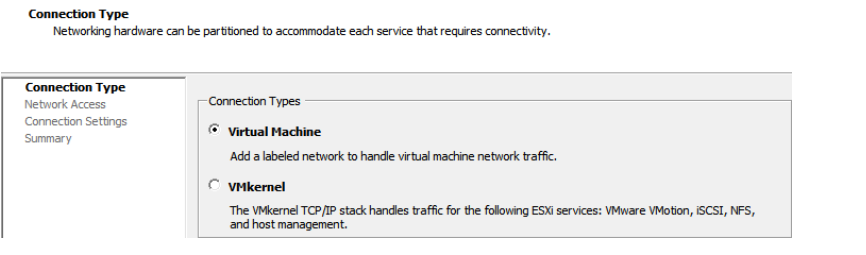
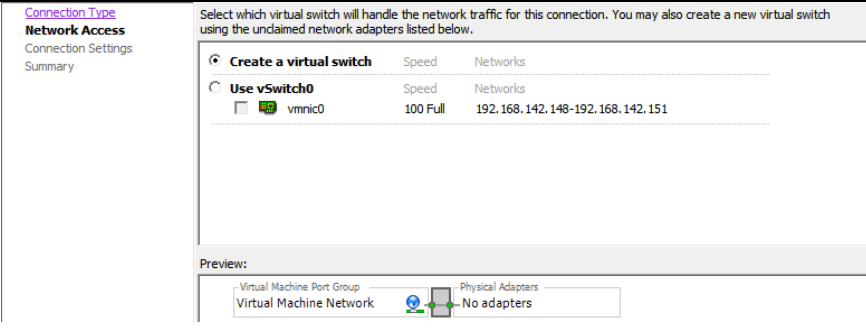


21. NEXT og FINISH

Opsætning af ESXi virtuelle netværk

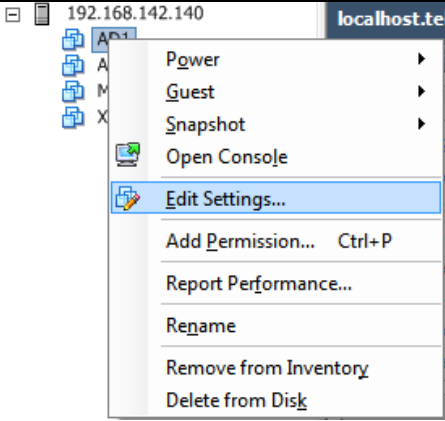
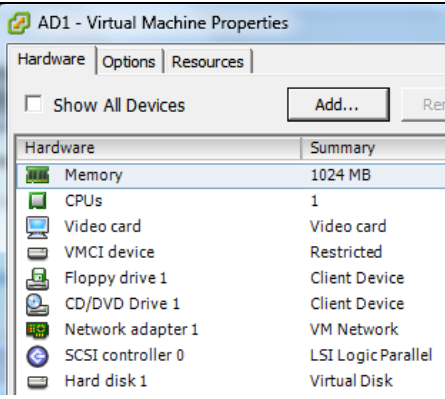
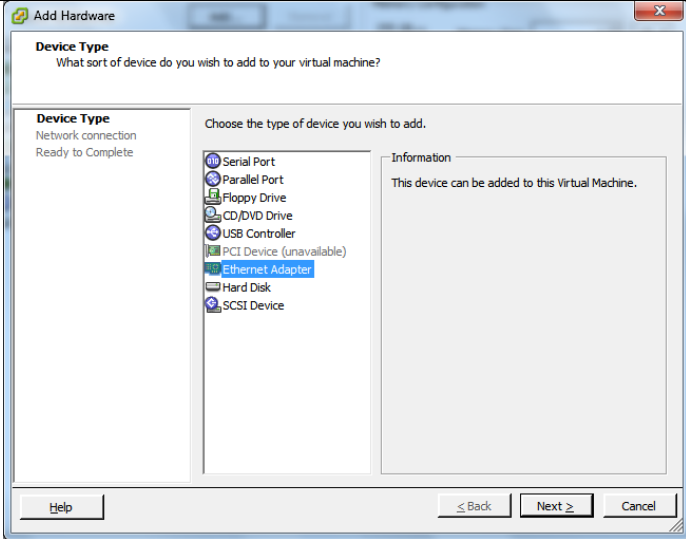
ESXi er konfigureret med ét netværk default "VM Network" som er eksternt og bridget med det fysiske netværk, som ESXi serveren er tilsluttet.

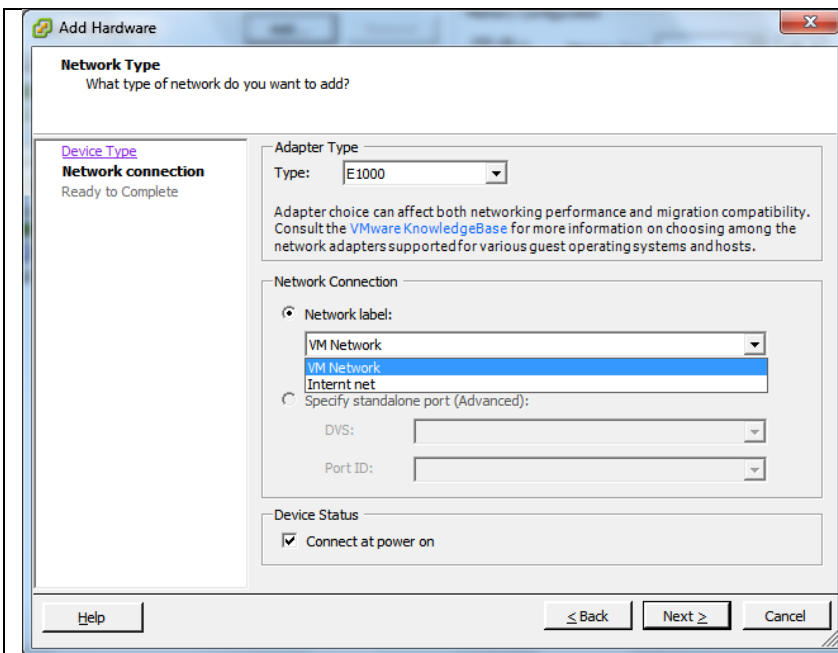
Følgende beskriver hvordan man opretter et internt netværk, som kun de virtuelle maskiner kan kommunikere på.

	<p>Marker øverst i træstrukturen, og klik på fanen "Configuration" og til venstre på "Networking"</p>
	<p>Klik på "Add networking"</p>
	<p>"Virtual Machine" og knappen "Next"</p>
	<p>"Create a virtual switch" og "Next"</p>

<p> Connection Type Network Access Connection Settings Summary </p>	<p>Port Group Properties</p> <p>Network Label: <input type="text" value="Internt net"/></p> <p>VLAN ID (Optional): <input type="text"/></p> <hr/> <p>Preview:</p> <p>Virtual Machine Port Group: Internt net</p> <p>Physical Adapters: No adapters</p>	<p>Kald f.eks. nettet for "Internt net"</p> <p>"Next"</p> <p>Kig på summary og afslut med "Finish"</p>
<p>Virtual Switch: vSwitch0 Remove... Properties...</p> <p>Virtual Machine Port Group: VM Network</p> <p>4 virtual machine(s)</p> <ul style="list-style-type: none"> AD2 Member AD1 XP <p>VMkernel Port: Management Network vmk0 : 192.168.142.140</p> <p>Physical Adapters: vmnic0 100 Full</p> <hr/> <p>Virtual Switch: vSwitch1 Remove... Properties...</p> <p>Virtual Machine Port Group: Internt net</p> <p>Physical Adapters: No adapters</p>		<p>Sådan ser konfigurationen nu ud.</p>

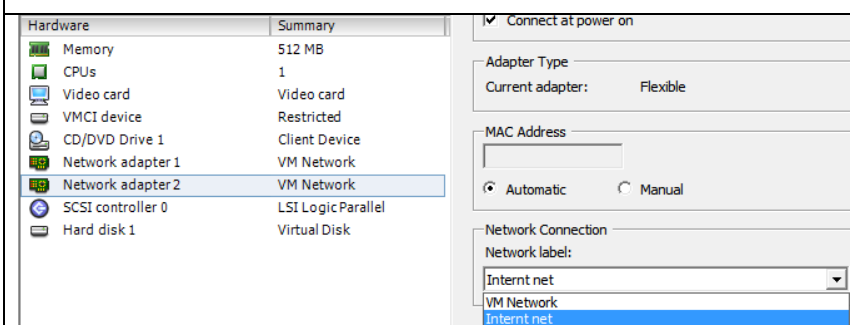
Vælg netværk som et GuestOS skal tilsluttes

 <p>A screenshot of a virtual machine management interface. The address bar shows '192.168.142.140' and 'localhost.te'. A tree view on the left shows a folder named 'AD1'. A context menu is open over 'AD1', listing options: Power, Guest, Snapshot, Open Console, Edit Settings... (highlighted), Add Permission... Ctrl+P, Report Performance..., Rename, Remove from Inventory, and Delete from Disk.</p>	<p>Her vil vi have maskinen "AD1" tilsluttet både til det eksterne og det interne netværk.</p> <p>Højreklik på maskinen og vælg "Edit Settings"</p>																				
 <p>A screenshot of the 'AD1 - Virtual Machine Properties' window. The 'Hardware' tab is selected. There is a 'Show All Devices' checkbox and an 'Add...' button. A table lists hardware components:</p> <table border="1"><thead><tr><th>Hardware</th><th>Summary</th></tr></thead><tbody><tr><td>Memory</td><td>1024 MB</td></tr><tr><td>CPUs</td><td>1</td></tr><tr><td>Video card</td><td>Video card</td></tr><tr><td>VMCI device</td><td>Restricted</td></tr><tr><td>Floppy drive 1</td><td>Client Device</td></tr><tr><td>CD/DVD Drive 1</td><td>Client Device</td></tr><tr><td>Network adapter 1</td><td>VM Network</td></tr><tr><td>SCSI controller 0</td><td>LSI Logic Parallel</td></tr><tr><td>Hard disk 1</td><td>Virtual Disk</td></tr></tbody></table>	Hardware	Summary	Memory	1024 MB	CPUs	1	Video card	Video card	VMCI device	Restricted	Floppy drive 1	Client Device	CD/DVD Drive 1	Client Device	Network adapter 1	VM Network	SCSI controller 0	LSI Logic Parallel	Hard disk 1	Virtual Disk	<p>Har maskinen kun ét netkort, skal vi tilføje en mere.</p> <p>Klik på knappen "add"</p>
Hardware	Summary																				
Memory	1024 MB																				
CPUs	1																				
Video card	Video card																				
VMCI device	Restricted																				
Floppy drive 1	Client Device																				
CD/DVD Drive 1	Client Device																				
Network adapter 1	VM Network																				
SCSI controller 0	LSI Logic Parallel																				
Hard disk 1	Virtual Disk																				
 <p>A screenshot of the 'Add Hardware' dialog box. The 'Device Type' is 'Network connection'. The question is 'What sort of device do you wish to add to your virtual machine?'. A list of device types is shown, with 'Ethernet Adapter' selected. An 'Information' box states 'This device can be added to this Virtual Machine.' Buttons for 'Help', '< Back', 'Next >', and 'Cancel' are at the bottom.</p>	<p>Vælg "Ethernet Adapter" og "Next"</p>																				



Vælg evt. her et af netværkene, som maskinen skal være tilsluttet. (Ellers bare next, kommer længere nede)

Next og finish



Højreklik på den virtuelle maskine igen og vælg "Edit Settings"

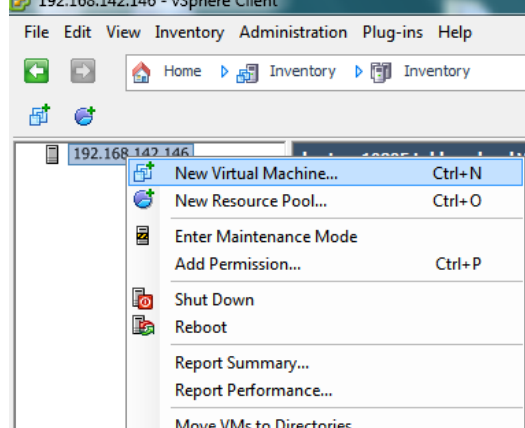
Marker først den ene network adapter og vælg en af de to network connections.

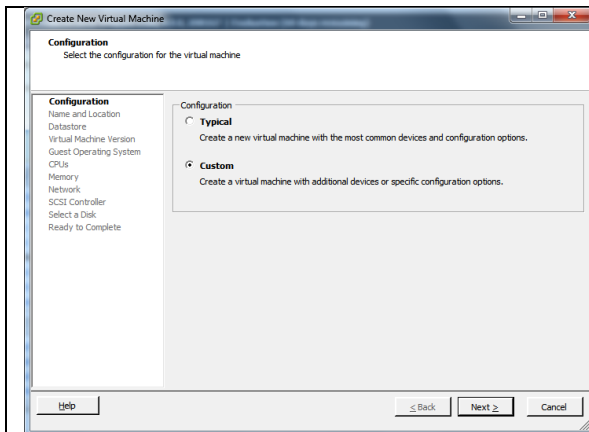
Derefter den anden network adapter med den anden network connection.

Gøres for hver virtuelle maskine, til alle er tilsluttet det korrekte netværk.

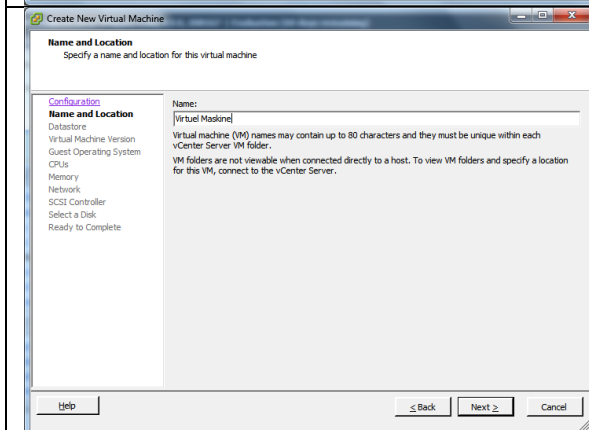
<p>View: Virtual Switch</p> <p>Networking</p> <p>Virtual Switch: vSwitch0 Remove... Properties...</p> <p>Virtual Machine Port Group</p> <ul style="list-style-type: none"> VM Network Physical Adapters: vmnic0 100 Full 1 virtual machine(s) <ul style="list-style-type: none"> AD1 VMkernel Port <ul style="list-style-type: none"> Management Network vmk0 : 192.168.142.140 <p>Virtual Switch: vSwitch1 Remove... Properties...</p> <p>Virtual Machine Port Group</p> <ul style="list-style-type: none"> Internt net Physical Adapters: No adapters 4 virtual machine(s) <ul style="list-style-type: none"> AD2 Member AD1 XP 	<p>Eksemplet her viser et virtuelt miljø på en ESXi server.</p> <p>AD1 er tilsluttet to netværk "VM Network" og "Internt net"</p> <p>Resterende maskiner er tilsluttet "Internt net"</p> <p>"vSwitch0" er forbundet til ESXi serverens fysiske netkort med "VM Network" netværket (forbindelsen er bridged)</p> <p>"vSwitch1" er ikke tilsluttet nogle fysiske netkort, men alle virtuelle maskiner kan kommunikere gennem, hvis de er forbundet til "Internt net" netværket.</p>
---	---

Installation af virtuelle maskiner

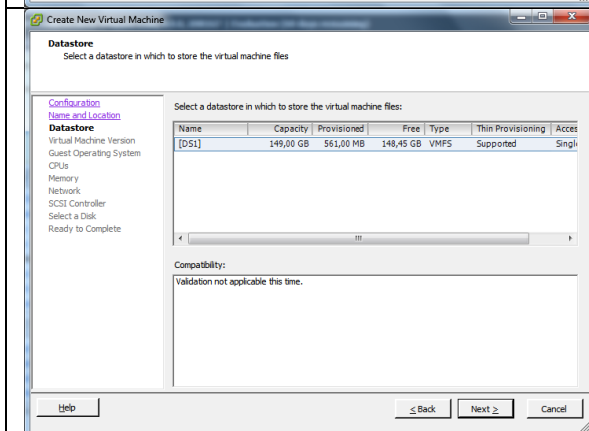
 <p>192.168.142.146 - vSphere Client</p> <p>File Edit View Inventory Administration Plug-ins Help</p> <p>Home > Inventory > Inventory</p> <ul style="list-style-type: none"> New Virtual Machine... (Ctrl+N) New Resource Pool... (Ctrl+O) Enter Maintenance Mode Add Permission... (Ctrl+P) Shut Down Reboot Report Summary... Report Performance... Move VMs to Directories 	<p>Højreklik i "root" i VMware vSphere klienten og vælg "New Virtual Machine"</p>
---	---



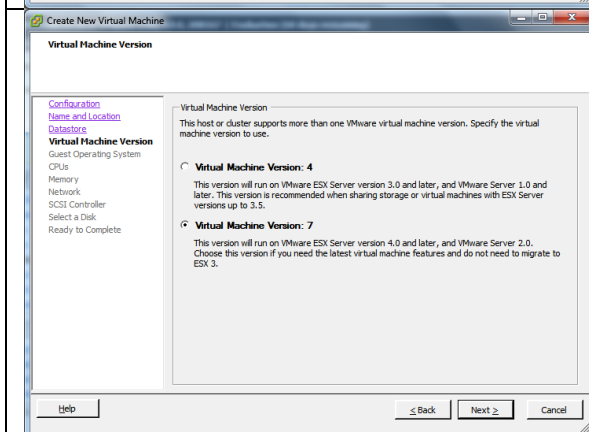
Vælg "Custom"
 Next



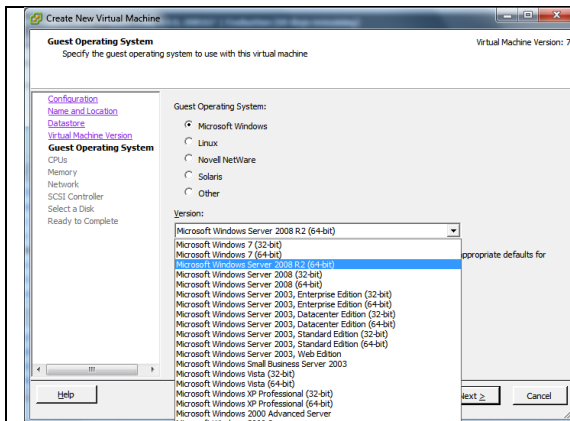
Angiv navn
 Next



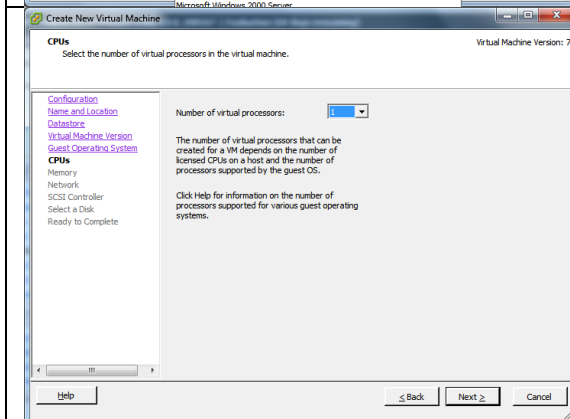
Vælg datastore
 Next



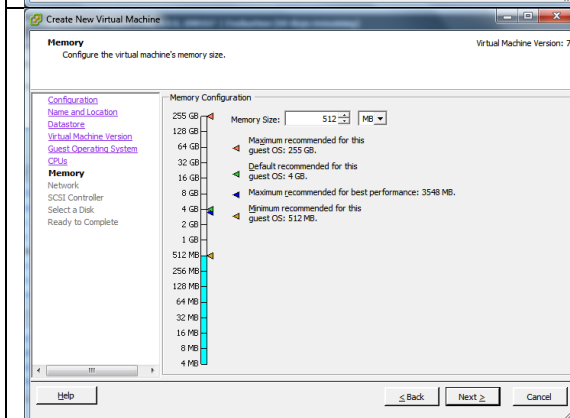
Next



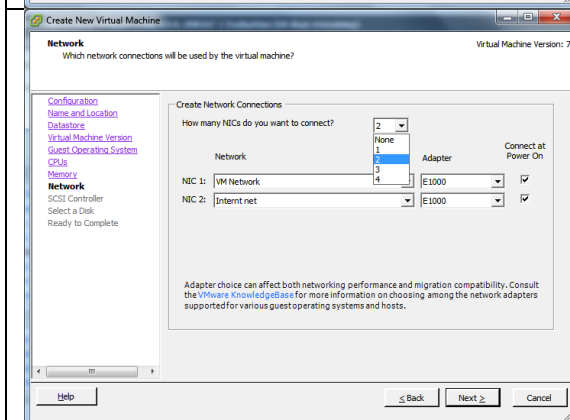
Vælg korrekt OS
Next



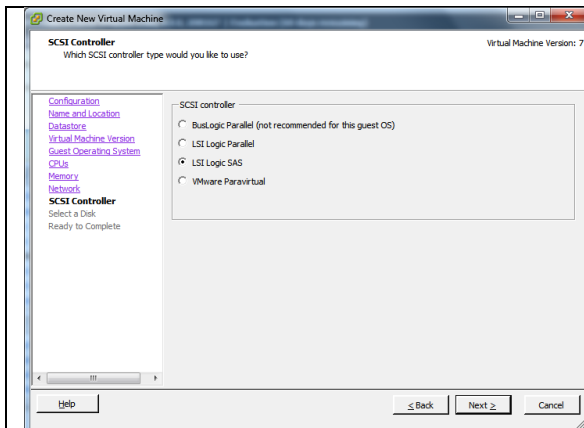
Next



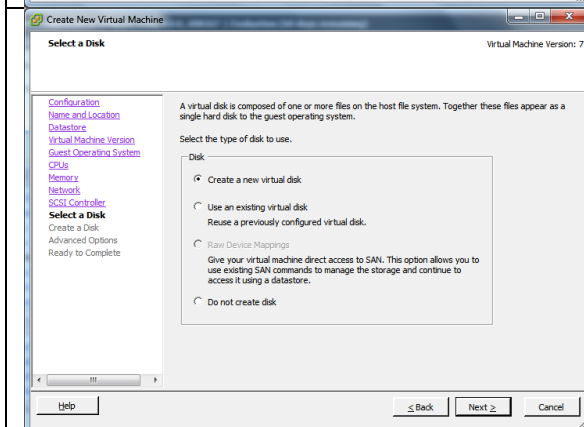
Vælg hukommelse (Typisk minimum i testmiljø, afhængig af Guest OS antal)
Next



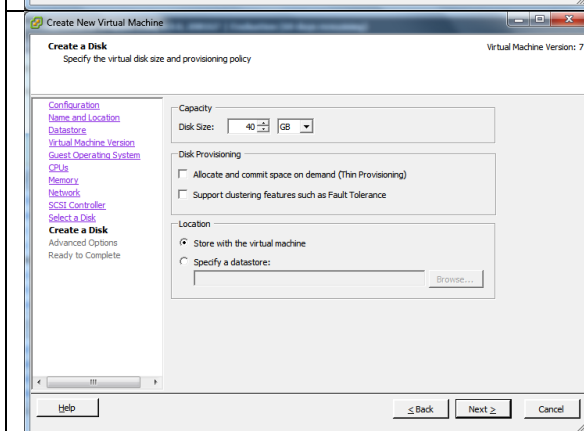
Vælg antal af netkort
Next
(Er alle nødvendige netværk oprettet, kan maskinen her konfigureres med netværk tilslutninger med op til 4 virtuelle netkort.)



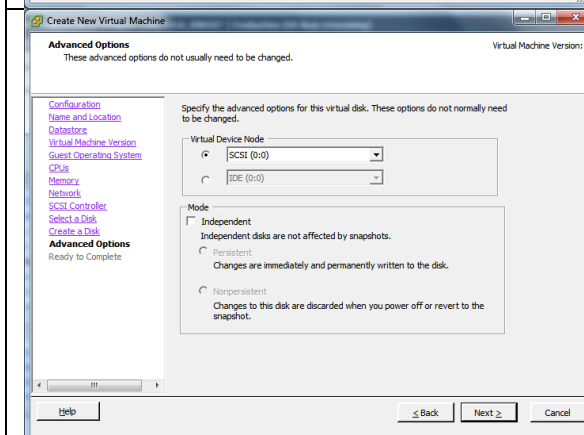
Next



Next



Angiv størrelsen på den virtuelle harddisk
Next



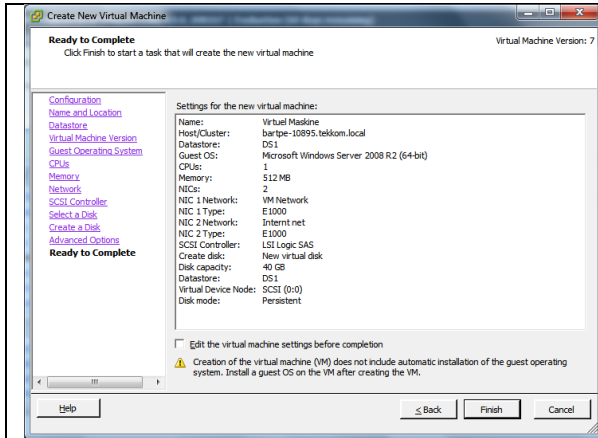
Ved Server OS

Next

Ved klient OS

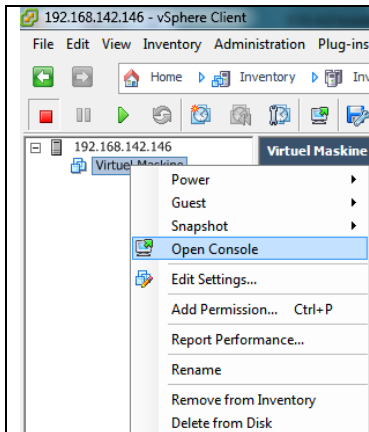
Vælg under Virtual Device Node "IDE (0:0)"
(Kritisk ved Windows XP, der ikke har SCSI drivere inkluderet i driverbasen)

Next

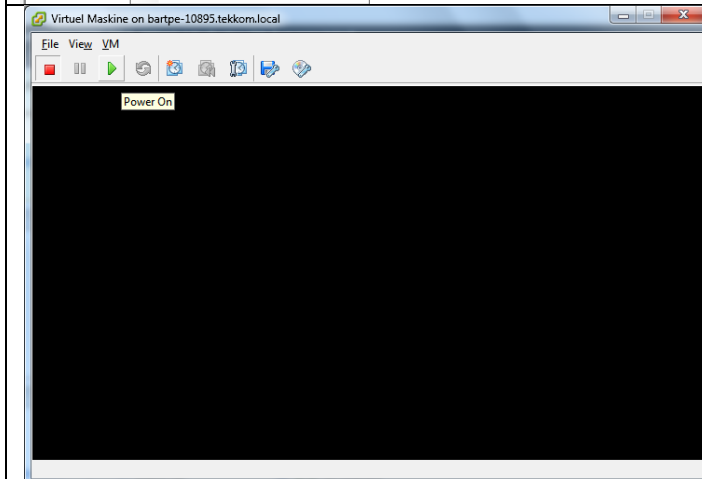


Kontroller oversigten.
Finish

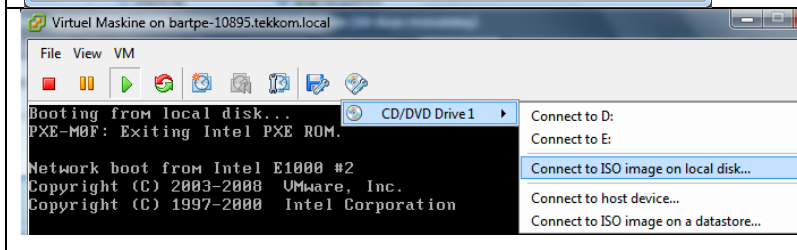
Arbejde med Guest OS



Højreklik på Guest OS og vælg
"Open Console"

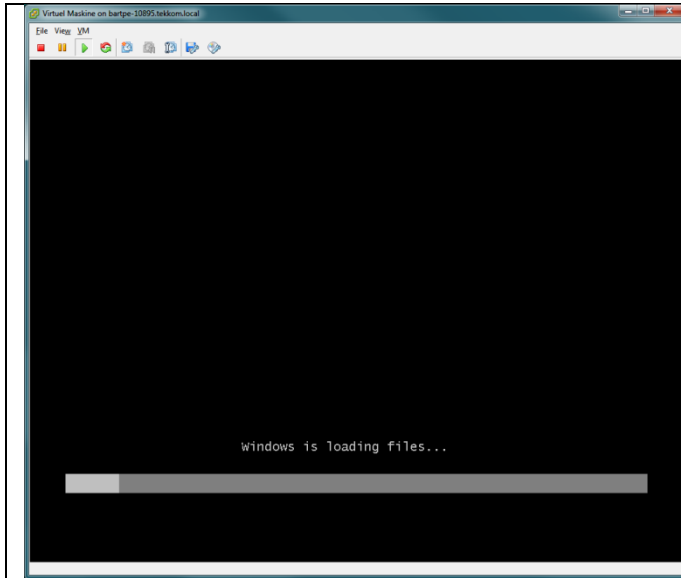


Tryk på "Play" knappen for at
starte maskinen.



Klik på CD ikonet og vælg kilde
til installationsmediet.
Typisk "Connect to ISO image
on local disk..."

Herefter genstart med
CTRL+ALT+INSERT



Guest OS installationen kan påbegyndes.