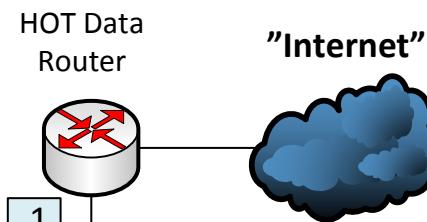


Logisk diagram for Gruppe _____.

AMU 44949 - Netteknik - Server – Teknisk administration
 EUD 6226 – Serverteknologi I
 Dato: 16. Januar 2018

Group _____ Cisco DMZ/VLANs:

Network: 10.0.____.____/28
 Husk: DHCP Service, NAT & Firewall ☺



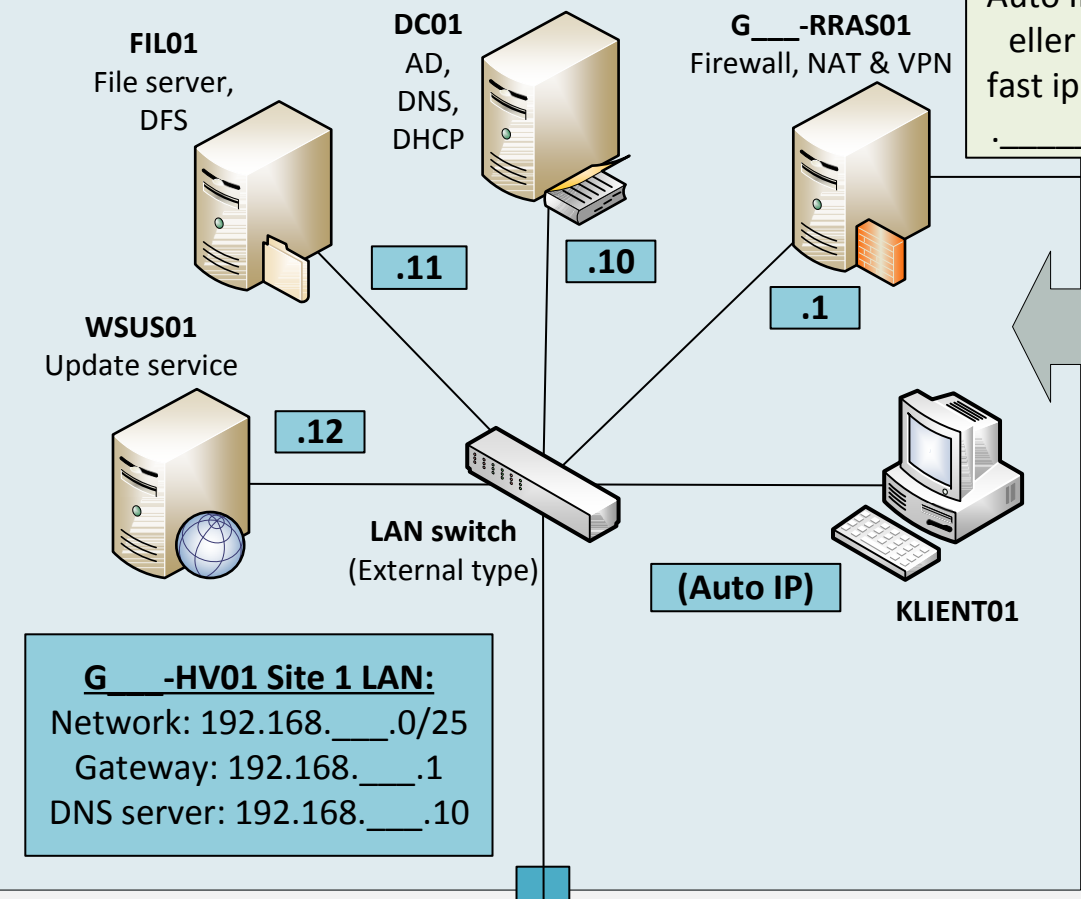
IP Net i TVC Datas lokaler:
 Network: 192.168.x.x/24
 Gateway: 192.168.x.1
 DNS servere: 192.168.130.10,
 192.168.130.11
 Spørg, hvis du er i tvivl!

Adgangskoder:
 Følgende root / admin brugernavn og adgangskode skal bruges overalt af hensyn til underviser-support & senere i forbindelse med fejlfinding:
 Bruger: **administrator**
 Adgangskode: **Password1**

Gruppe 1's fysiske maskine med Microsoft Server2012 R2 Hyper-V

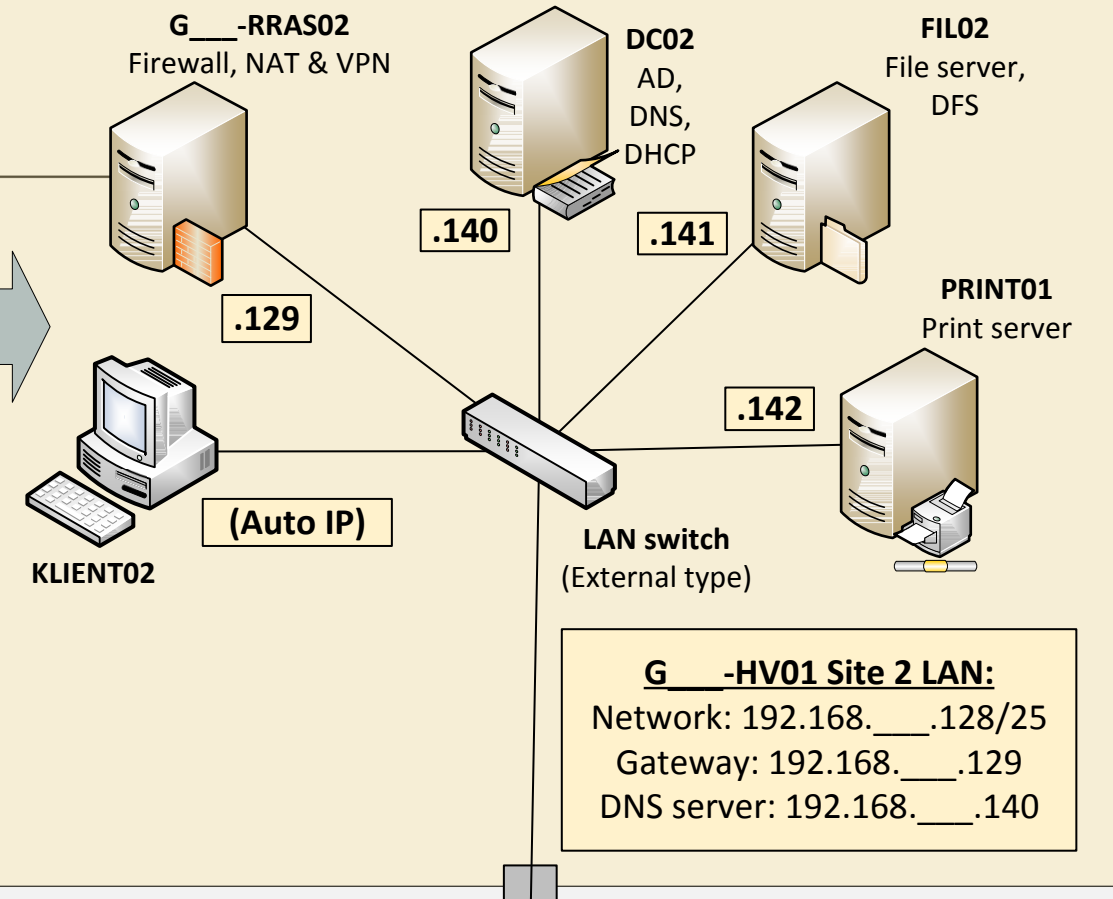
Gruppe 1 – Site 1 & 2: Samme firma = samme domæne!

Site 1: Hyper-V Infrastruktur (Bygges først ... !)



G___-HV01 Site 1 LAN:
 Network: 192.168.____.0/25
 Gateway: 192.168.____.1
 DNS server: 192.168.____.10

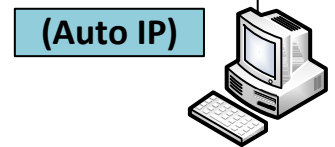
Site 2: Hyper-V Infrastruktur (Bygges efter Site 1 ... !)



G___-HV01 Site 2 LAN:
 Network: 192.168.____.128/25
 Gateway: 192.168.____.129
 DNS server: 192.168.____.140

VPN Site-to-site Tunnel

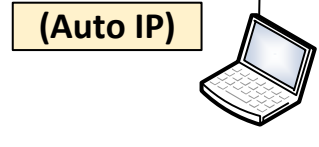
Dette er Gruppe _____ DMZ zone!



Windows Site 1 management from pc or Student laptop ...



Skærm, keyboard & mus på pc: Hyper-V management



Windows Site 2 management from pc or Student Laptop ...