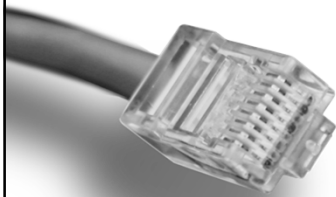


RTP



HOUSE OF
TECHNOLOGY



- en del af **mercantec**⁺

Real Time Protocol

TDC IP telefoni Scale



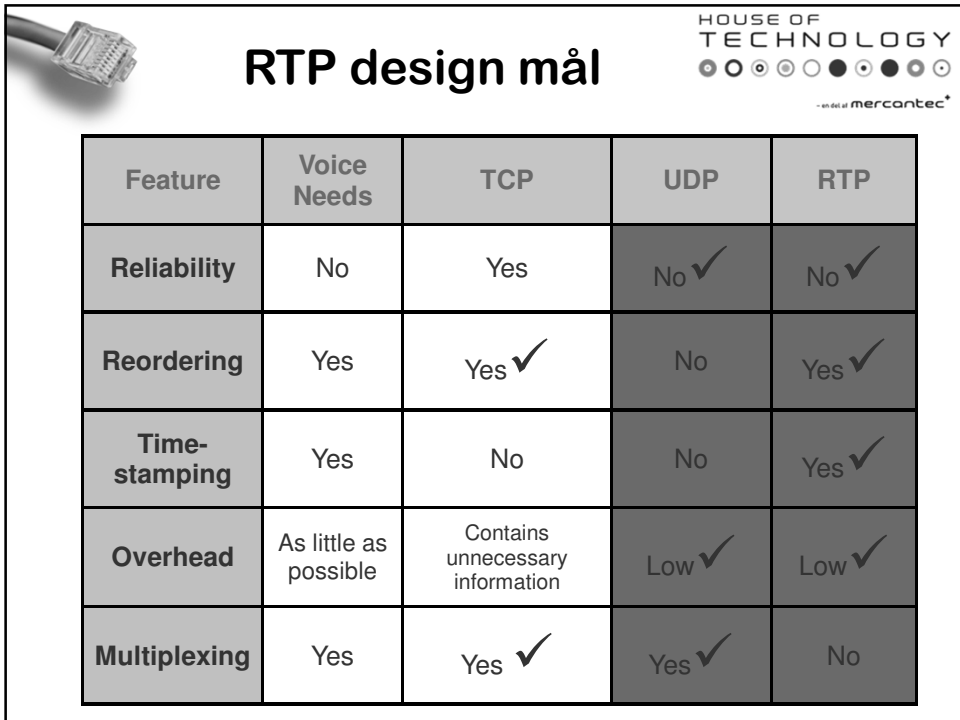
RTP design mål

HOUSE OF
TECHNOLOGY



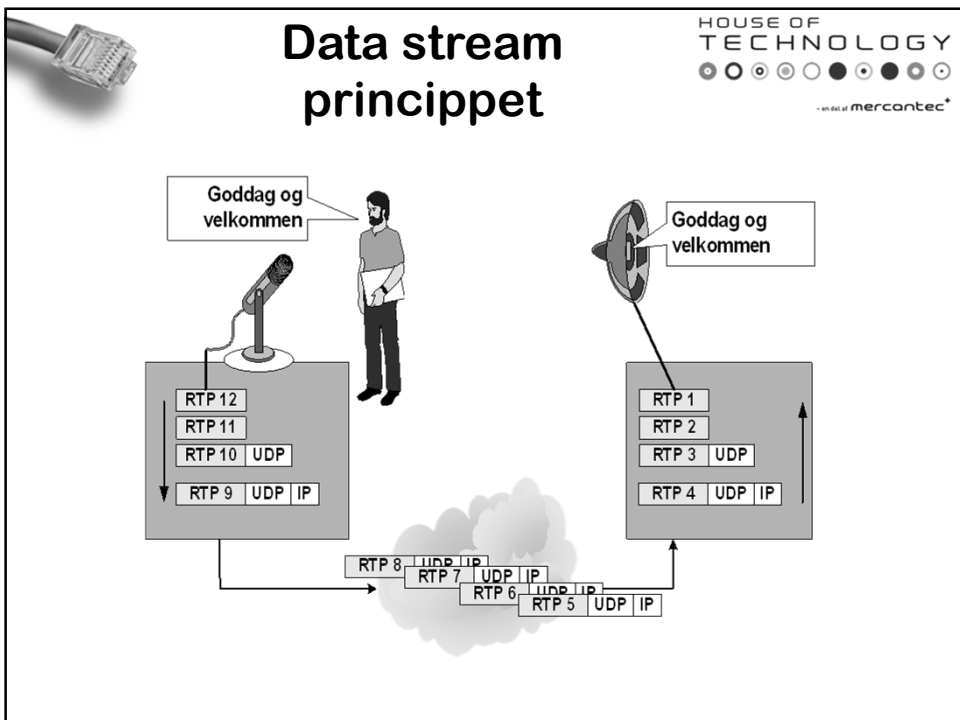
- en del af **mercantec**⁺

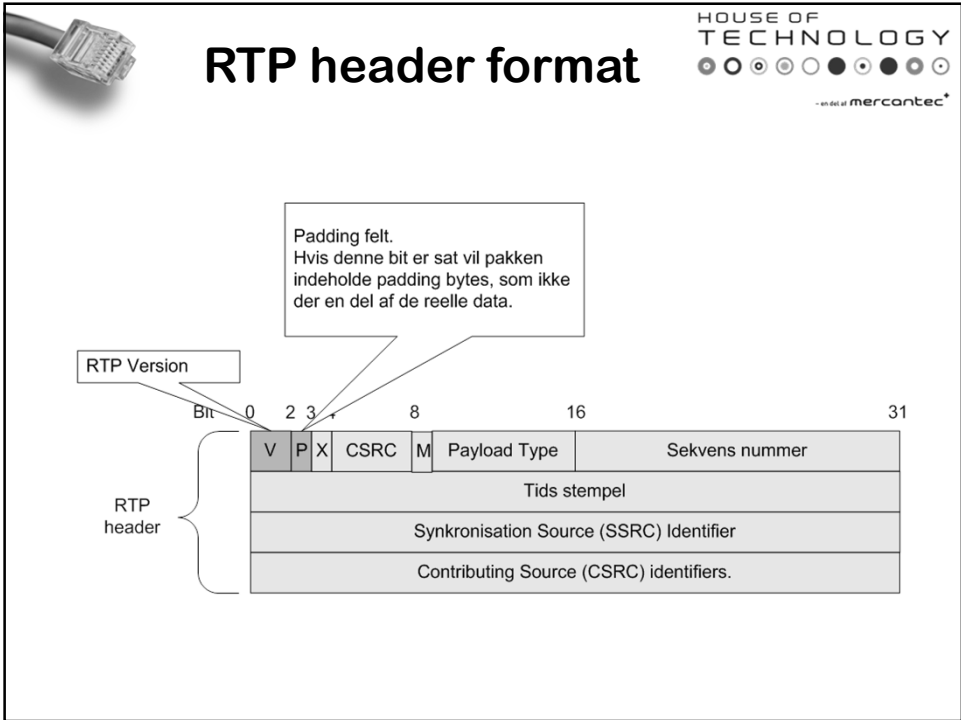
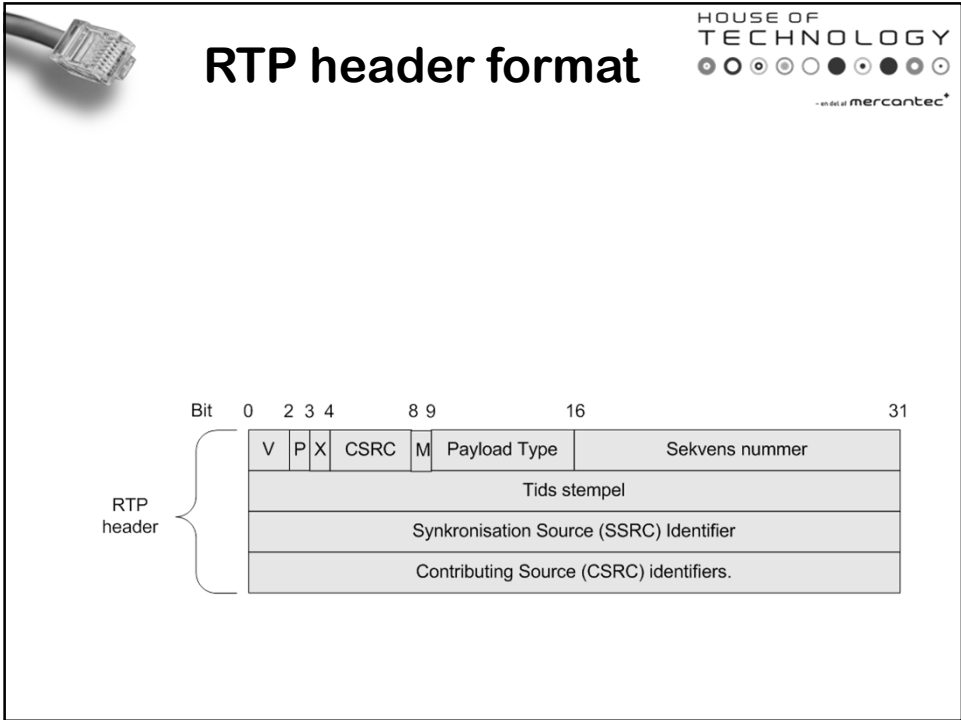
- Skal give mulighed for at tids synkronisere en kontinuerlig strøm af data
- Skal give mulighed for a overføre forskellig type af data
 - Video (forskellige formater)
 - Lyd (forskellige formater)
 - Anden type af data

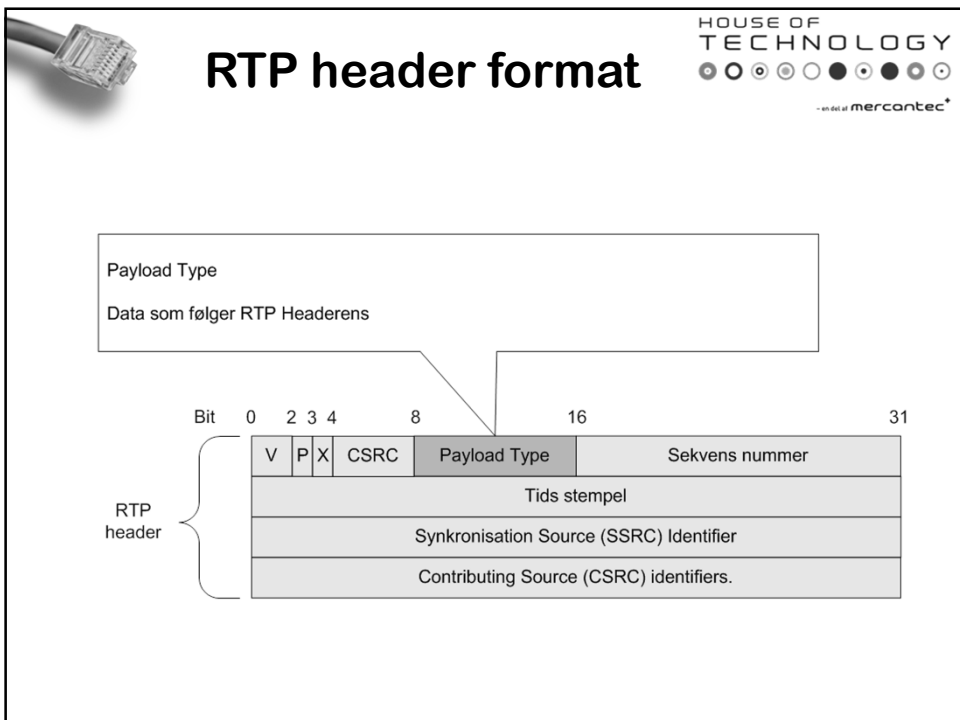
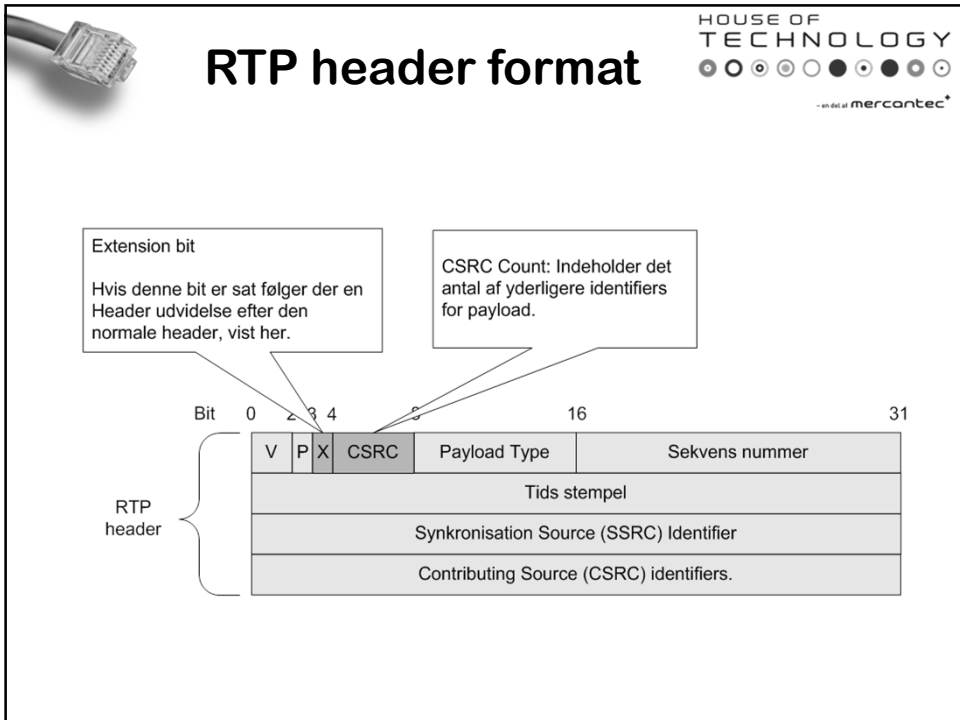



HOUSE OF TECHNOLOGY
- en del af mercantec*

Feature	Voice Needs	TCP	UDP	RTP
Reliability	No	Yes	No ✓	No ✓
Reordering	Yes	Yes ✓	No	Yes ✓
Time-stamping	Yes	No	No	Yes ✓
Overhead	As little as possible	Contains unnecessary information	Low ✓	Low ✓
Multiplexing	Yes	Yes ✓	Yes ✓	No







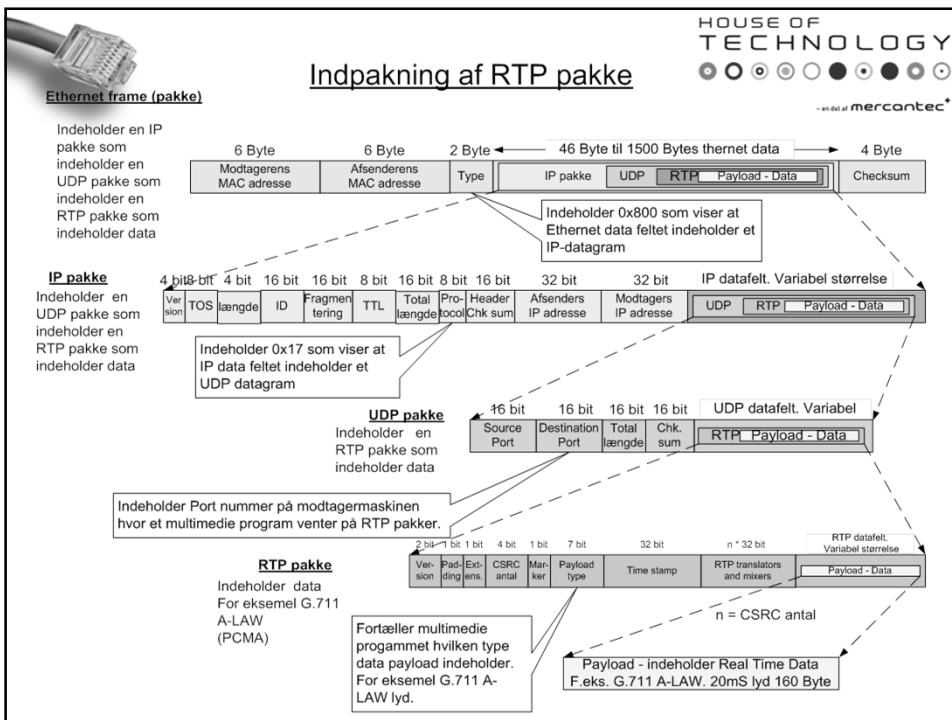


HOUSE OF TECHNOLOGY

— en del af mercantec*

RTP og RTCP

- RTP – Real Time Protocol
 - Tilbyder transport af real-time data i et pakkekoblet netværk
- RTCP – Real Time Control Protocol
 - Overvåger kvaliteten af RTP data strømme.





Opgave

- Hvor meget båndbredde bruger G.722 på med IP headeren

