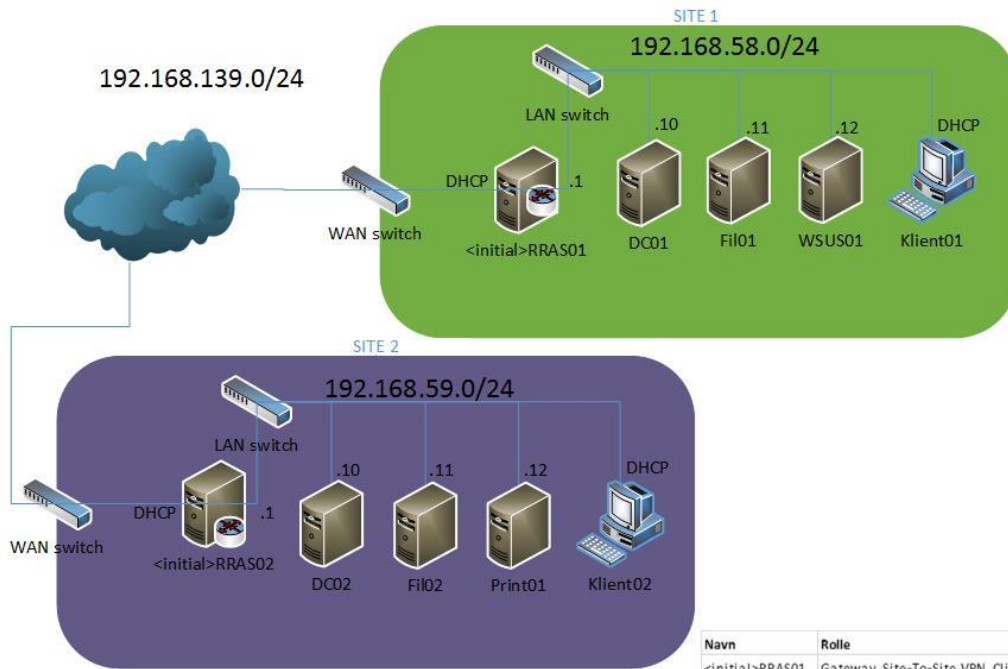


Configuring Active Directory Sites

In this guide we will create site 1 and site 2 in Active Directory Sites and Services and make use of service localization.



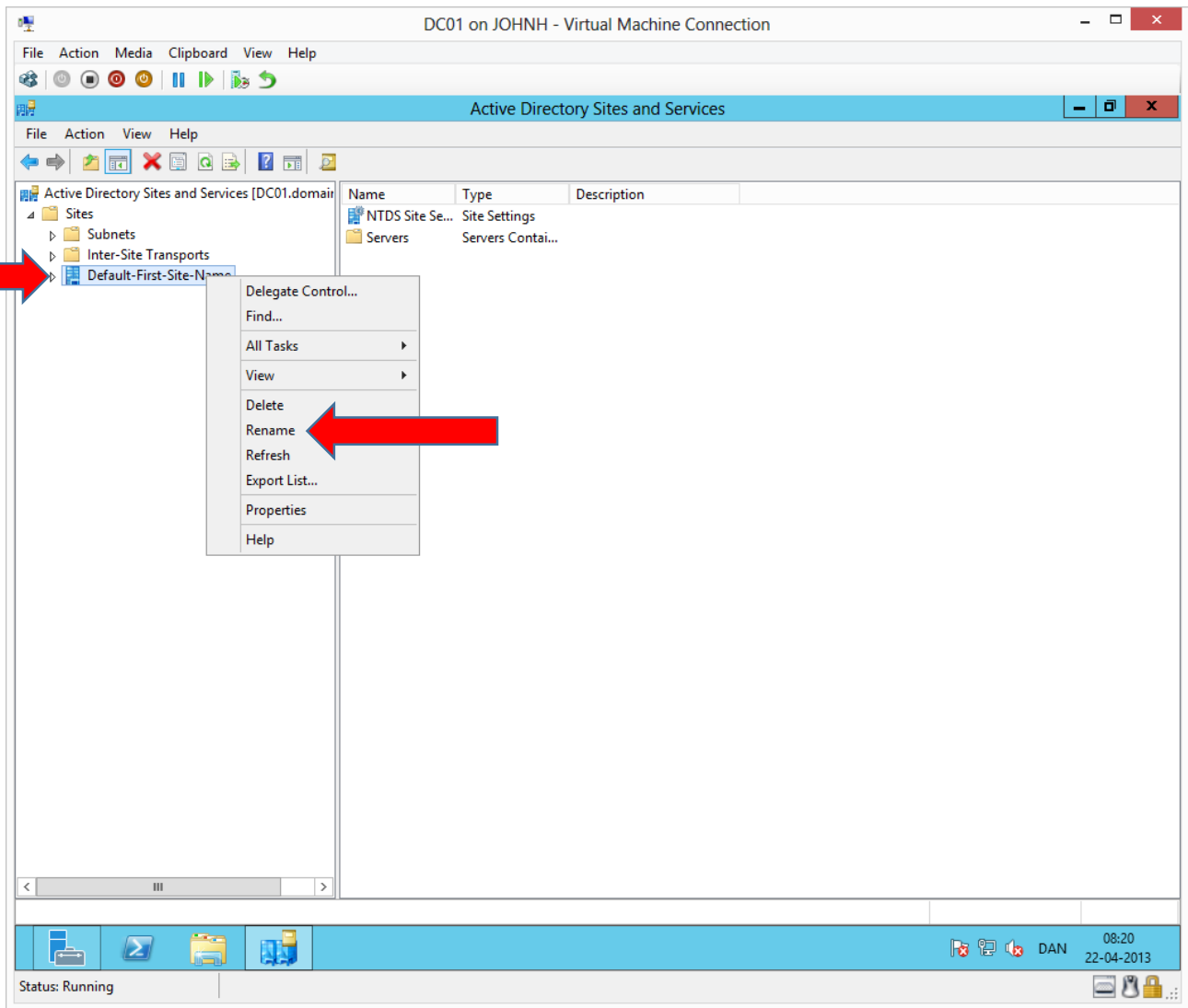
Navn	Rolle	Operativsystem
<initial>RRAS01	Gateway, Site-To-Site VPN, Client/server VPN	Server 2012 Standard
DC01	Domain Controller, DNS, DHCP, PKI	Server 2012 Standard
FIL01	Fileserver	Server 2012 Standard
WSUS01	Windows Server Update Services Server	Server 2012 Standard
<initial>RRAS02	Gateway, Site-To-Site VPN, Client/server VPN	Server 2012 Standard
DC02	Domain Controller, DNS, DHCP	Server 2012 Standard
FIL02	Fileserver	Server 2012 Standard
Print01	Printserver	Server 2012 Standard
Klient01	Workstation	Windows 8 Enterprise
Klient02	Workstation	Windows 8 Enterprise

Configuring Active Directory Sites and Services

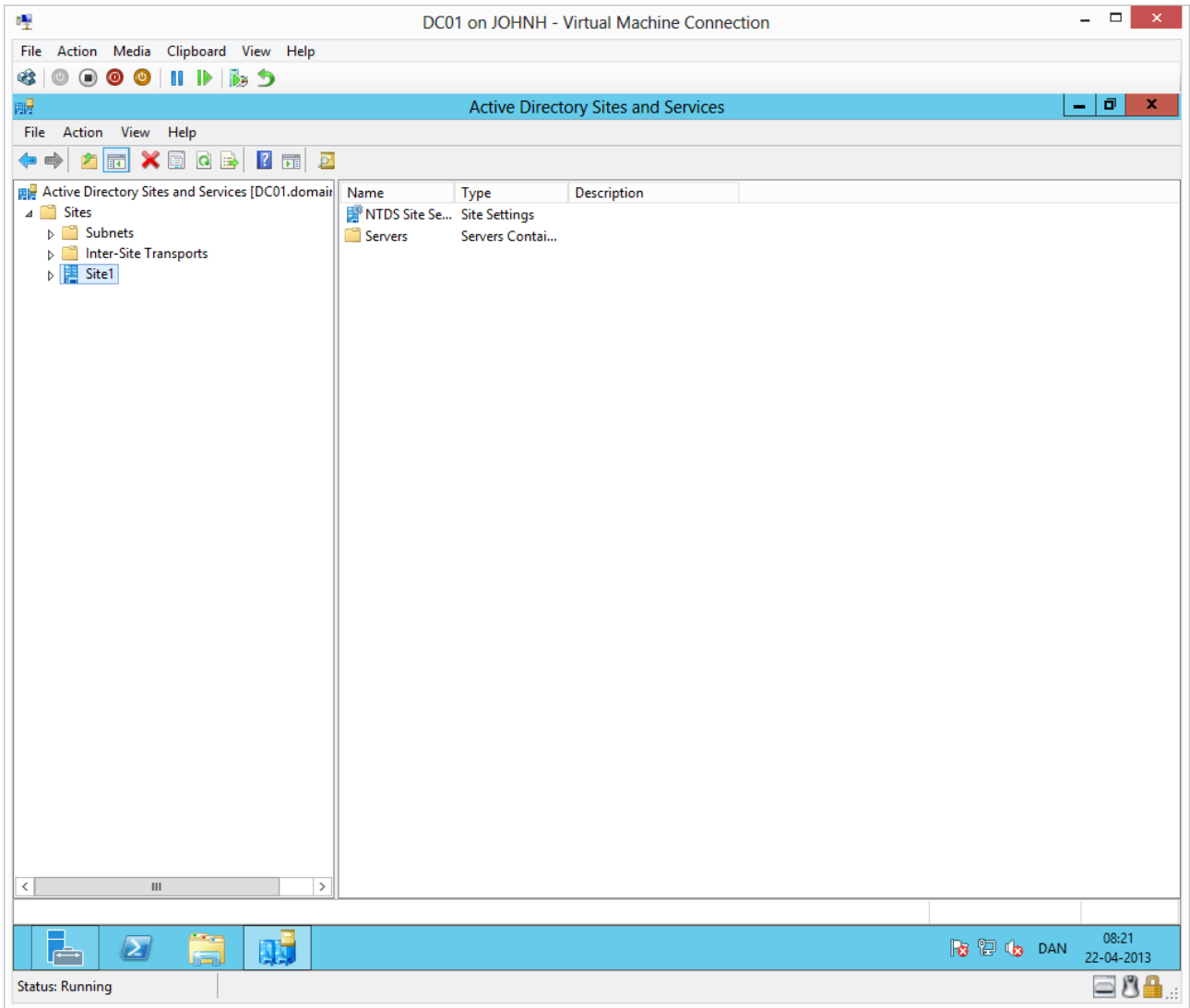
The screenshot shows the Windows Server Manager interface for a virtual machine named 'DC01 on JOHNNH'. The main dashboard displays a 'WELCOME TO SERVER MANAGER' section with a 'QUICK START' guide containing four steps: 1. Configure this local server, 2. Add roles and features, 3. Add other servers to manage, and 4. Create a server group. Below this, the 'ROLES AND SERVER GROUPS' section shows 'AD DS' and 'DHCP' roles, each with a 'Manageability' status and sub-items like 'Events', 'Services', 'Performance', and 'BPA results'.

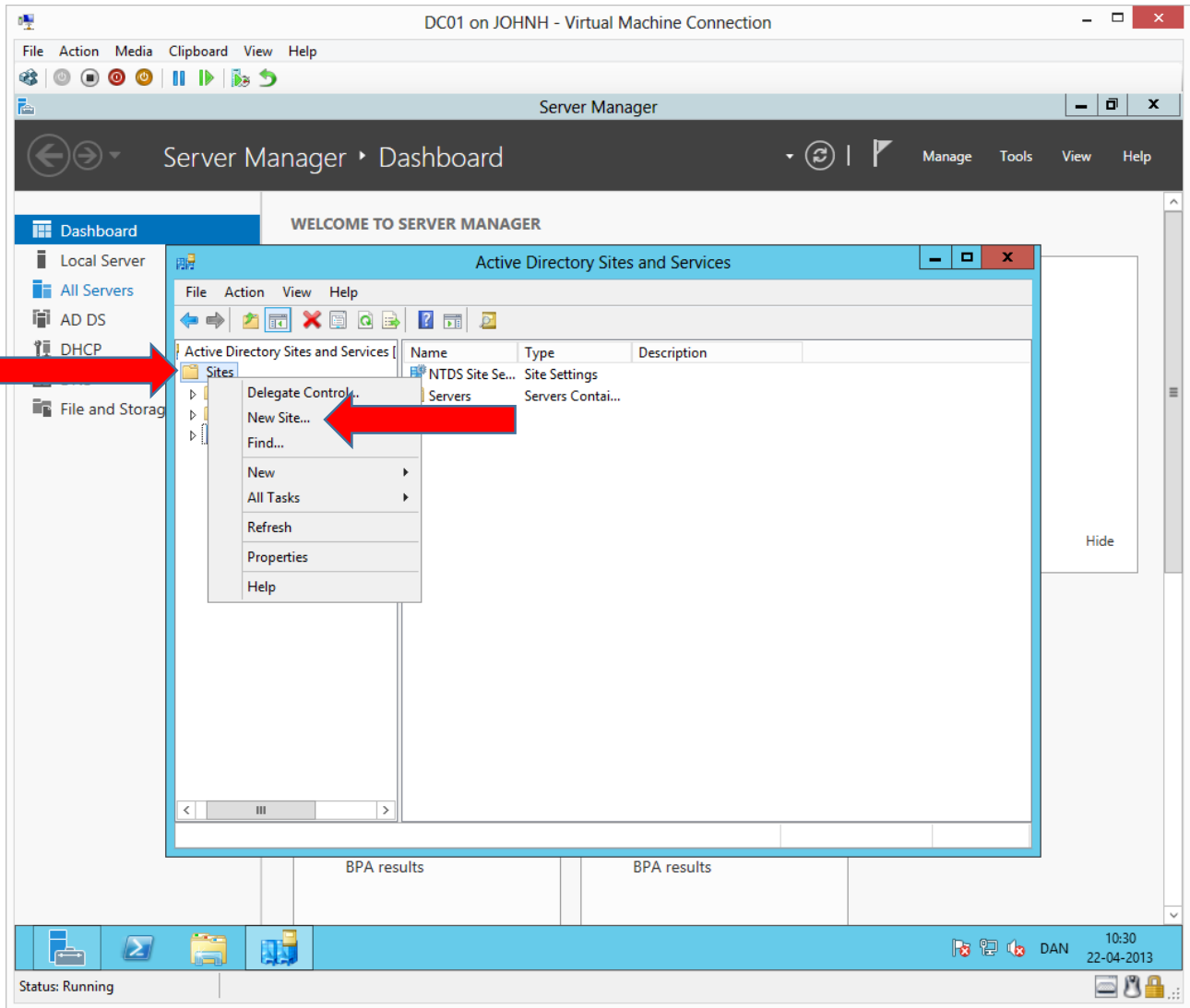
The 'Tools' menu is open, listing various administrative tools. A red arrow points to 'Active Directory Sites and Services' in the list. Other visible items in the menu include Active Directory Administrative Center, Active Directory Domains and Trusts, Active Directory Module for Windows PowerShell, Active Directory Users and Computers, ADSI Edit, Component Services, Computer Management, Defragment and Optimize Drives, DHCP, DNS, Event Viewer, Group Policy Management, iSCSI Initiator, Local Security Policy, ODBC Data Sources (32-bit), ODBC Data Sources (64-bit), Performance Monitor, Resource Monitor, Security Configuration Wizard, Services, System Configuration, System Information, Task Scheduler, Windows Firewall with Advanced Security, Windows Memory Diagnostic, Windows PowerShell, Windows PowerShell (x86), and Windows PowerShell ISE.

The taskbar at the bottom shows the system tray with the date '19-04-2013' and time '09:50', along with icons for network, volume, and power. The status bar indicates 'Status: Running'.

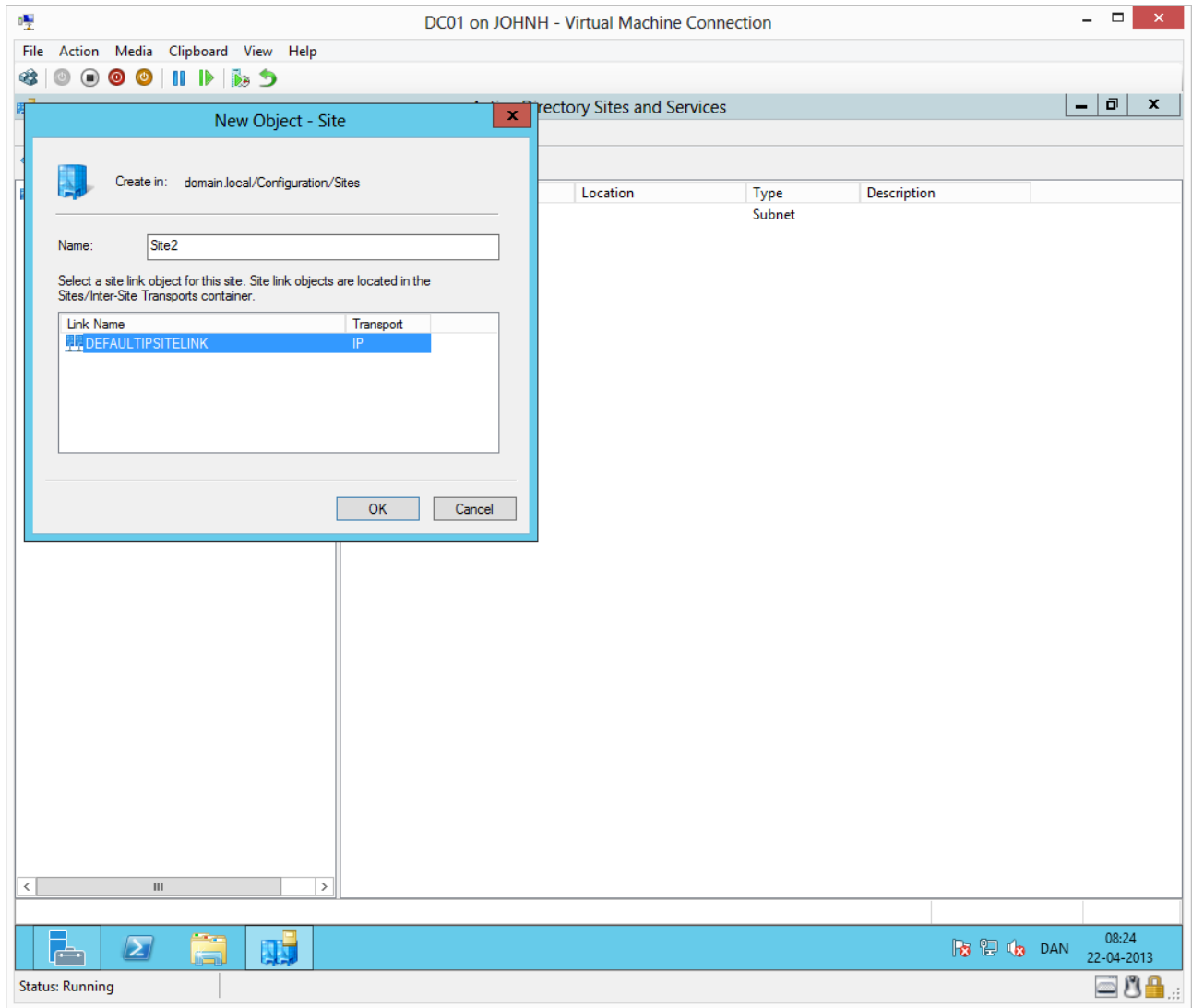


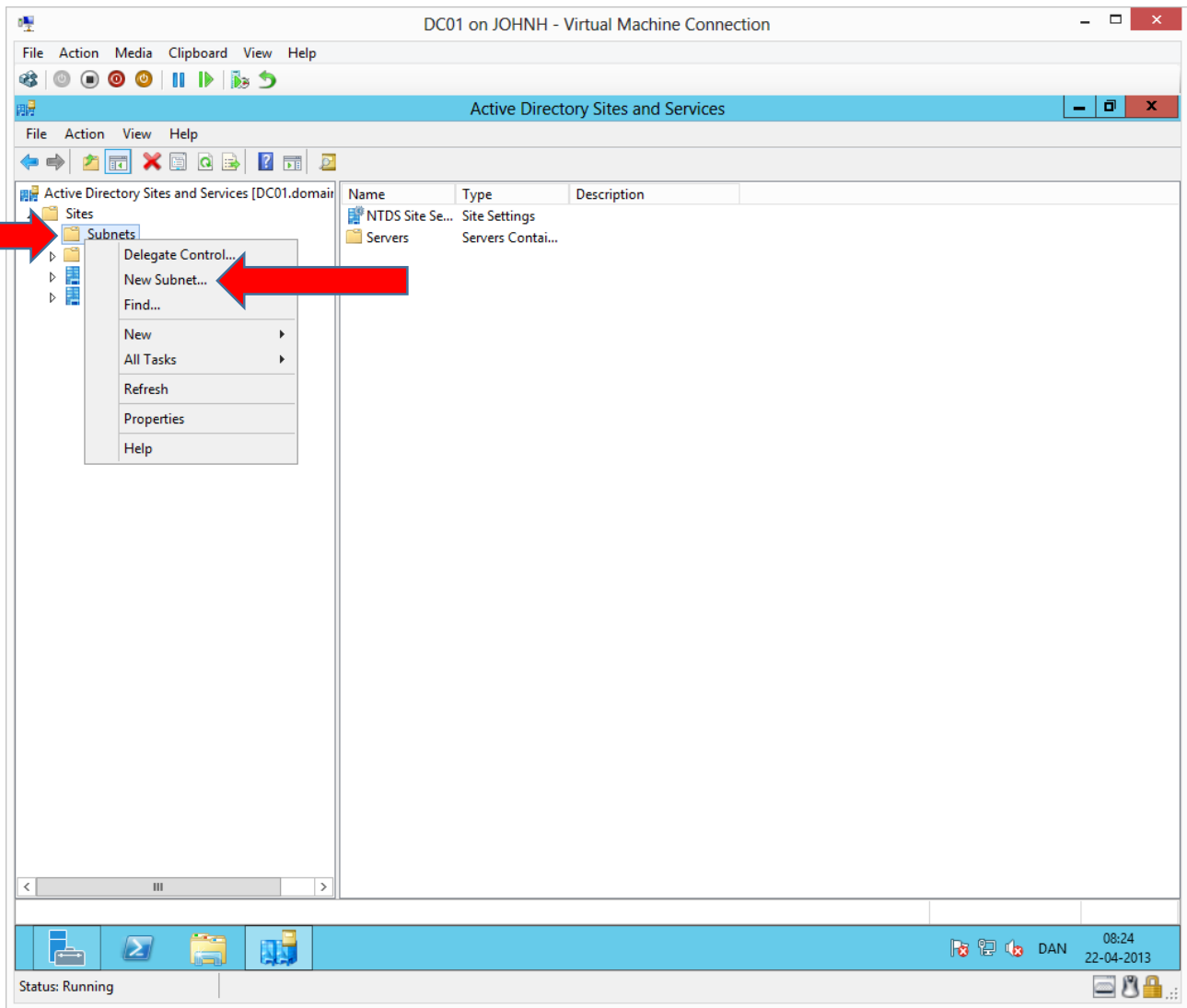
Right click and rename the site **Default-First-Site-Name** to **Site1**



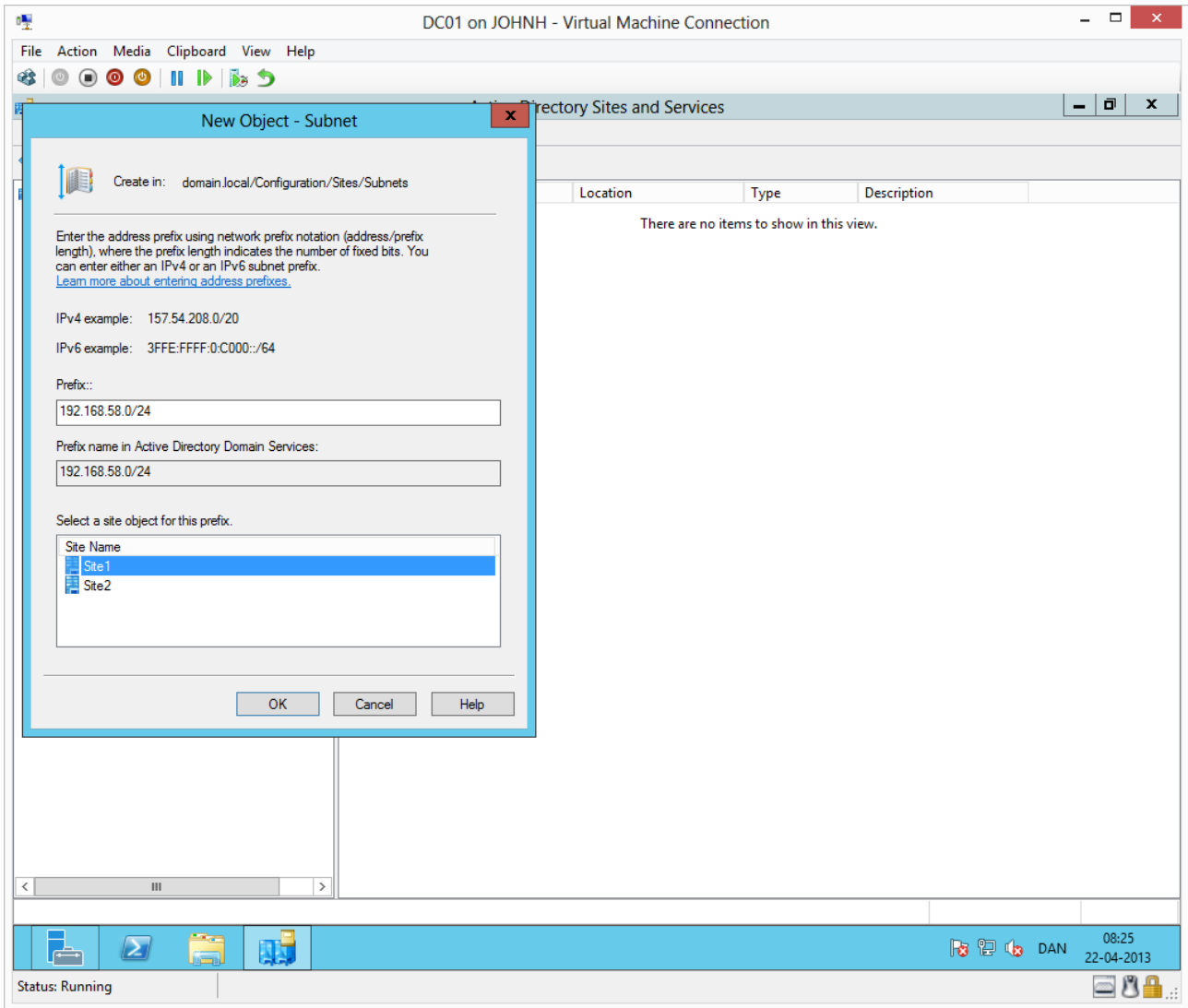


Right click on sites and choose **new site**

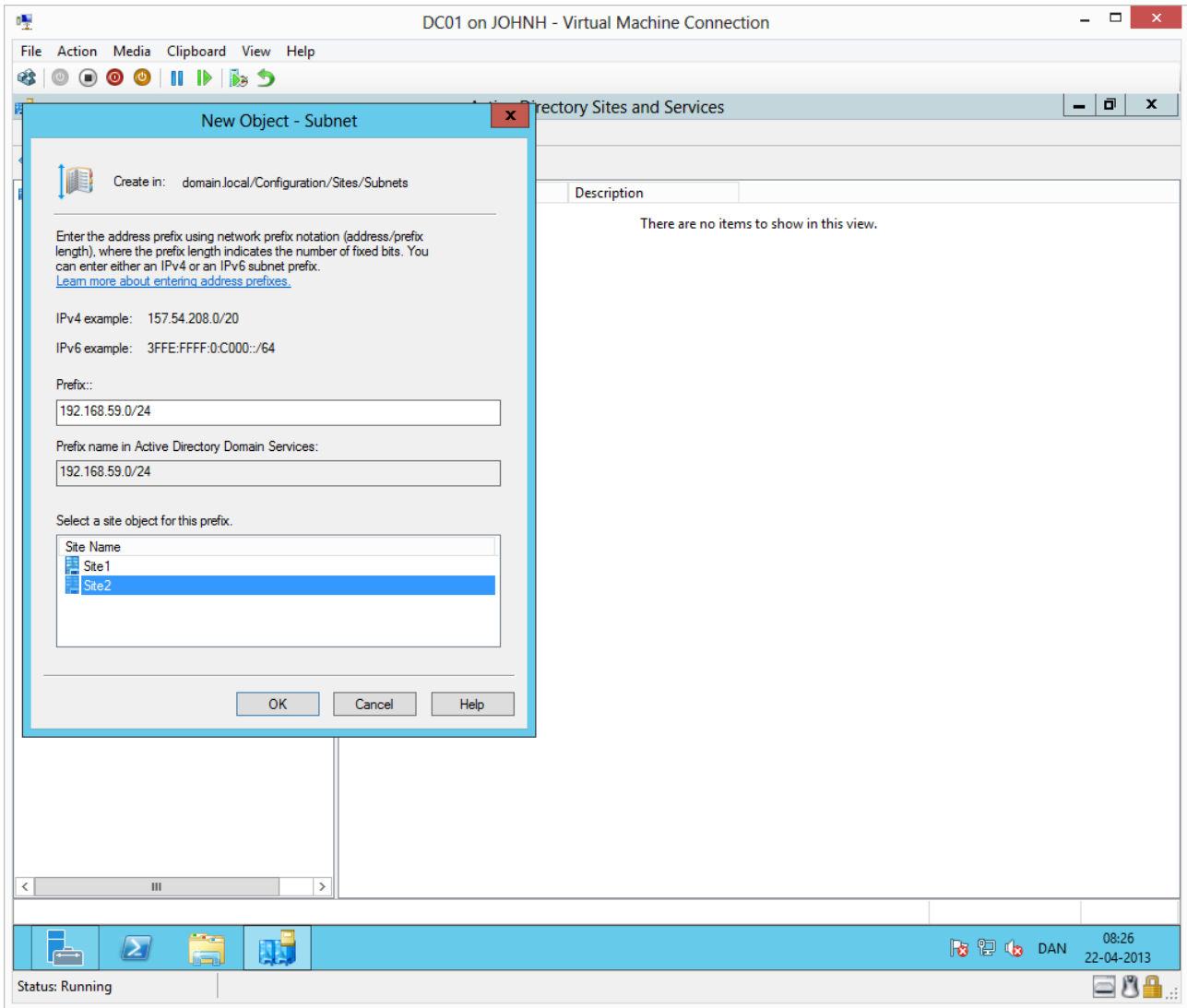




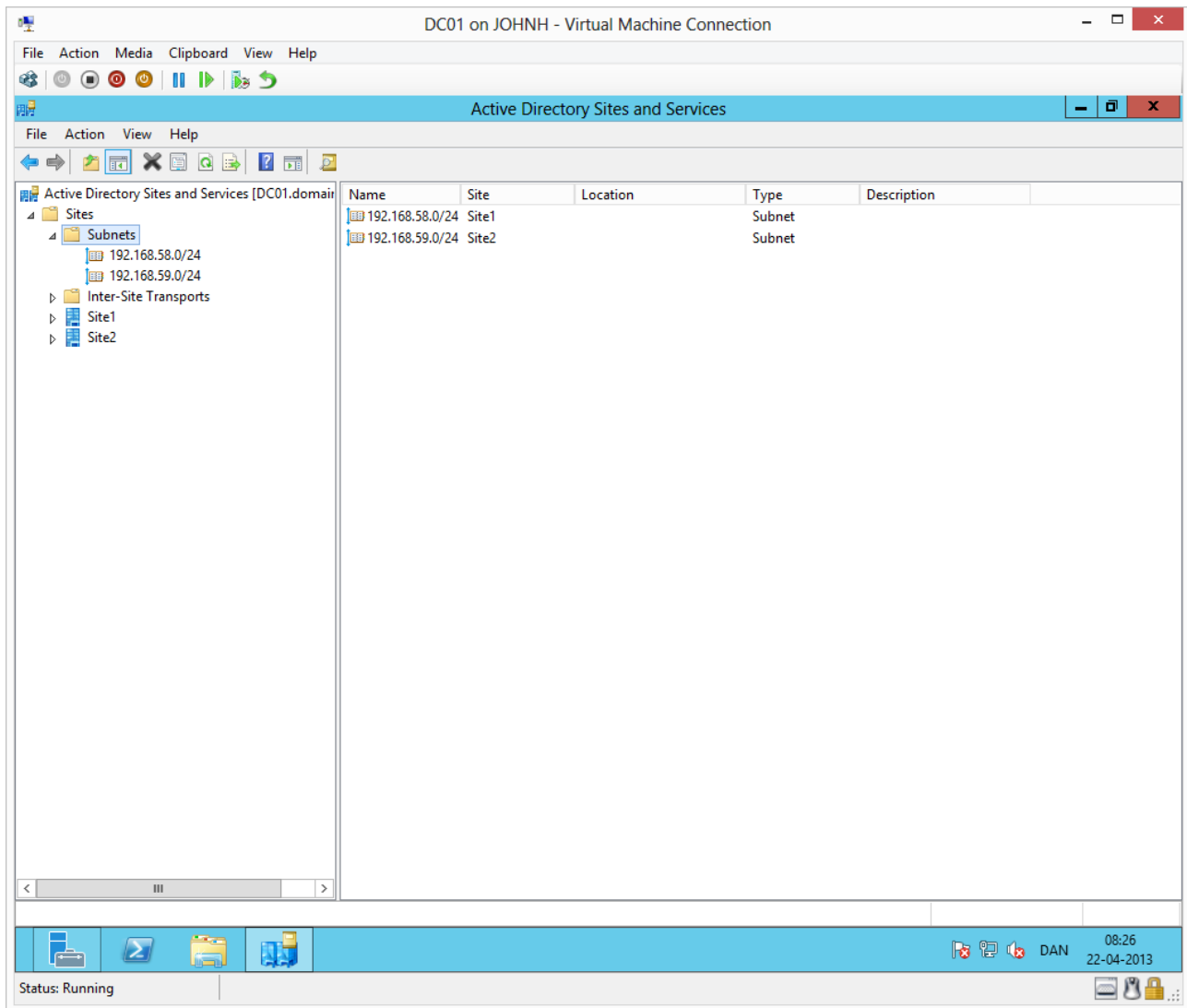
Right click on subnets and choose **New subnet....**



Type the network address for the site 1 subnet and select the site 1 object.



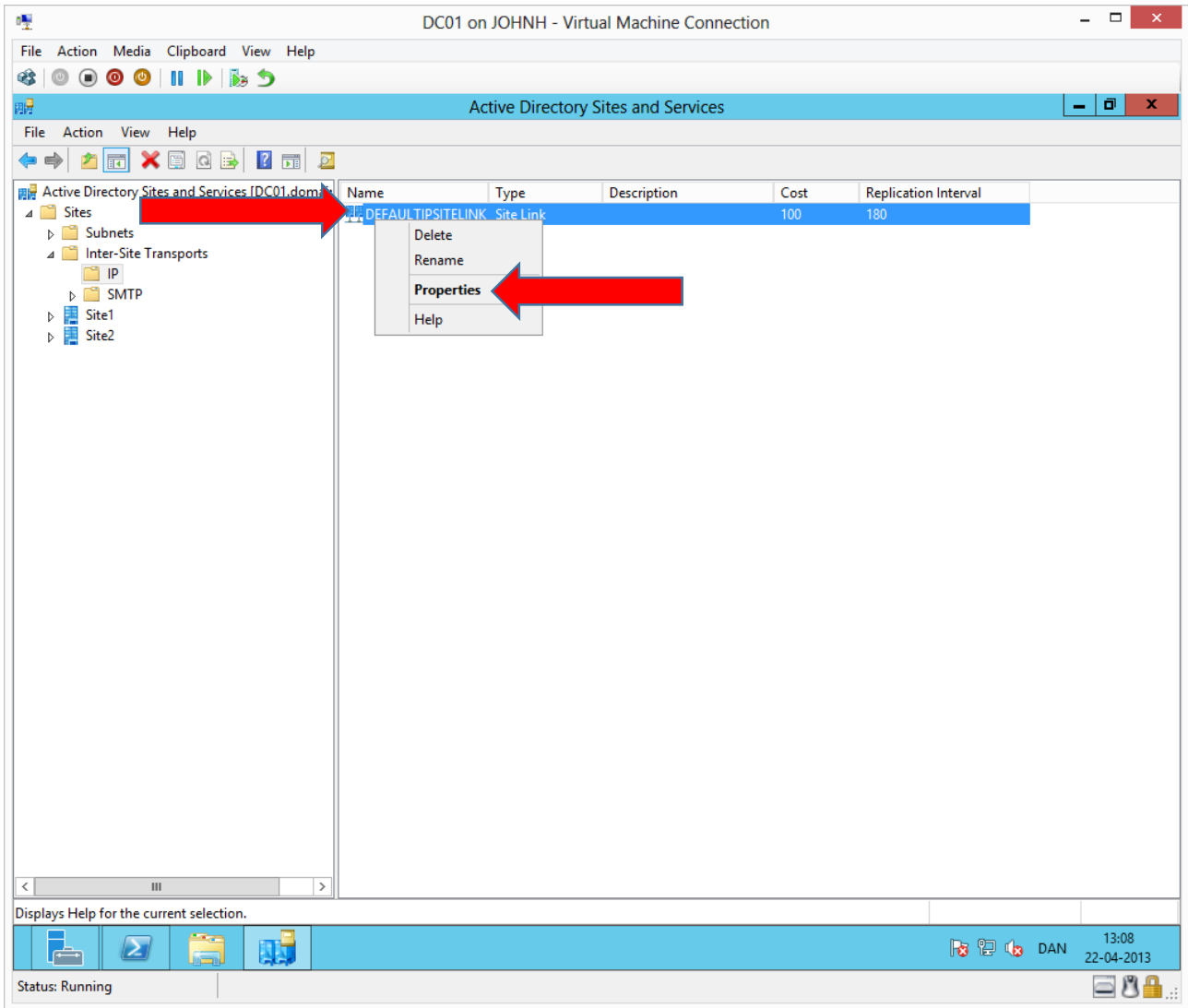
Combine in the same way site 2 with the site 2 subnet.



It must look like this.

Configuring site replication

We will configure site replication to occur every 15. minutes.



Right click **DEFAULTIPSITELINK** and choose **Properties**

The screenshot shows the Active Directory Sites and Services console for a domain controller named DC01. The console displays a tree view on the left with 'Sites' expanded to show 'Site1' and 'Site2'. The main pane shows a table of site links:

Name	Type	Description	Cost	Replication Interval
DEFAULTIPSITELINK	Site Link		100	180

The 'DEFAULTIPSITELINK Properties' dialog box is open, showing the 'General' tab. The 'Description' field is empty. The 'Sites in this site link' list contains 'Site1' and 'Site2'. The 'Cost' is set to 100. The 'Replicate every' field is set to 15 minutes. The 'OK' button is highlighted with a red arrow.

At the bottom of the console, the status bar shows 'Status: Running', the user 'DAN', and the date and time '13:10 22-04-2013'.