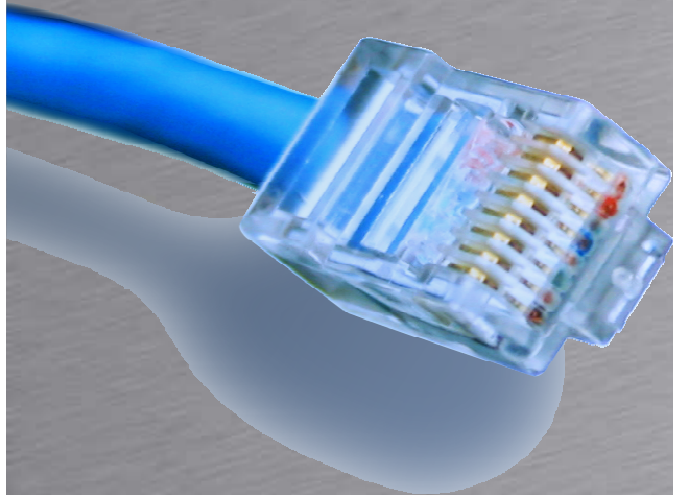


# RPM



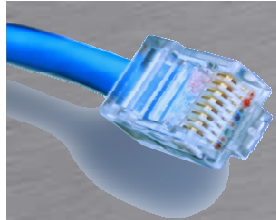
HOUSE OF  
TECHNOLOGY



- en del af **mercantec<sup>+</sup>**

## Real-Time Performance Monitoring

Rasmus Elmholt V1.0



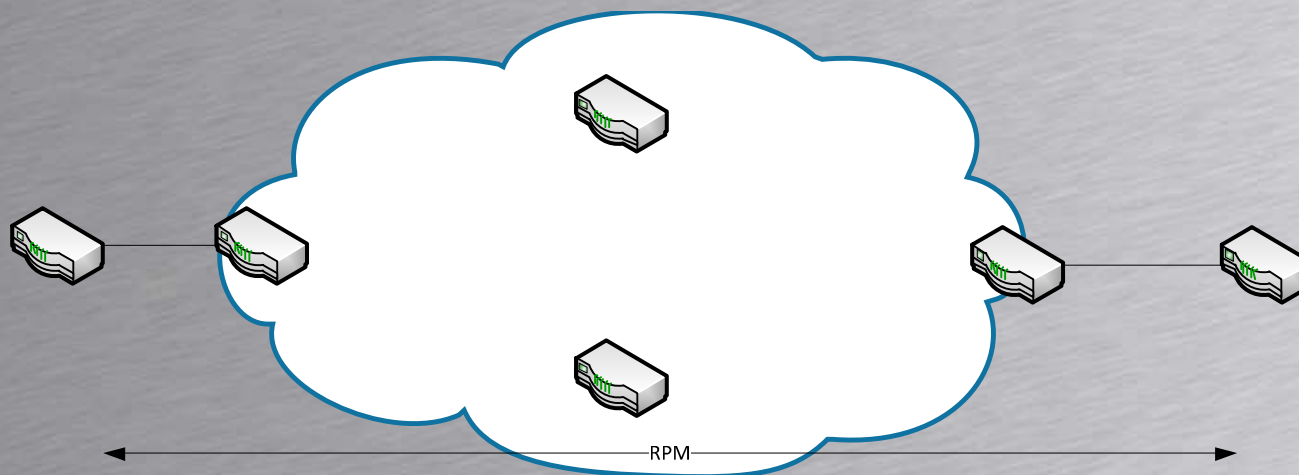
# RPM

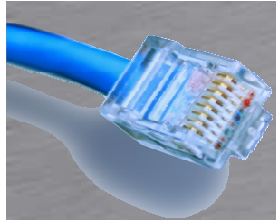
HOUSE OF  
TECHNOLOGY



an ahl of mercontec<sup>+</sup>

- RPM bruges til at måle latency i netværk
  - Virker mellem 2 enheder der kører JunOS(UDP & TCP Ping)
  - Routerne generer periodiske probes
  - Timestamper alle beskeder for at måle RTT



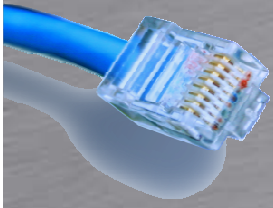


# RPM

- Eksempel

```
[edit services rpm]
root@SRX210# show
probe CPE1 {
    test PING-TEST-CPE1 {
        probe-type icmp-ping-timestamp;
        target address 10.0.0.1;
        probe-count 10;
        probe-interval 1;
        test-interval 60;
    }
}
```

- Show service rpm probe-results



# RPM

- Opgaver
  - Alle CPE Routerne skal have udp-ping-timestamp til alle andre CPE Routerer
    - Aftal selv UDP port osv.
  - Alle CPE Routerne skal have ping-timestamp mode deres P Router