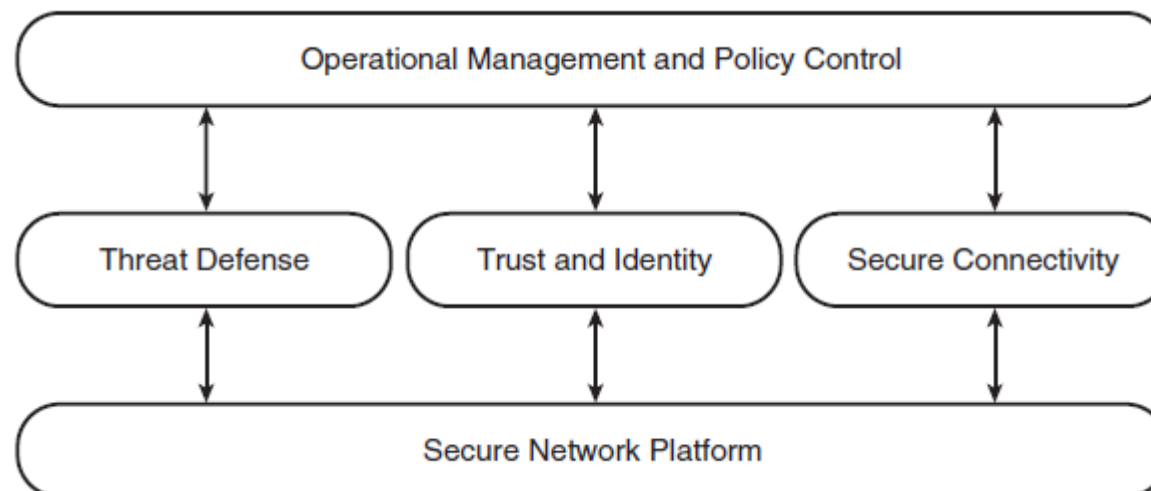


# Chapter 14

## Cisco Self-Defending Network

- Adaptive Security Appliance (ASA)
- Integrated Services Router (ISR)
- Cisco Catalyst switches



# Chapter 14

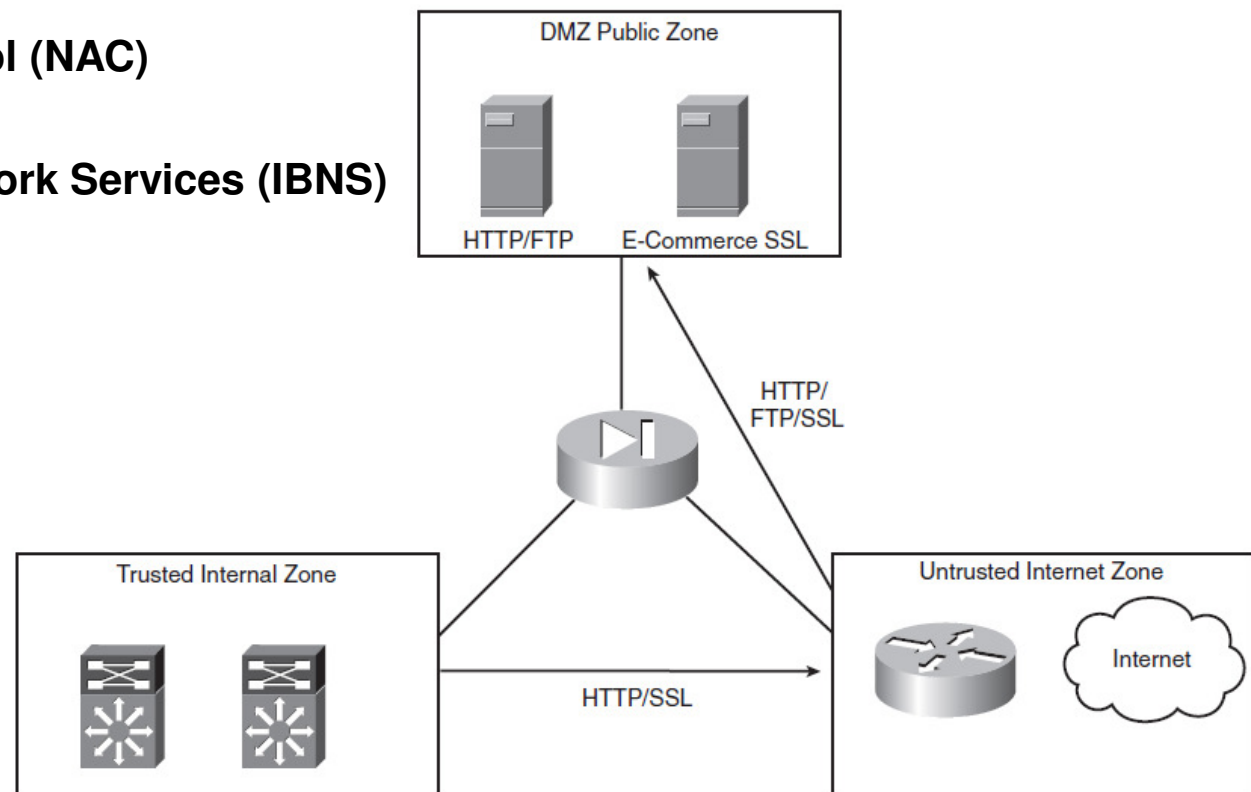
## Self-Defending Network Phases

- **Integrated security**
- **Collaborative security**
- **Adaptive threat defense**

# Chapter 14

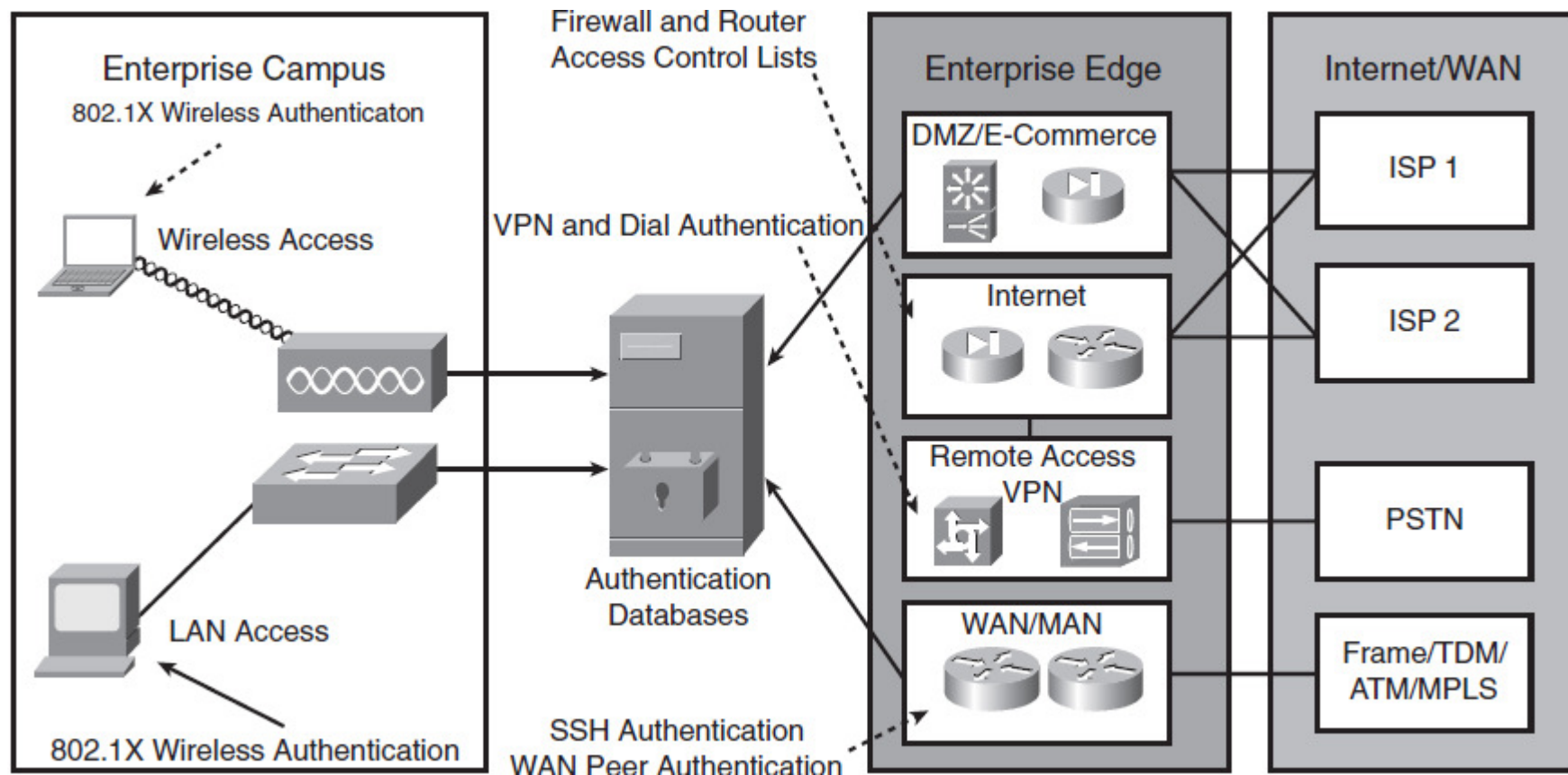
## Trust and Identity Technologies

- Access control lists
- Firewall
- Network Admission Control (NAC)
- 802.1X
- Cisco Identity-Based Network Services (IBNS)



# Chapter 14

## Identity and Access Control Deployments



# Chapter 14

## Threat Detection and Mitigation

- **Threat detection & mitigation**

- PIX
- FWSM
- ASA
- IOS firewall
- IPS
- Cisco Security Agent

- **Network monitoring**

- NetFlow
- Syslog
- SNMP
- CS-MARS
- Cisco Traffic Anomaly Detector Module

# Chapter 14

## Security Platform Solutions

- Cisco Security Manager (CSM)
- Cisco Secure Access Control Server (ACS)
- Cisco Security Monitoring, Analysis, and Response System (CS-MARS)
- Management Center for CSA (CSA MC)
- Cisco Router and Security Device Manager (SDM)
- Cisco Adaptive Security Device Manager (ASDM)
- Cisco Intrusion Prevention System Device Manager (IDM)

# Chapter 14

## IOS Security

- Cisco IOS Firewall
- Cisco IOS IPS
- Cisco IOS IPsec
- Cisco IOS Trust and Identity
  - AAA
  - Secure Shell(SSH)
  - Secure Socket Layer(SSL)
  - 802.1X
  - PKI

# Chapter 14

## Catalyst 6500 Services Modules

- **Firewall Services Module (FWSM)**
- **Intrusion Detection Service Module 2 (IDSM2)**
- **SSL Service Module**
- **IPsec VPN SPA**
- **Network Analysis Module**
- **Traffic Anomaly Detector Module**
- **Anomaly Guard Module**



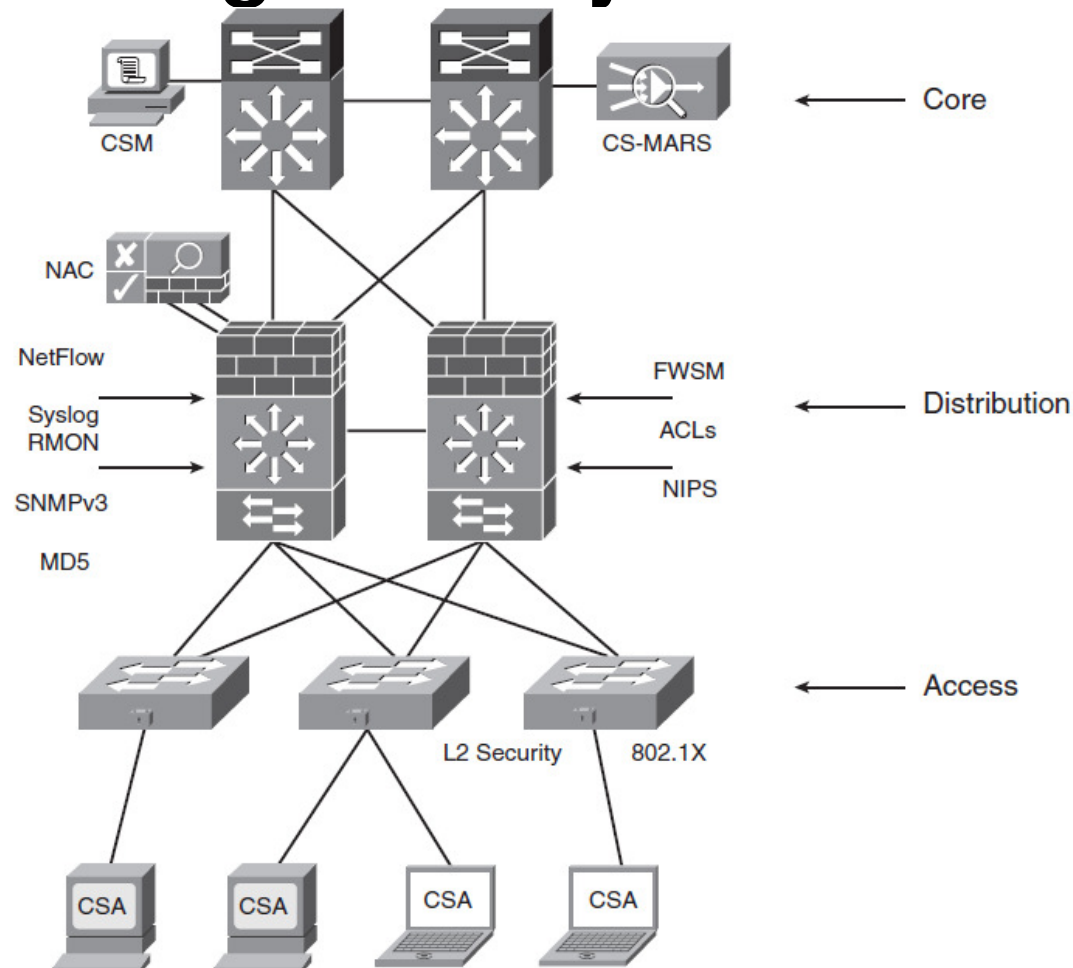
# Chapter 14

## Implementing Security in the Campus

- **Identity and access control** — 802.1X, NAC, ACLs, and firewalls
- **Threat detection and mitigation** — NetFlow, Syslog, SNMP, RMON, CS-MARS, NIPS, and HIPS
- **Infrastructure protection** — AAA, TACACS, RADIUS, SSH, SNMP v3, IGP/EGP MD5
- **Security management** — CSM, CS-MARS, ACS

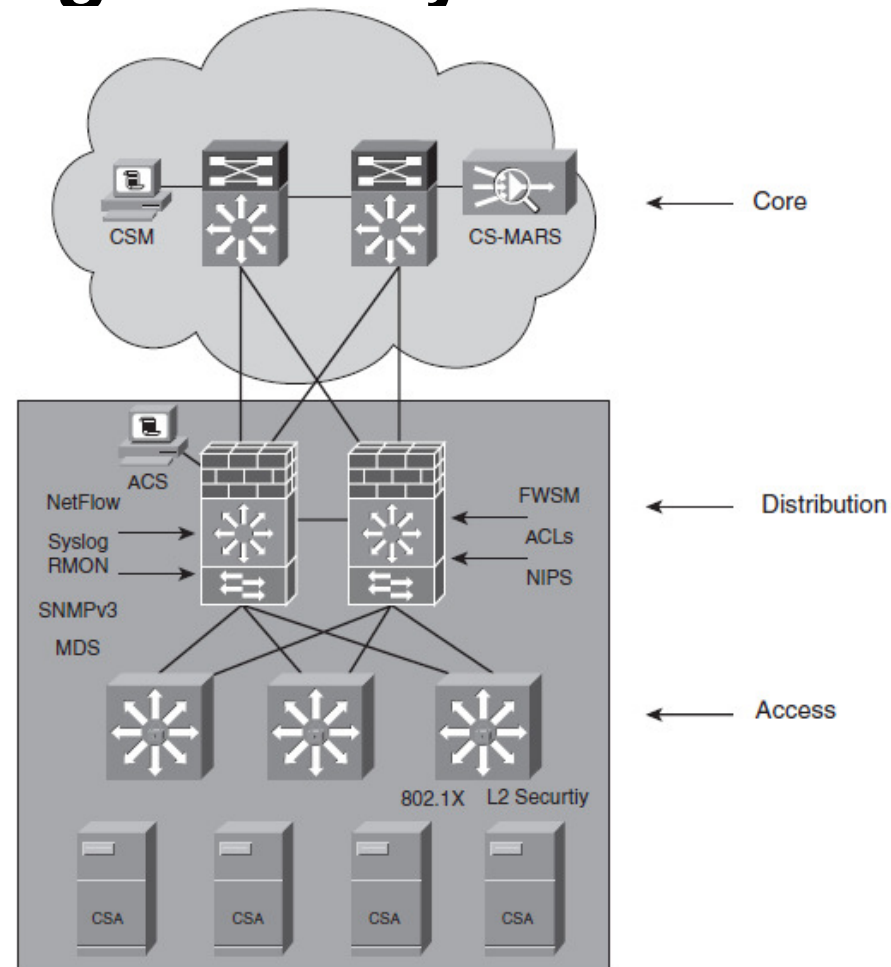
# Chapter 14

## Implementing Security in the Campus



# Chapter 14

## Implementing Security in the Data Center





# Chapter 14



?