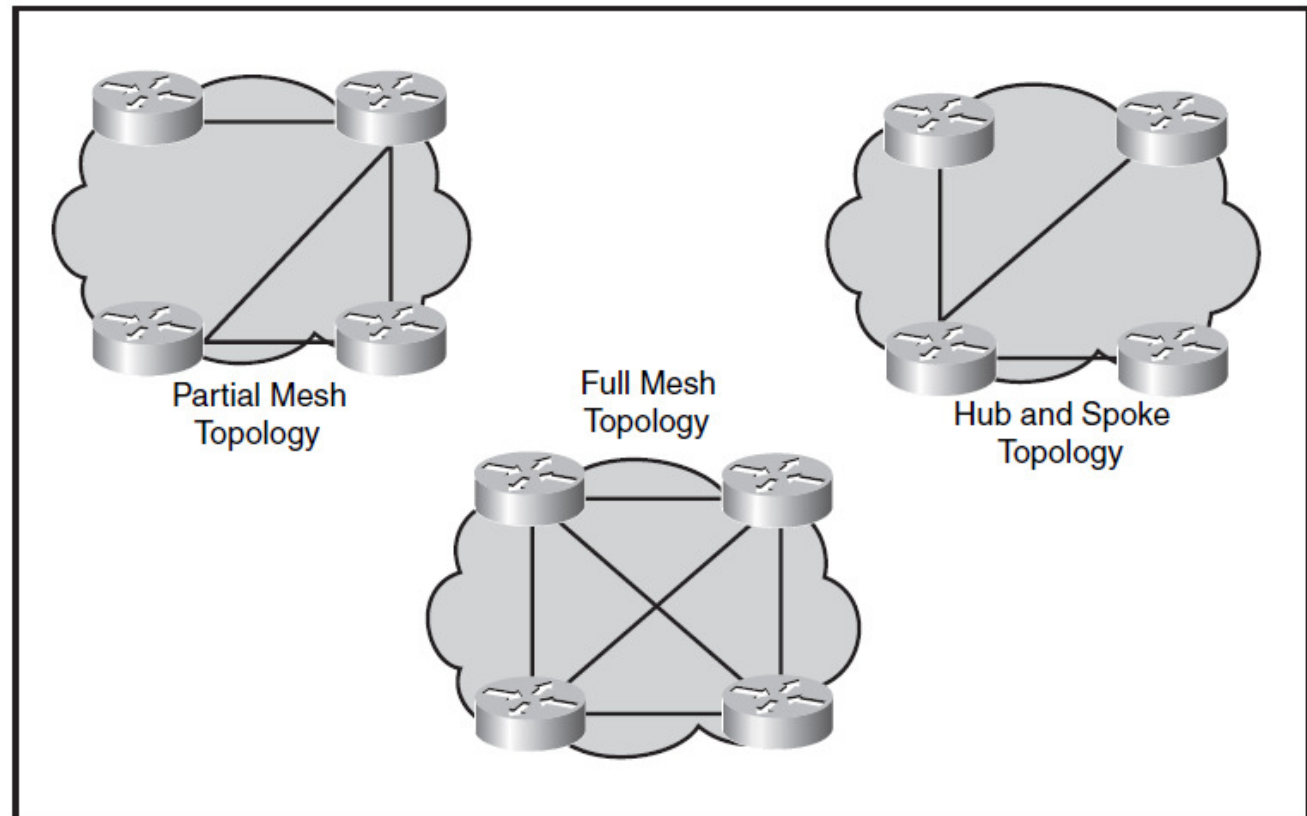


# Chapter 6

## WAN Topologies

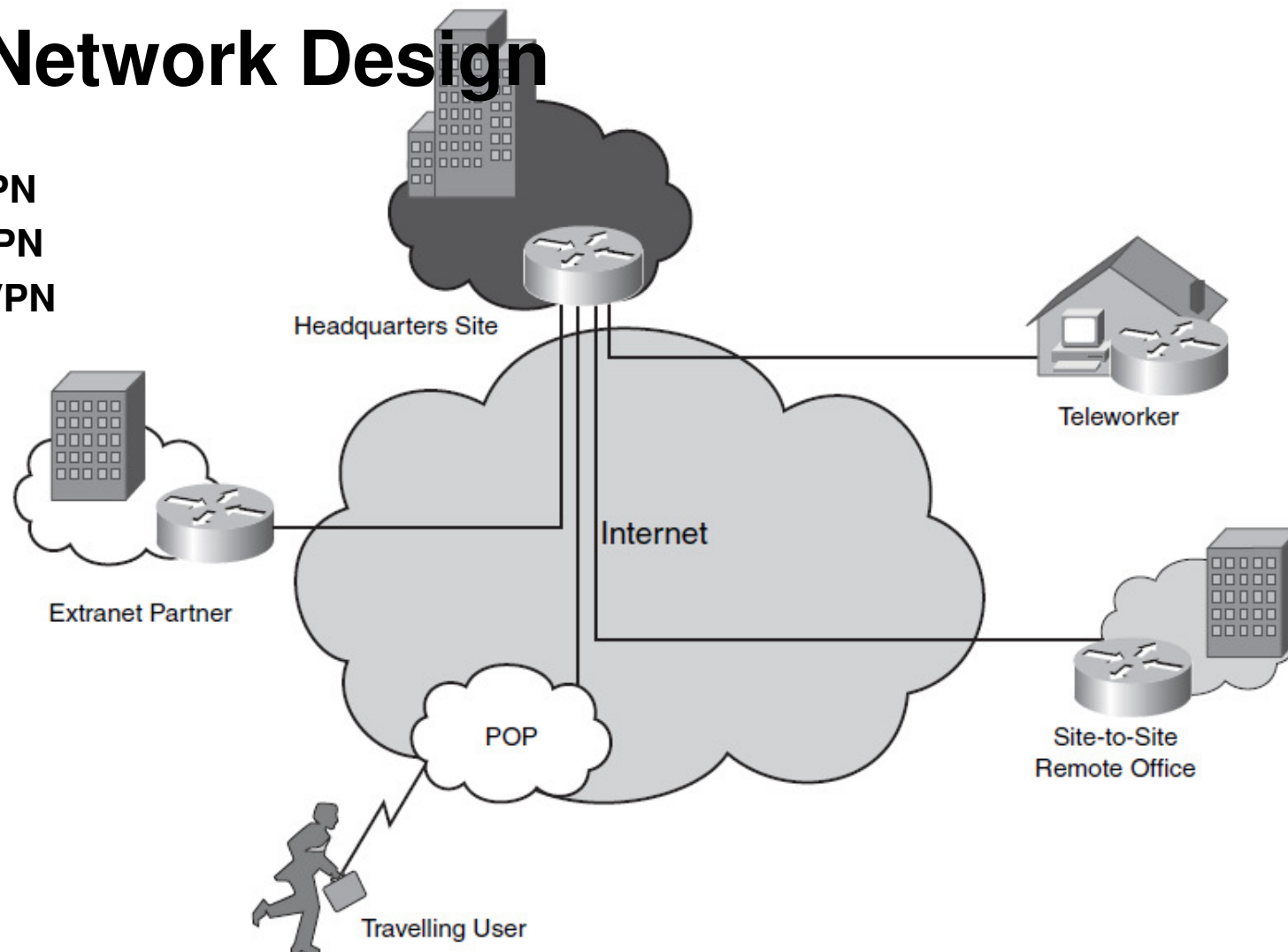
- Hub-and-Spoke Topology
- Full-Mesh Topology
- Partial-Mesh Topology



# Chapter 6

## VPN Network Design

- Access VPN
- Intranet VPN
- Extranet VPN

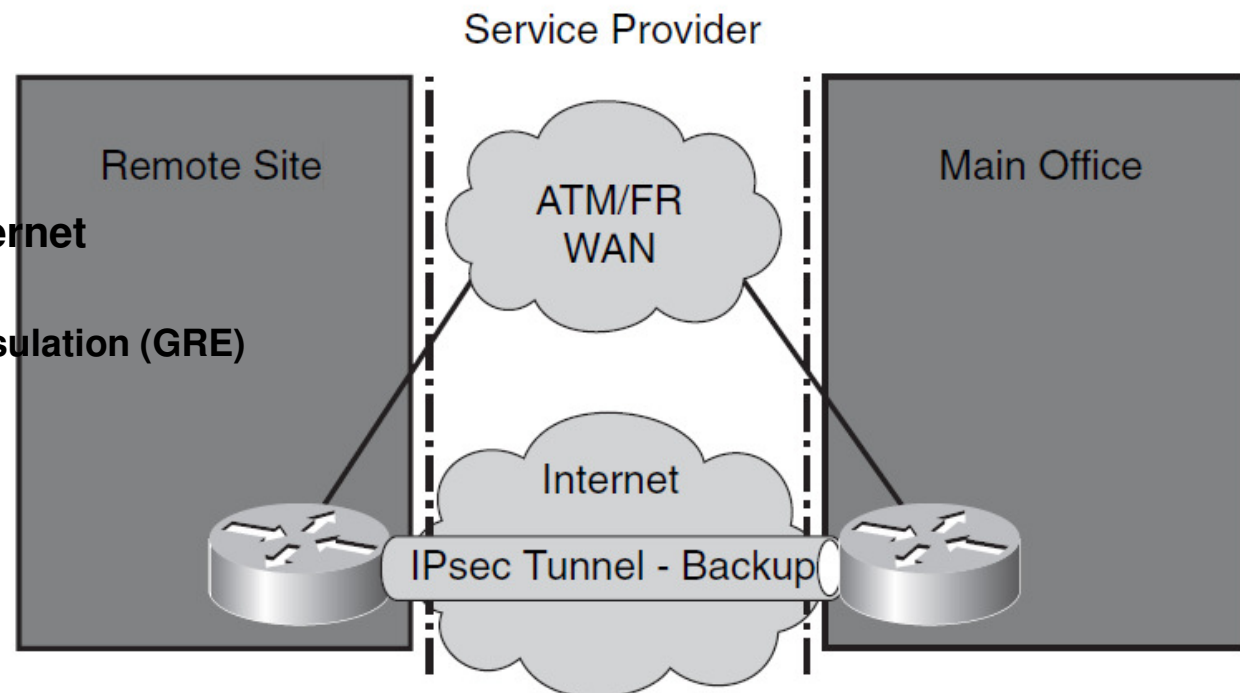


# Chapter 6

## WAN Backup Design

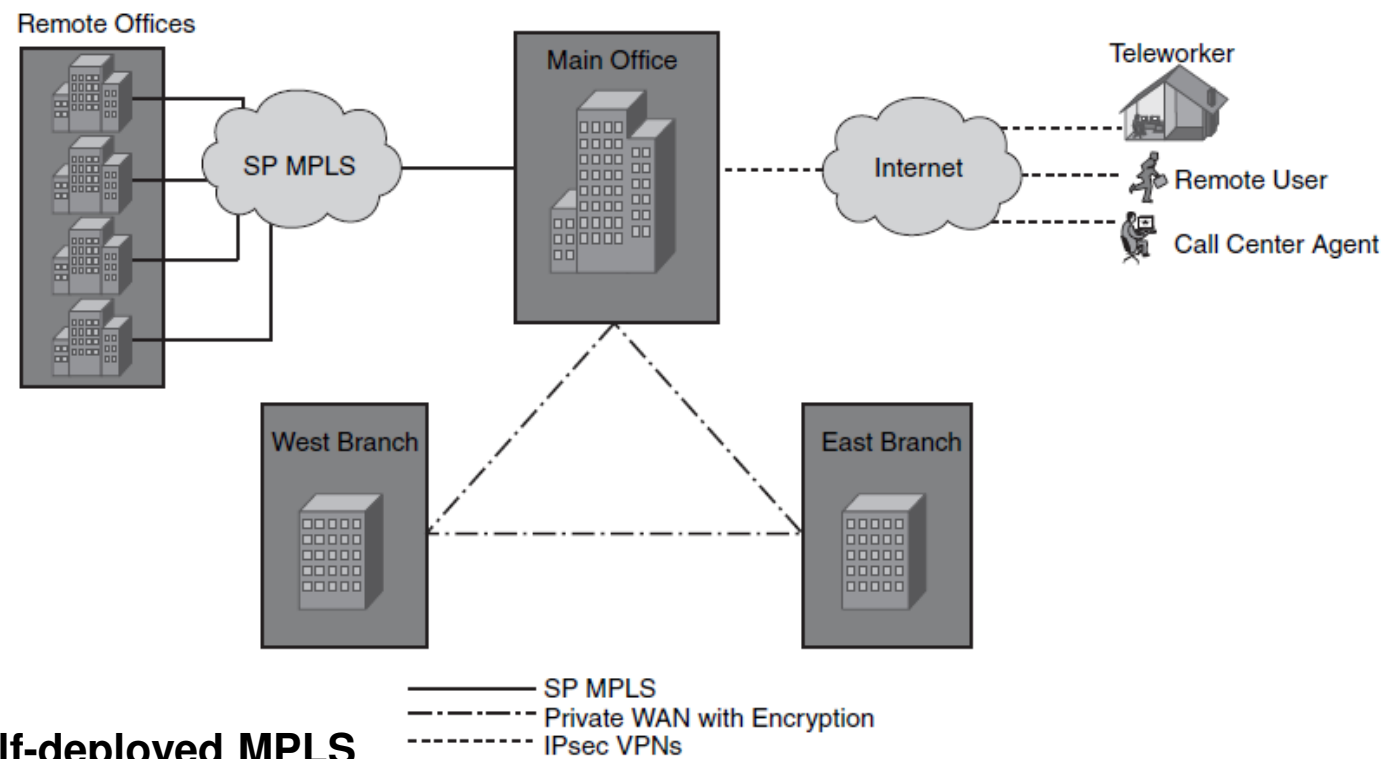
- Dial backup
- Secondary WAN link
  - Backup link
  - Additional bandwidth

- WAN Backup over the Internet
  - Layer 3 Tunneling
  - Generic Routing Encapsulation (GRE)
  - IP Security (IPsec)



# Chapter 6

## Cisco Enterprise MAN/WAN



- Private WAN
- ISP Service
- SP MPLS/IP VPN
- Private WAN with self-deployed MPLS

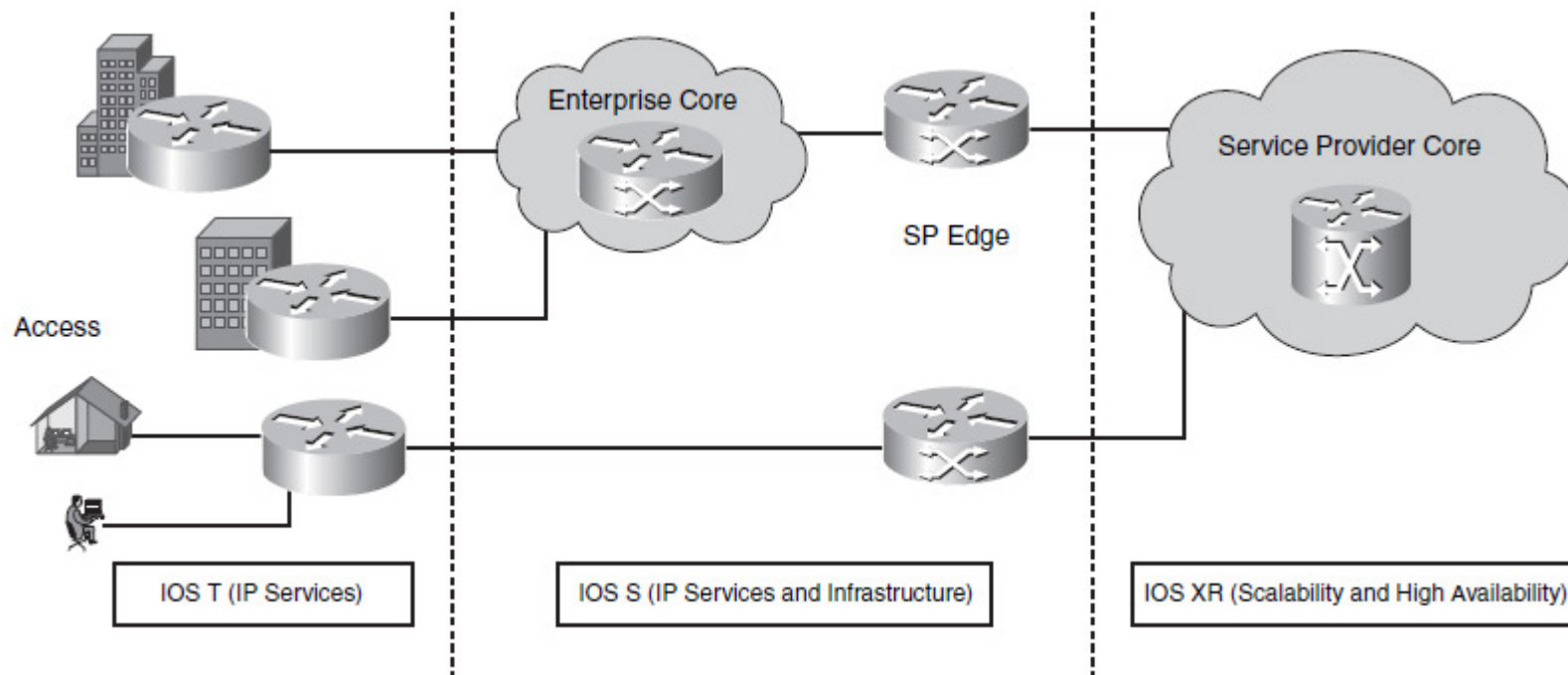
# Chapter 6

## Cisco Enterprise MAN/WAN

Characteristic	Private WAN	ISP Service	SP MPLS/ IP VPN	Private MPLS
High availability	Excellent	Good	Excellent	Excellent
Growth support	Moderate	Good	Excellent	Excellent
Security	IPsec (optional)	IPsec (mandatory)	IPsec (optional)	IPsec (optional)
Ongoing expenses	High	Low	Moderate to high	Moderate to high
Ease of management	High	Medium	Medium	High
Voice/video support	Excellent	Moderate	Excellent	Excellent
Effort to migrate from private WAN	Low	Moderate	Moderate	High

# Chapter 6

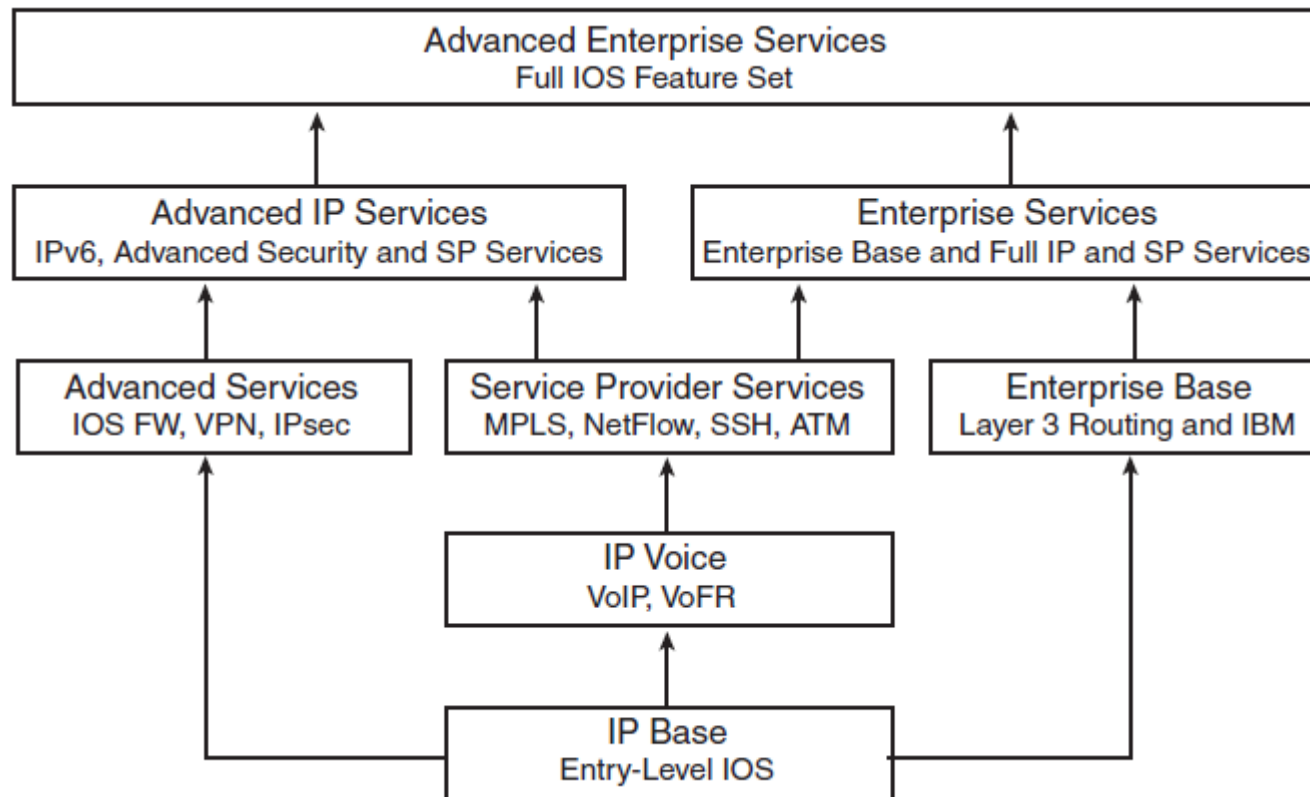
## Cisco IOS Software Families





# Chapter 6

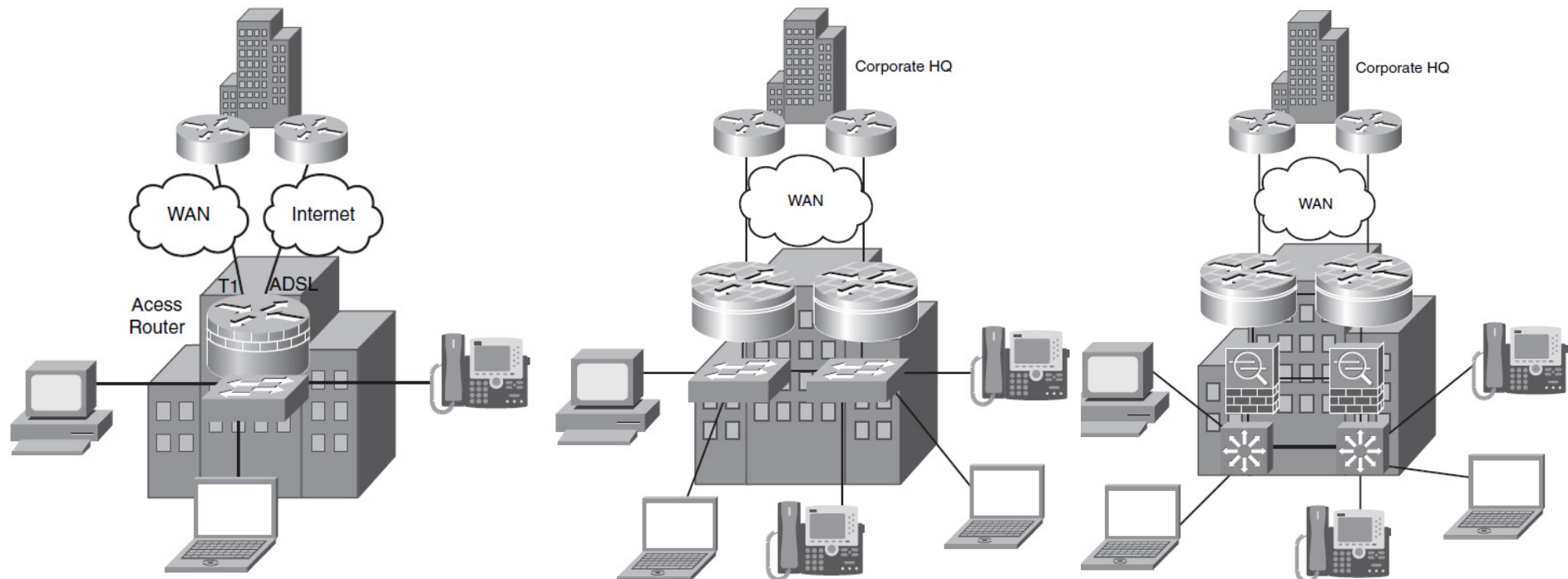
## Cisco IOS Packaging



# Chapter 6

## Enterprise Branch Architecture

- **Single-tier design**—Up to 50 users
- **Dual-tier design**—Between 50 and 100 users
- **Multi-tier design**—Between 100 and 1000 users







# Chapter 6



?