



# Printudlægning i Orcad

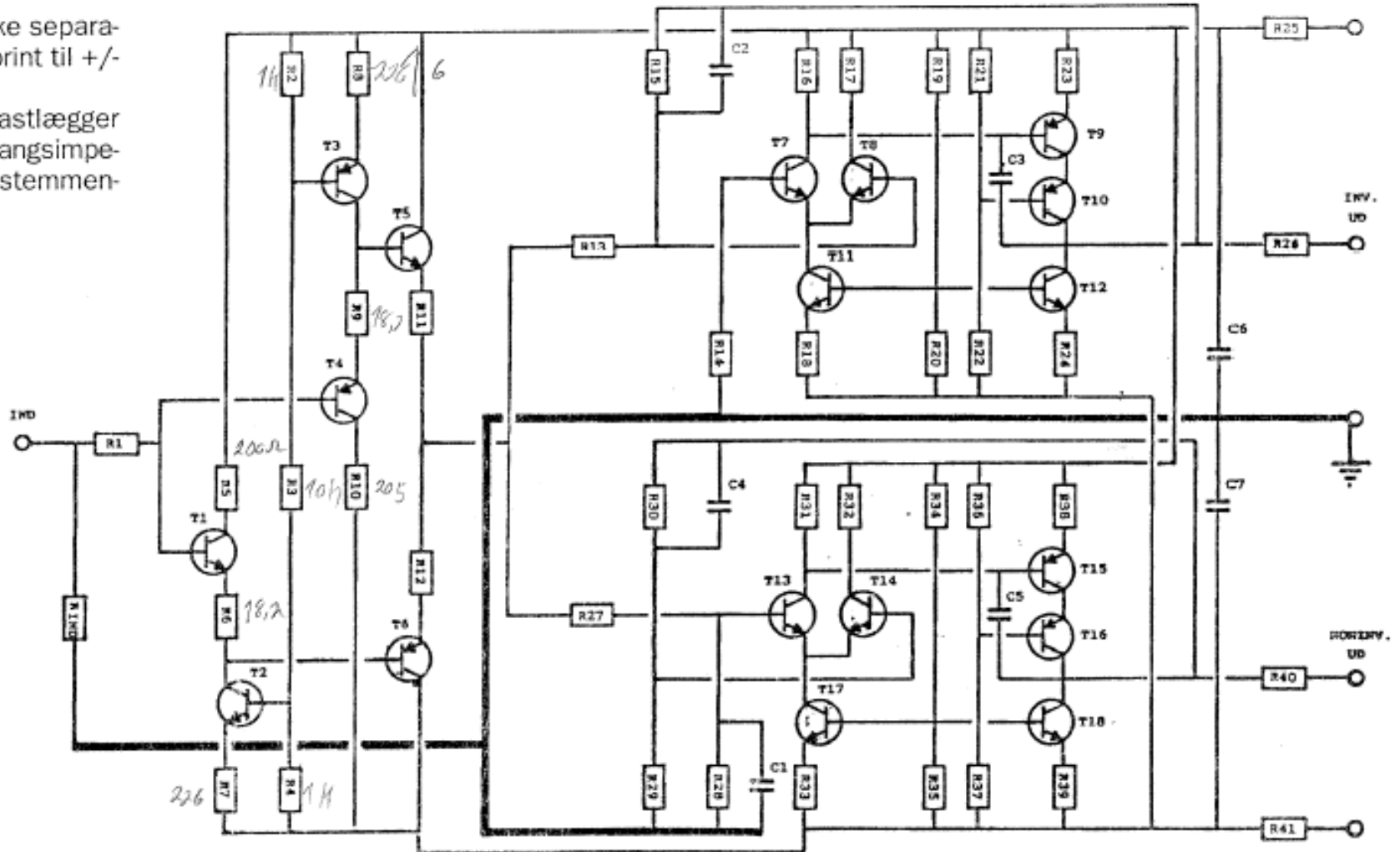
Lkaa 2010



# Line forstærker

ikke separat  
print til +/-

" fastlægger  
gængsimpedansen



# Stykliste for en kanal

## Balanceret linieforstærker, styklister for en kanal:

### Modstande, alle 1% metalfilm:

|                               |                   |
|-------------------------------|-------------------|
| R1,2,4 .....                  | 1 kohm            |
| R3,13,19,22,27,29,34,37 ..... | 10 kohm           |
| R5,10,18,33 .....             | 205 ohm ✓         |
| R6,9 .....                    | 18,2 ohm          |
| R7,8,23,38 .....              | 226 ohm ✓         |
| R11,12,25,41 .....            | 10 ohm ✓          |
| R14 .....                     | 6,65 kohm ✓       |
| R15,28,30 .....               | 20,5 kohm ✓       |
| R16,17,31,32 .....            | 1,21 kohm ✓       |
| R20,35 .....                  | 464 ohm ✓         |
| R21,36 .....                  | 1,78 kohm ✓       |
| R24,26,39,40 .....            | 100 ohm ✓         |
| Rind.....                     | valgfri, se tekst |

### Kondensatorer:

|              |                     |
|--------------|---------------------|
| C1 .....     | 6,8 pF keramisk     |
| C2,3,4 ..... | 10 pF keramisk      |
| C5 .....     | 3,3 pF keramisk     |
| C6,7 .....   | 0,1µF, 63 volt Wima |

### Transistorer:

|  |                  |
|--|------------------|
| 786 PNP T1,2,5,7,8,11,12,13,14,17,18 ✓ | 2SC 2240 Toshiba |
| 737 PNP T3,4,6,9,10,15,16 .....        | 2SA 970 Toshiba  |

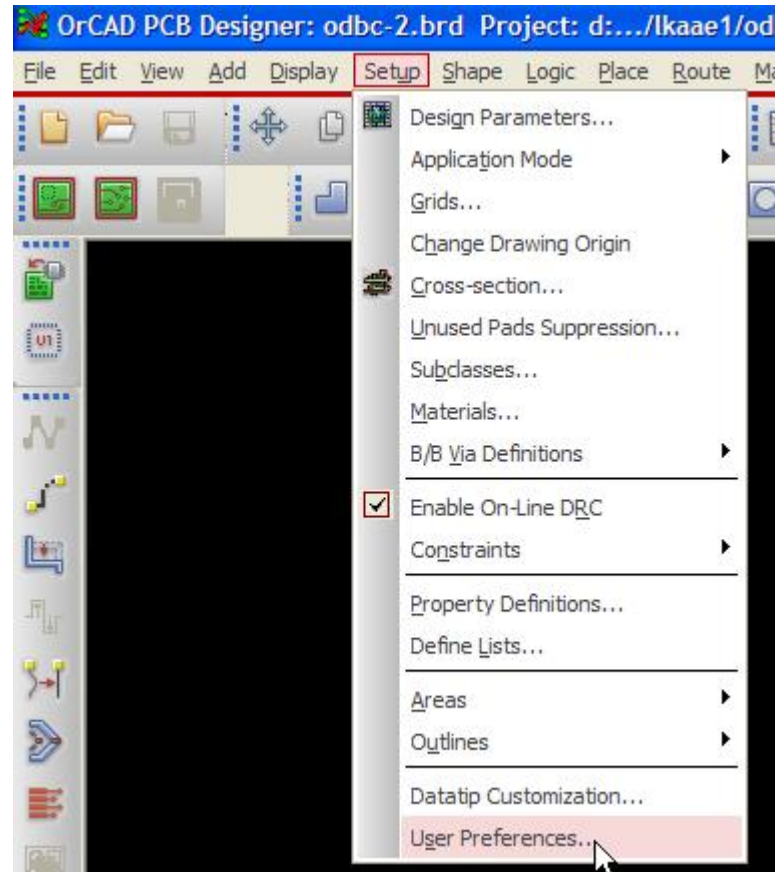
MOSA 55

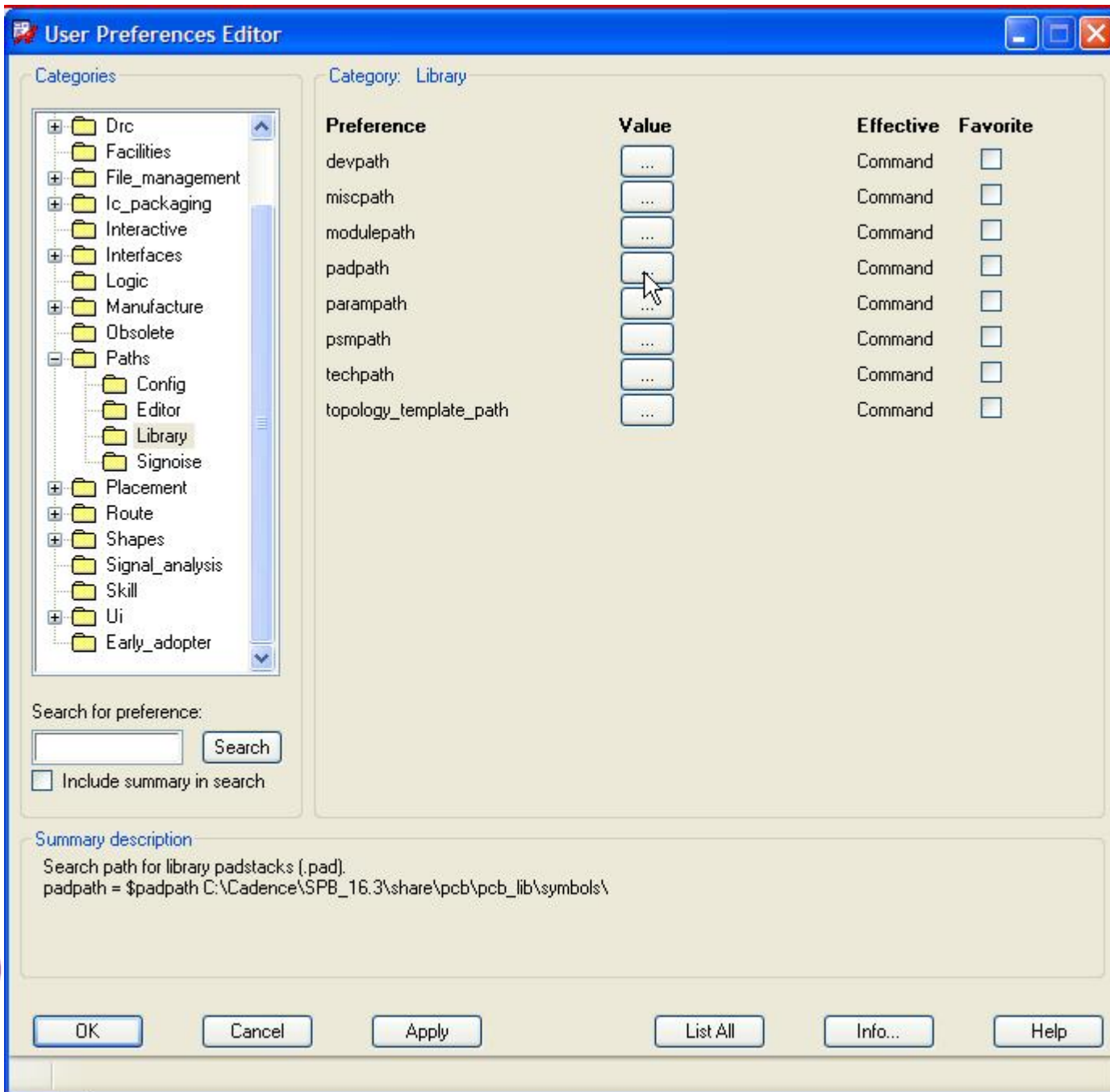
# Printudlægning i Orcad

- Tegn diagram og simulere opstilling, så I er sikker på at den virker!!
- Footprints på komponenterne!
- Opsætning af stier i PCB editoren til footprints.

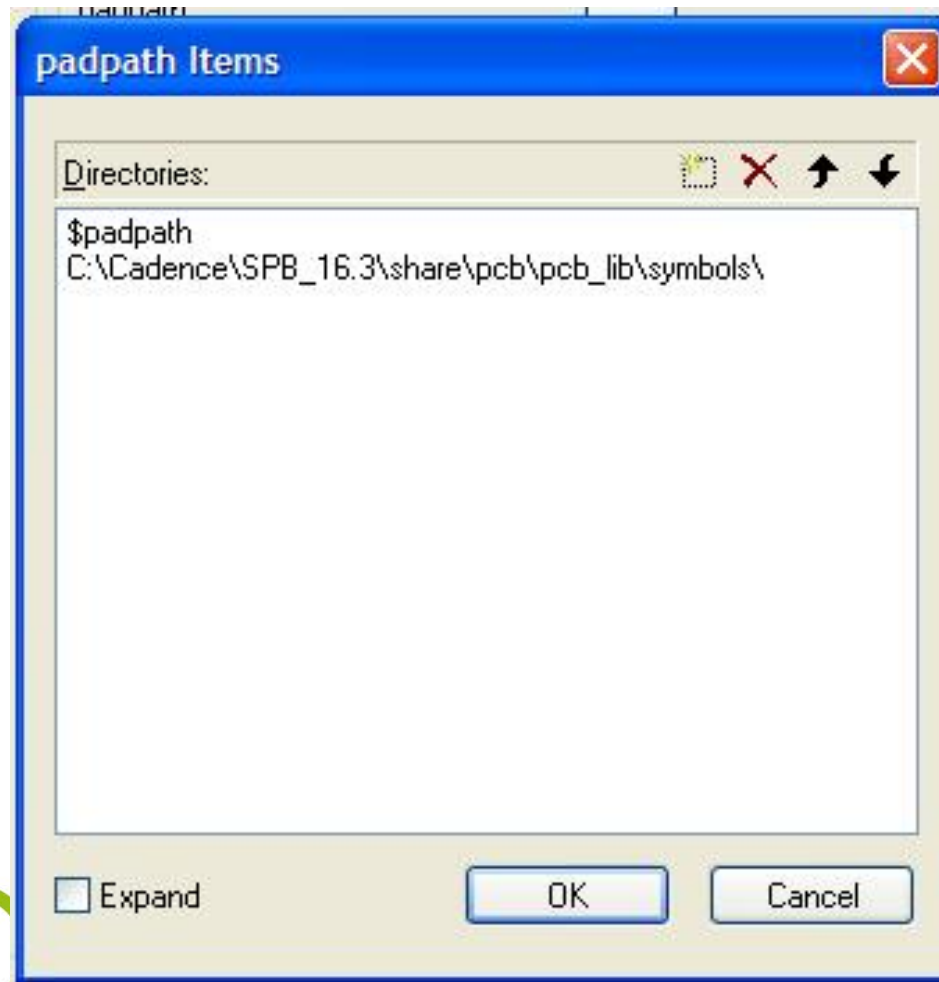


# Path til PAD og PSM

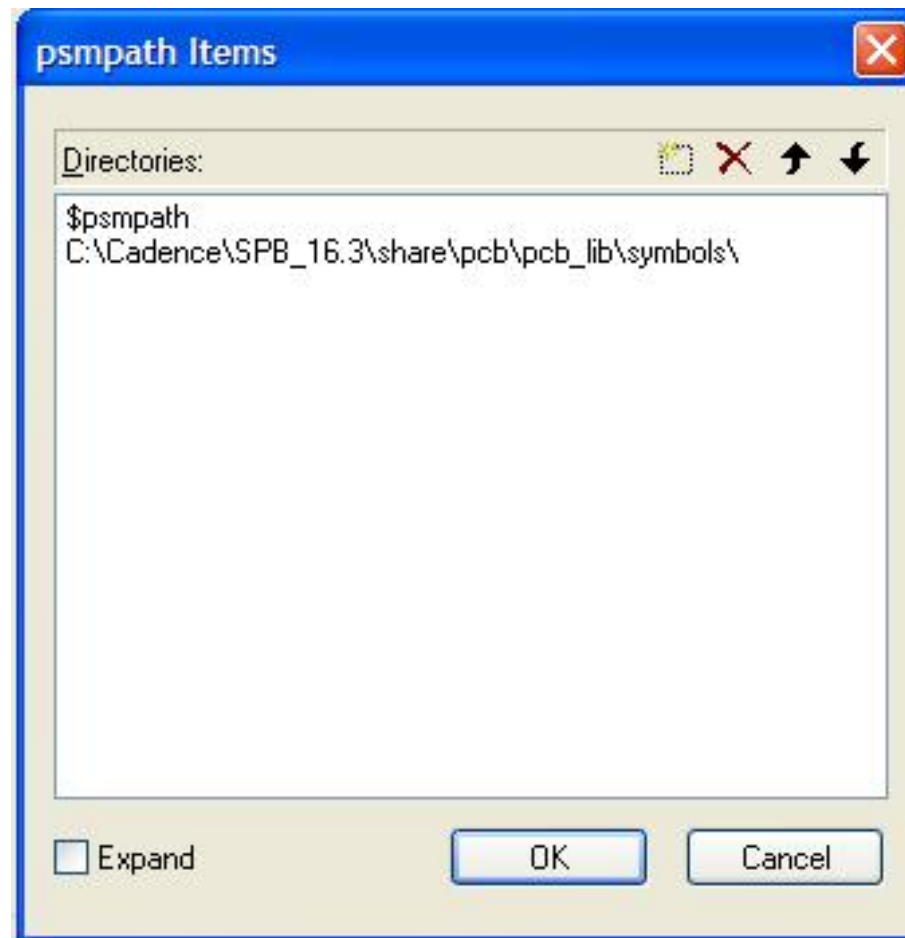




# Pad path



# PSM path





# PCB editoren

- Start PCB editor
- Lave et board (6X10 cm) med boardwizarden!
- Fra Orcad hentes komponenterne over i PCB editoren.



# Footprints

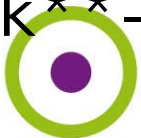
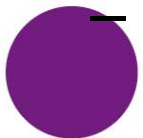


- Brug: Allegro free physical viewer til at se footprint med!
- Modstande:
  - Res300.dra
  - Res400.dra
  - Res600.dra
  - Res800.dra
  - Res1000.dra

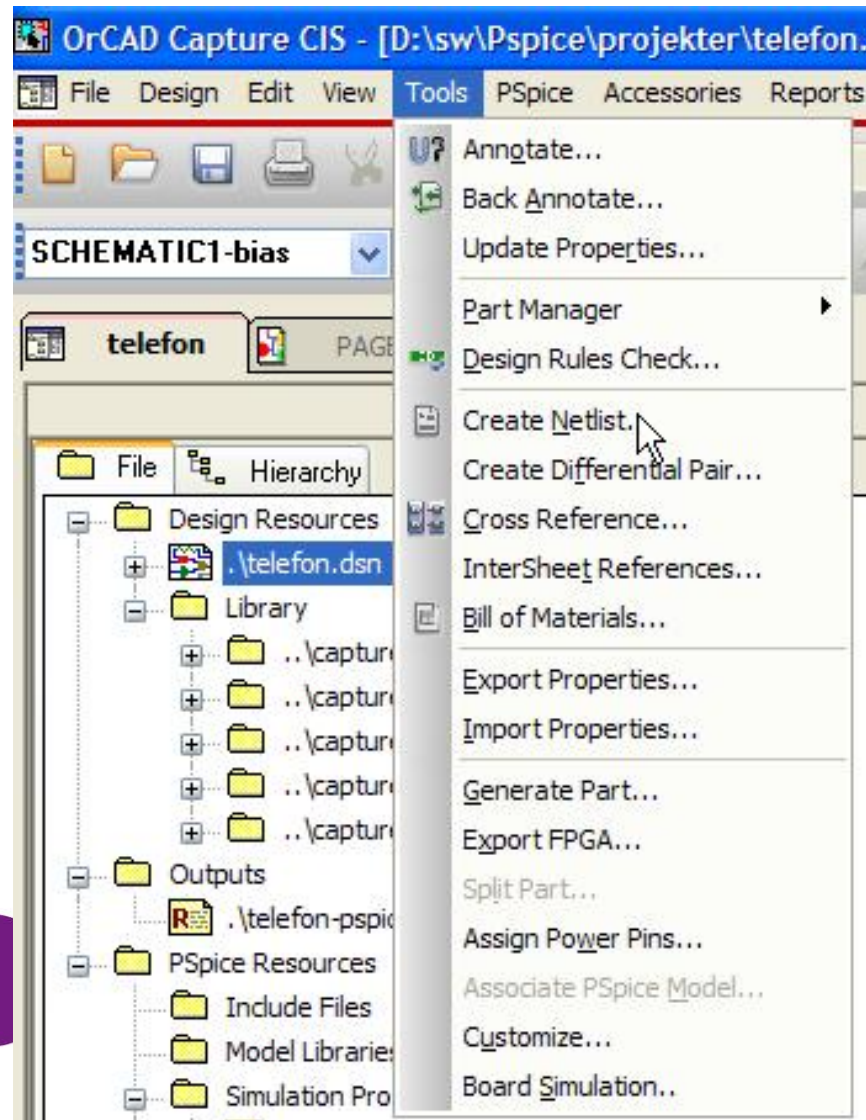


# Footprints

- Transistor
  - T092.dra
- Stik:
  - Jumper2.dra
  - Jumper3.dra
- Kondensatorer:
  - Cap196.dra
  - Cap300.dra
  - Cap400.dra
  - Cap600.dra
  - Ck\*\* -10pf.dra



# Fra Orcad startes PCB op!



# Board lægges ind i Input Board

