

Start af blandet **schematic** og **vhdl** projekt i Quartus II
Med schematic capture som top level.

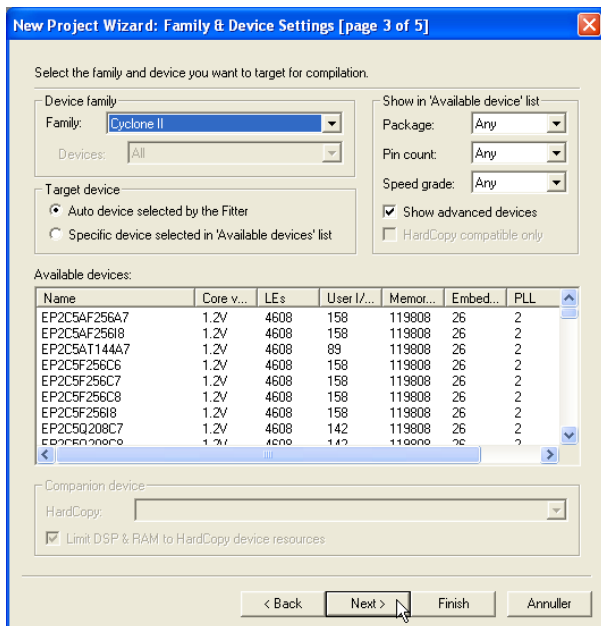
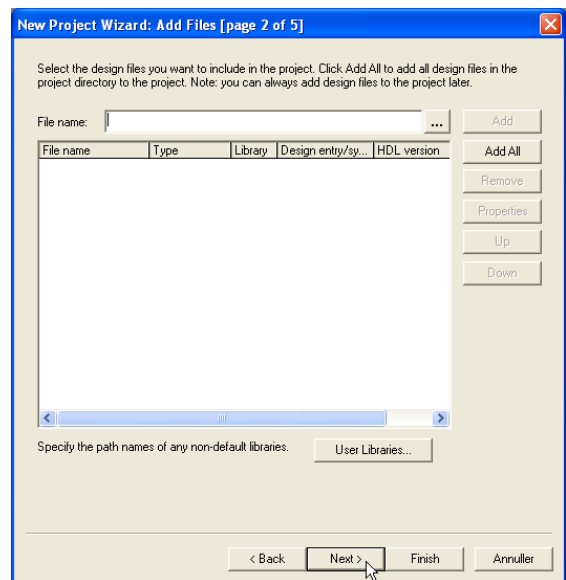
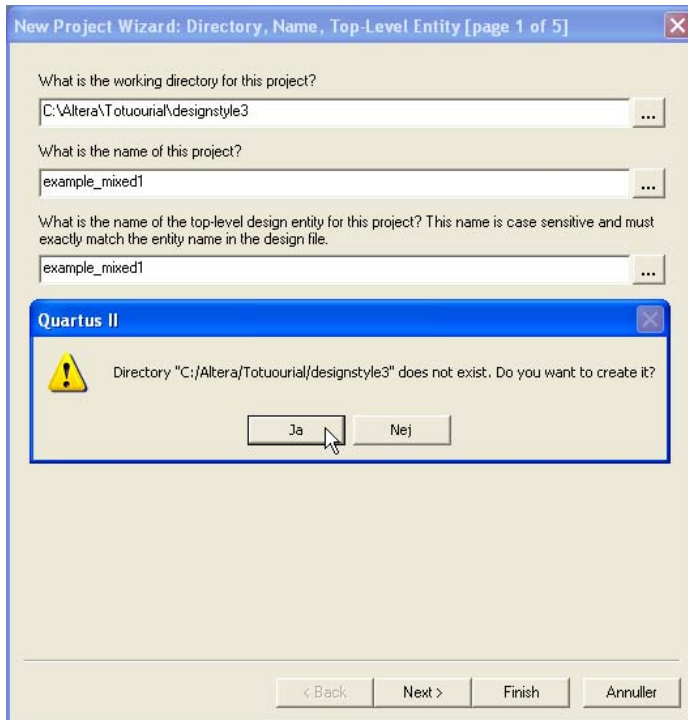
Det følgende er ikke fremstillet som en brugsanvisning der gennemgår alle de muligheder der er omkring oprettelse af et Start af blandet **schematic** og **vhdl** projekt i Quartus II men kun som en enkelt måde at komme i gang på. Dokumentet udleveres som en Word file til eleven således at han/hun selv kan fremstille en mere fuldstændig brugsanvisning som en del af sit portofolio.

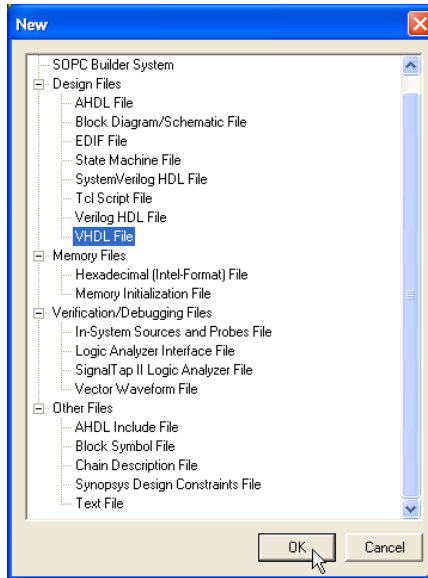
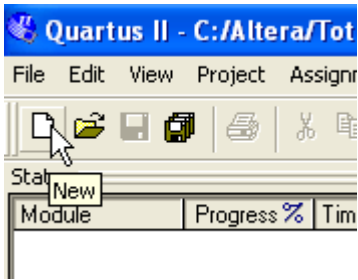
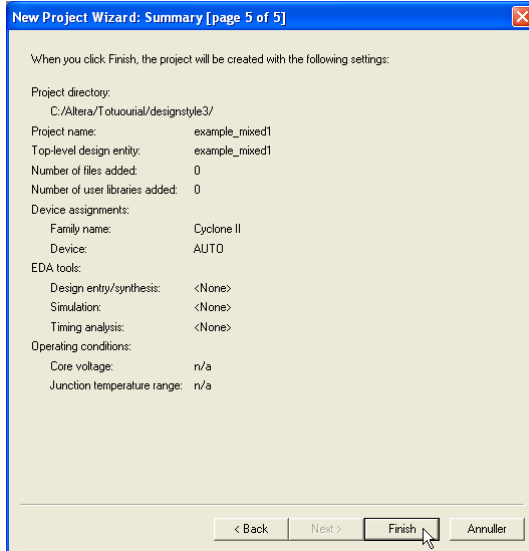
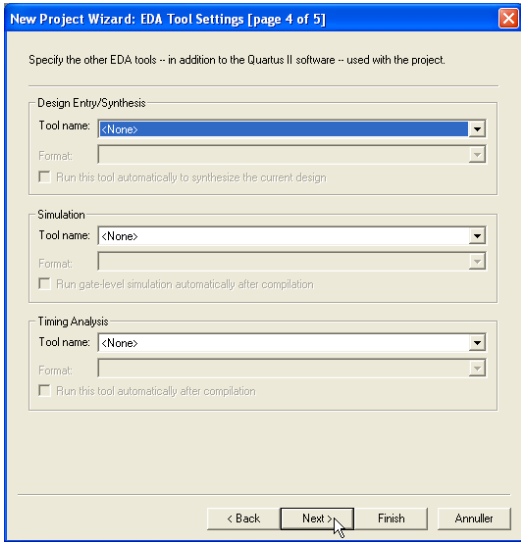
VHDL betyder: *Very high speed integrated circuit Hardware Description Language*

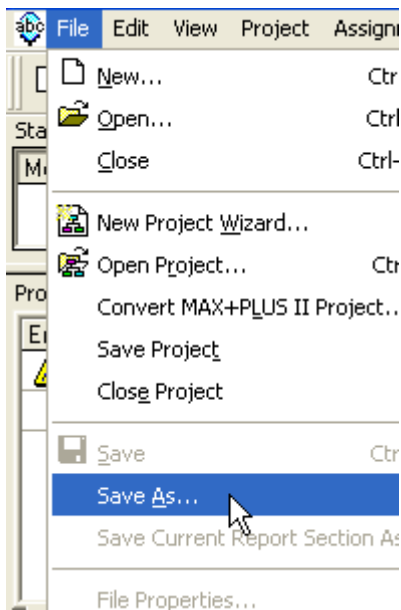
Udførelsen forudsætter at ” *Start af nyt schematic projekt i Quartus II*” og
”*Start af nyt VHDL projekt i Quartus II*”

er udført da dele derfra skal gentages i denne øvelse, og projektet ”example_schematic” indgår i dette projekt, denne øvelse stort set er uden tekst og forklaringer, sæt dem selv ind så det giver mening for dig.

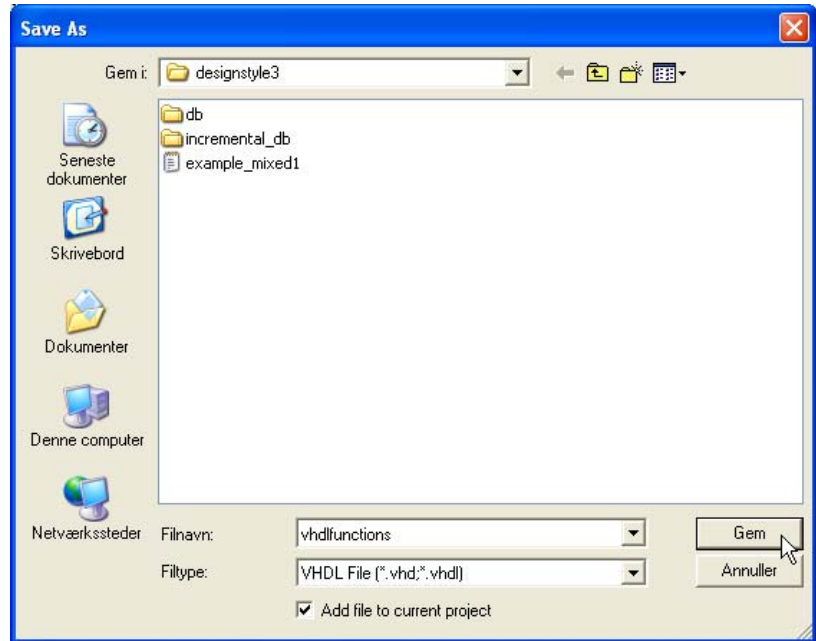
Ole Rasmussen 2010



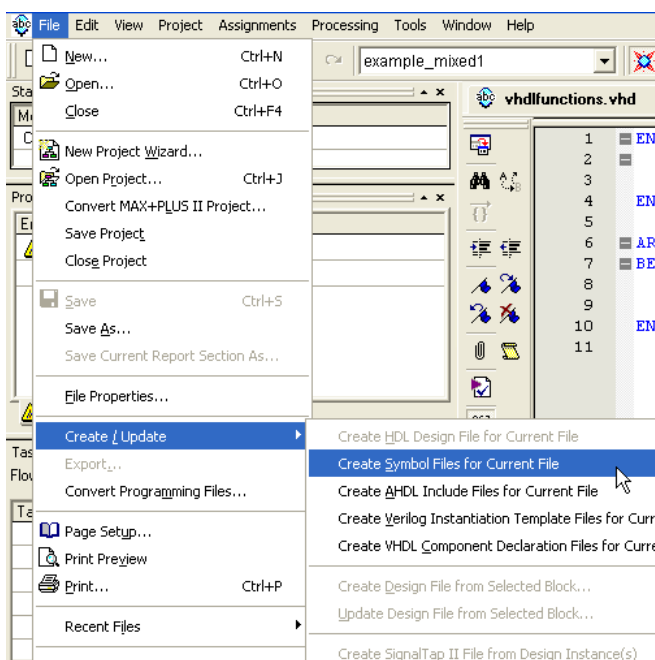




Gen filen som: **vhdlfunctions.vhd**

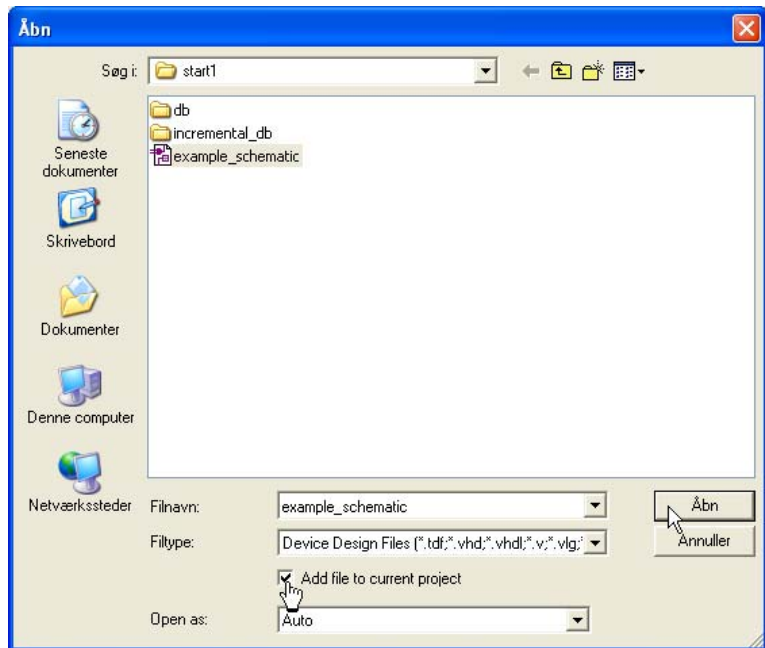
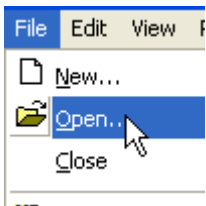


For at delkredsløbet `vhdlfunctions.vhdl` kan inkluderes i et schematic skal der genereres et symbol for filen `vhdlfunctions.vhdl` der kan importeres til blokeditoren.

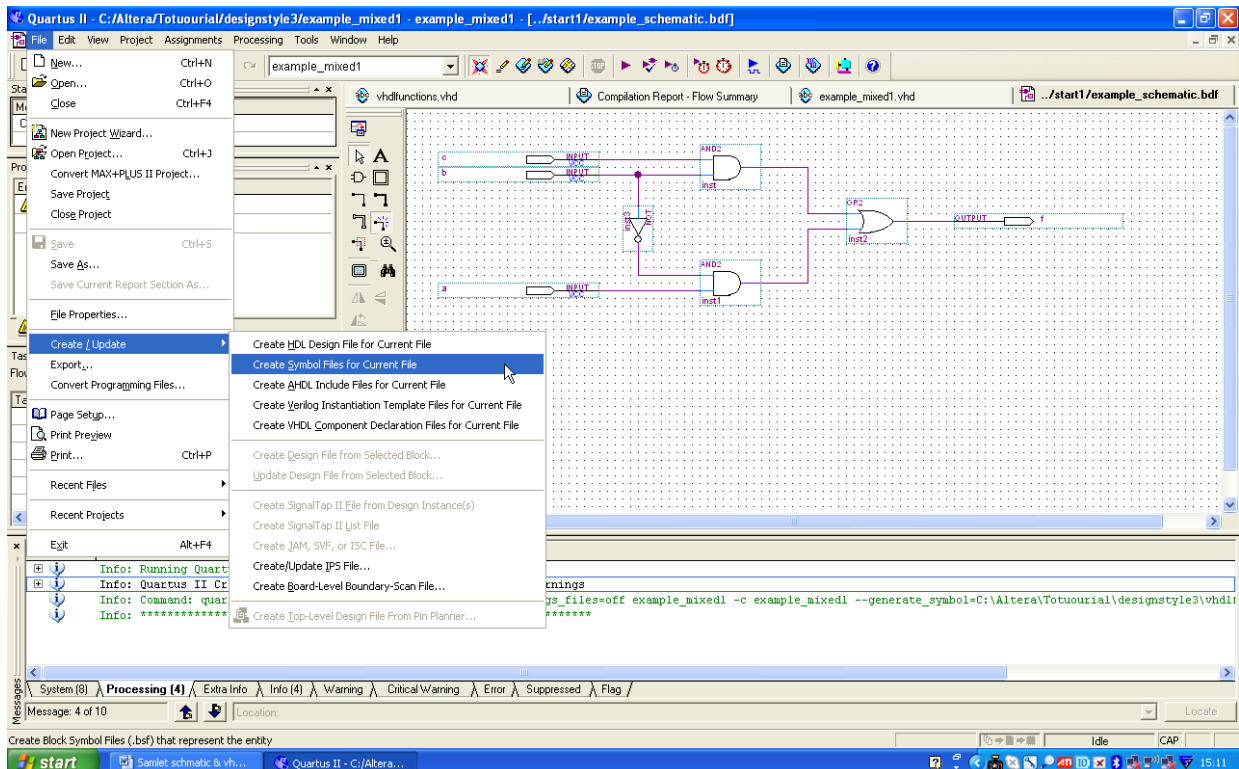


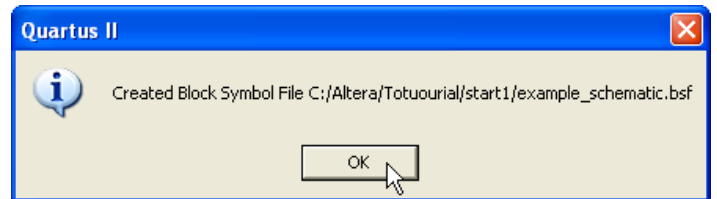
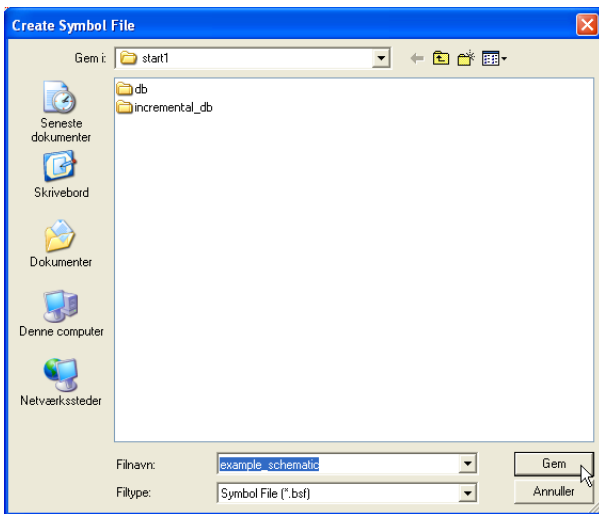
Der er nu oprettet en file "vhdlfunctions.bs"

Der skal nu også oprettes et symbol for "example schmatic"

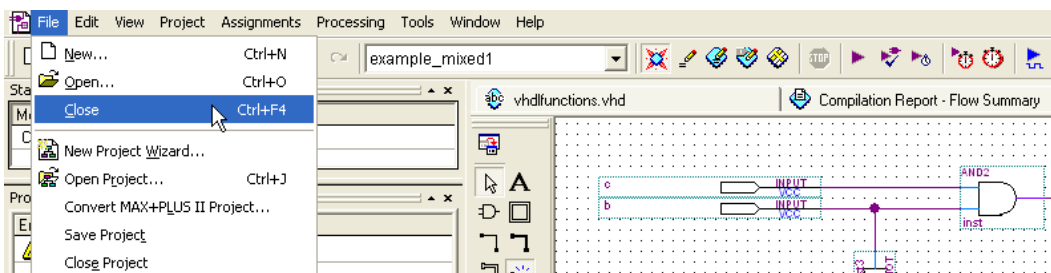


Husk "Add file to current project"

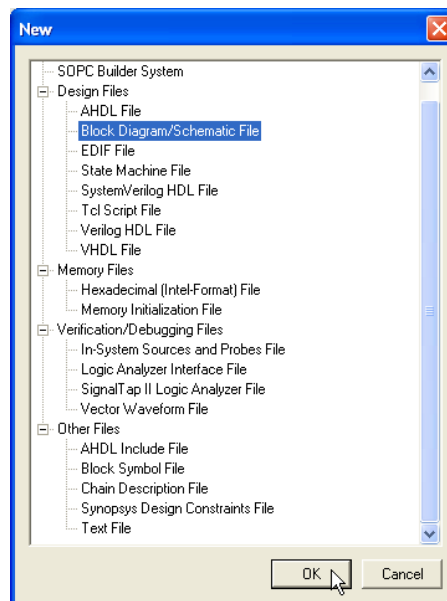
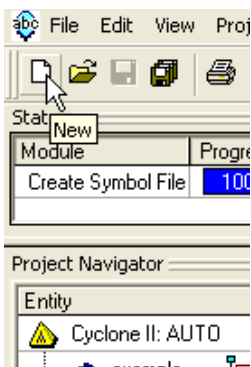


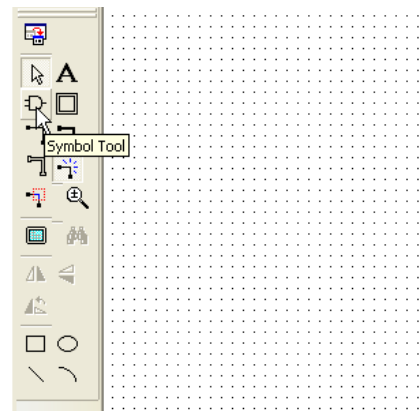
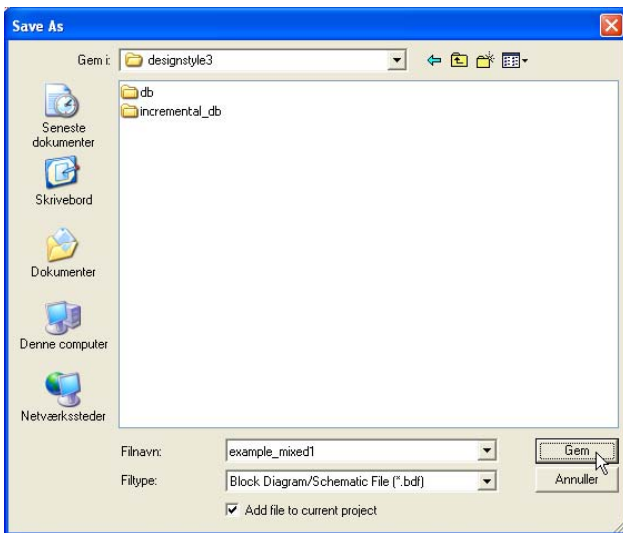
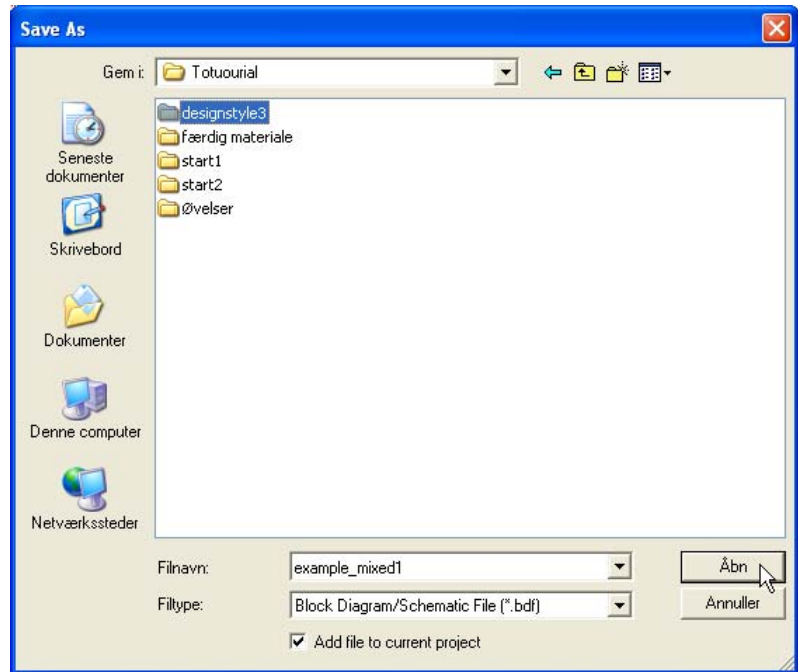
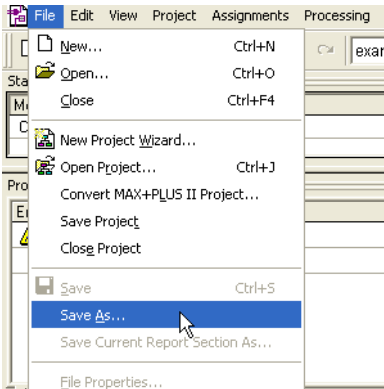


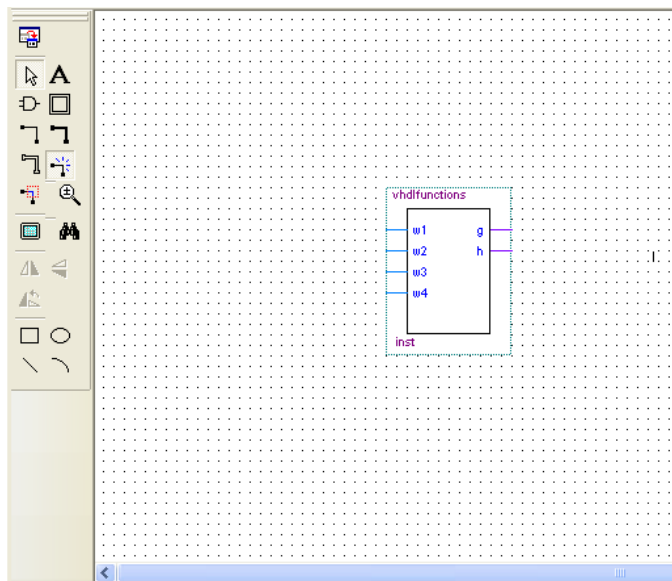
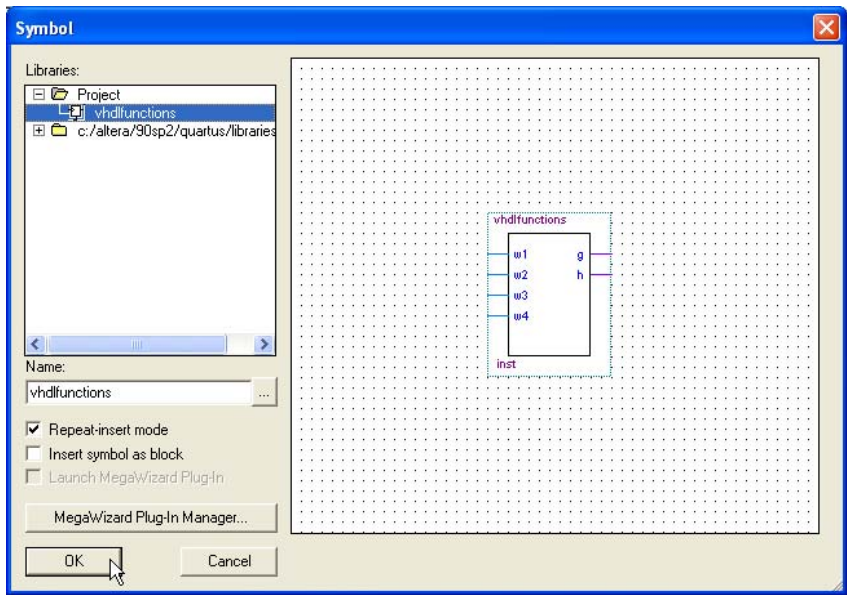
LUK FILEN START1



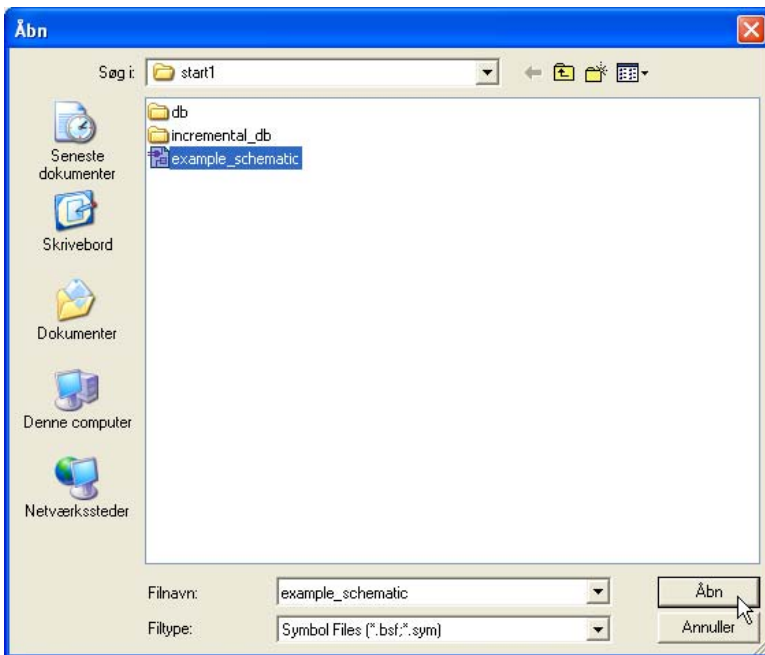
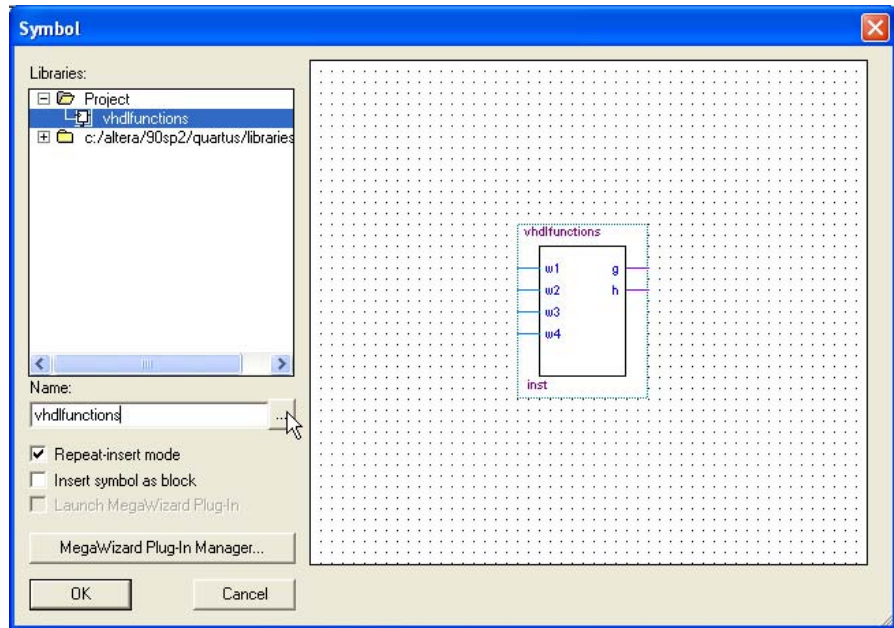
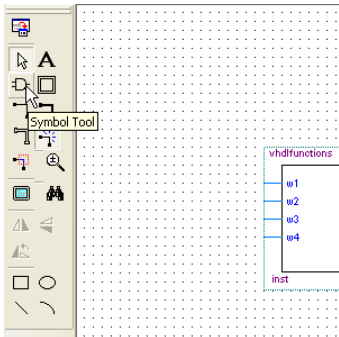
Der skal nu oprettes et toplevel schmatic til det blandede design.

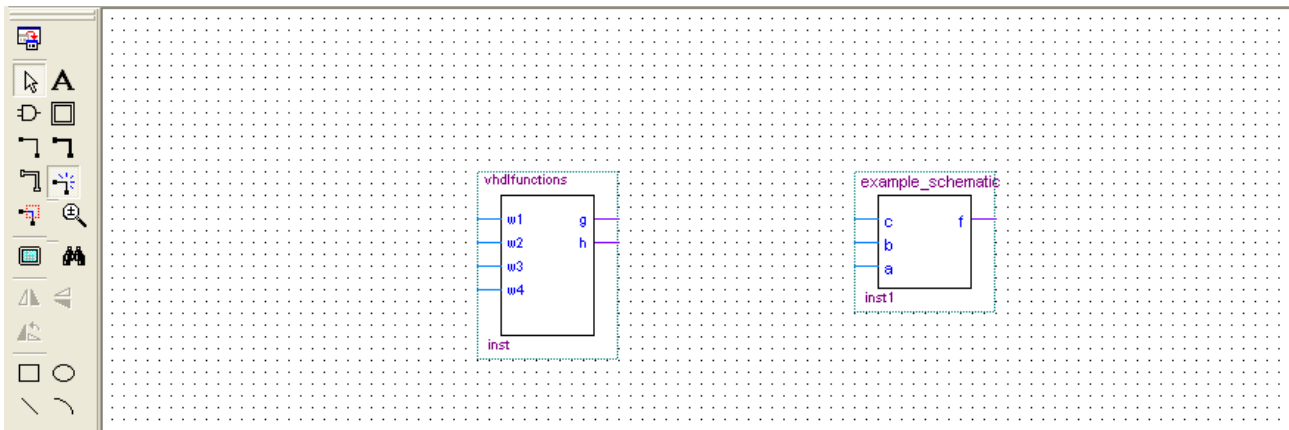
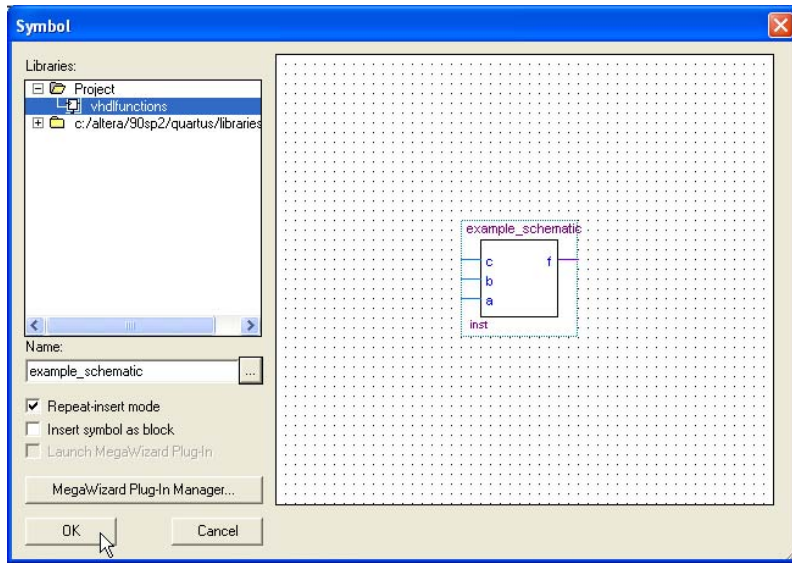




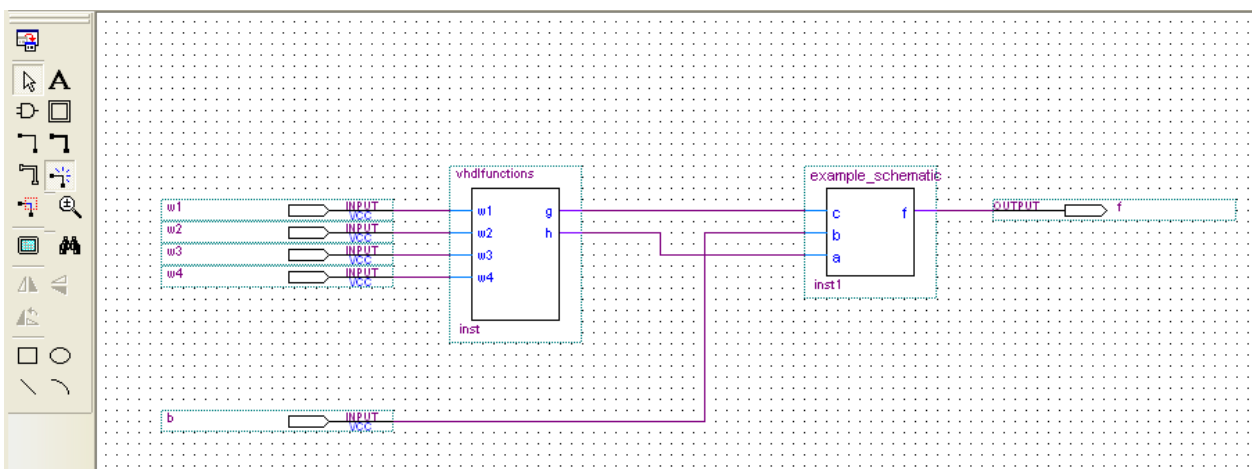


Du skal nu have fat på "example_schematic" i mappen "start1"



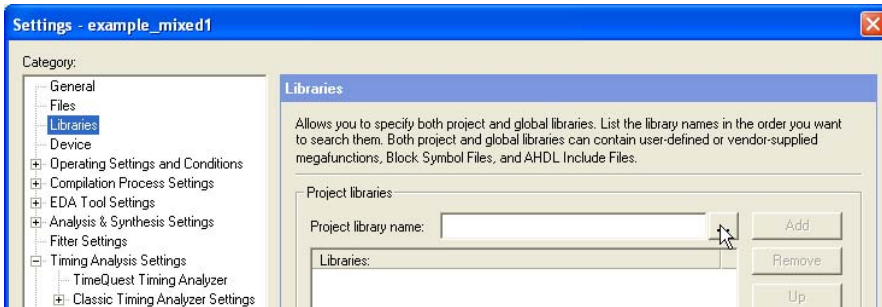


Du skal nu forbinde de to delkredsløb som nedenfor.



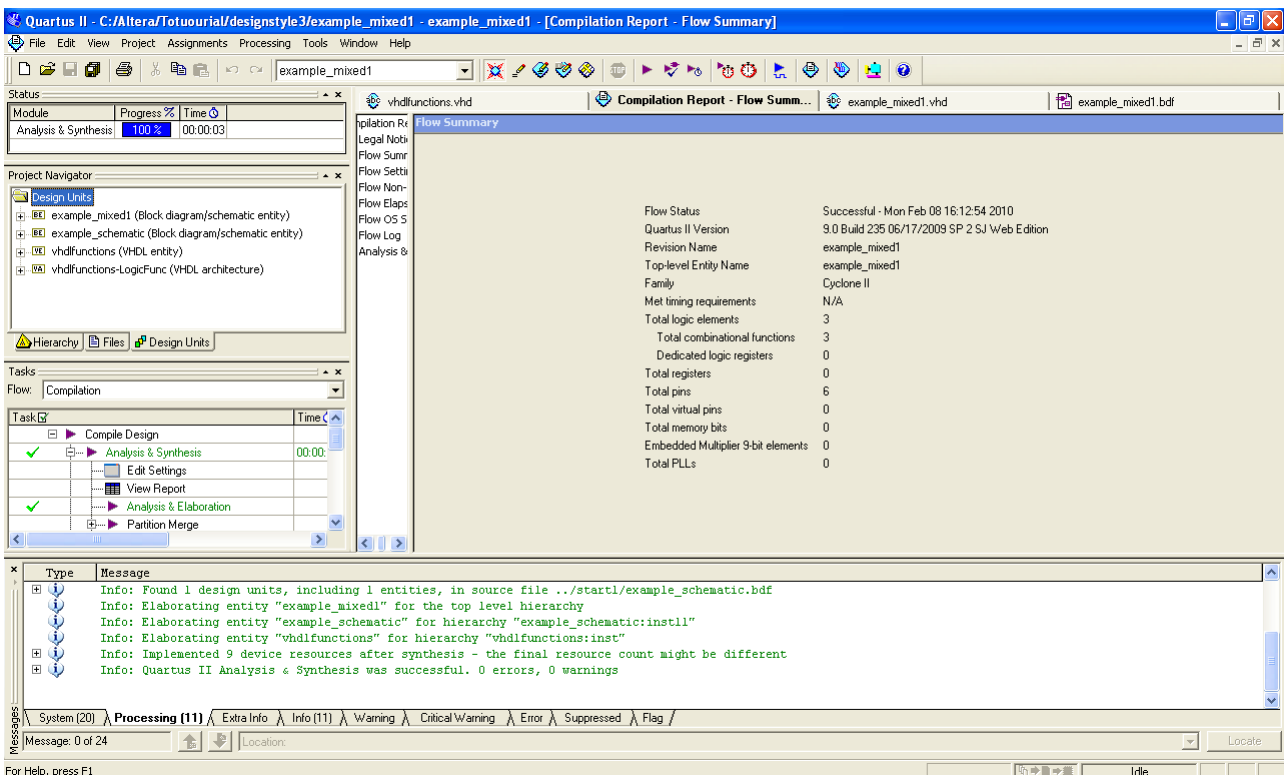
Prøv nu at starte compileren. Evt. med Ctrl+k.

Hvis der er bøvl med "eksempel_schmatic" glemte du måske "fluebenet" i "Add file to current projekt" for ca. 3 sider siden det kan du bare gå tilbage og gøre og så er den fejl rettet uden at alt skal laves om. Du kan også løse problemet i Assignments > Settings>Libraies, ude i venstre side af menuen vælger du Libraies som neden for



Og finder "Start1"
Og trykker "OK"

Senere ser det ud som neden for.



Opret test vektorer og test programmet.