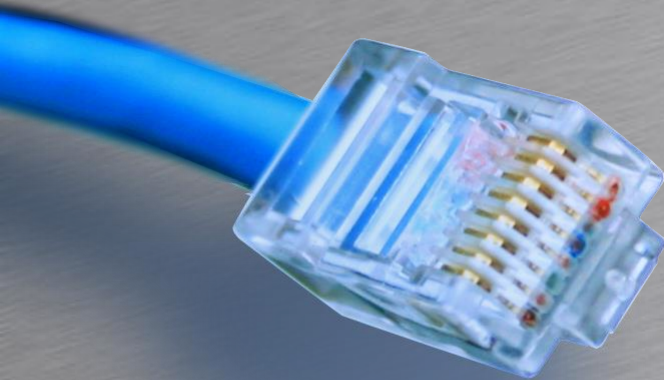


# VLANs



HOUSE OF  
TECHNOLOGY

A row of ten colored circles: blue, purple, green, blue, green, purple, green, purple, green, blue.

- en del af **mercantec**<sup>+</sup>

## Virtuelle interfaces

Rasmus Elmholt V1.0



# Vlan Tagging

- Porte på en SRX kan alt(næsten)
  - Sub-interfaces
    - 1 unit pr. VLAN
  - Routede porte
    - 1 netværk pr. interface
  - Access Porte
    - 1 VLAN pr. port(untagged)
  - Trunk Porte
    - Flere VLANs pr. port(tagged)



# Routed port

- Eksempel

```
[edit]
```

```
user1@SRX07# show interfaces
```

```
ge-0/0/0 {
```

```
    unit 0 {
```

```
        family inet {
```

```
            address 10.0.0.26/30;
```

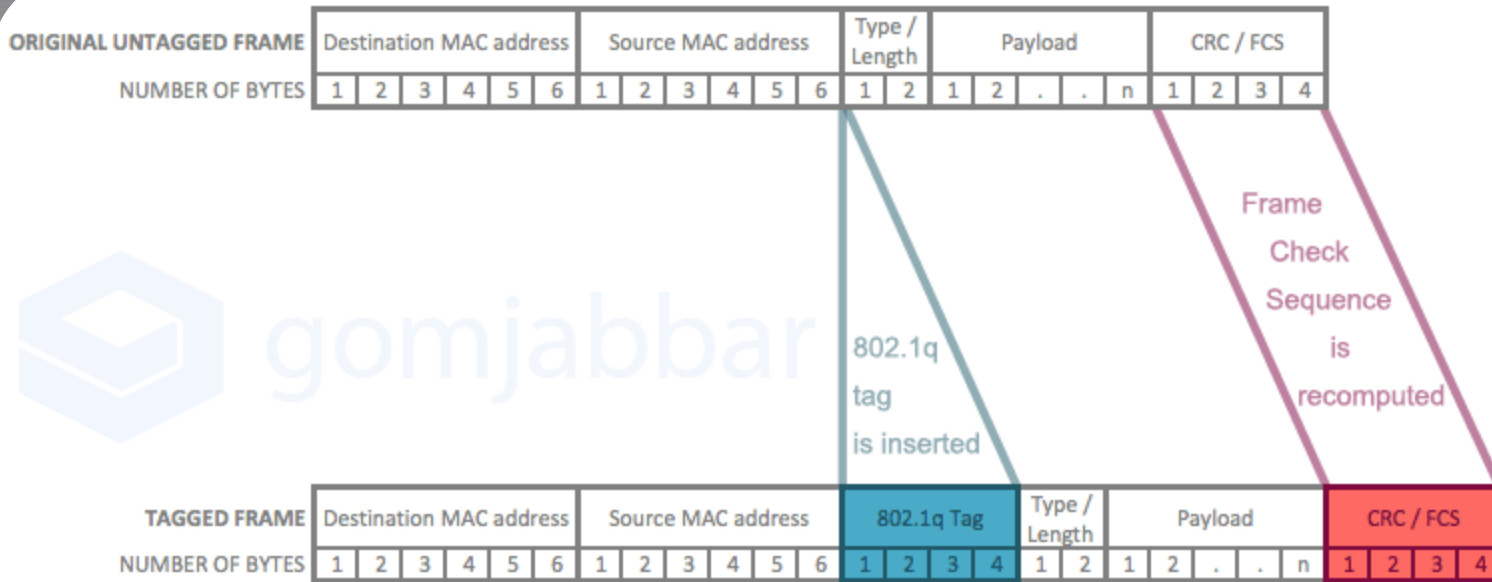
```
        }
```

```
    }
```

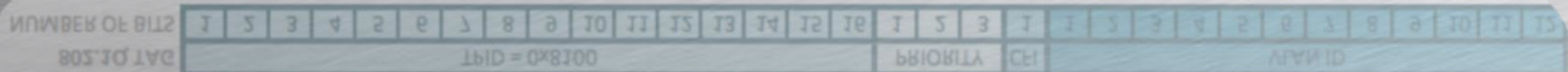
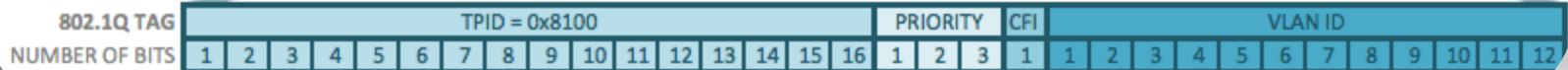
```
}
```



# 802.1Q Tagging



802.1q tag expanded view





# Sub-if

- Konfigurer interfacet til 802.1Q
  - Vlan-tagging
- Opret units for hver vlan
- Konfigurer family inet
- Kæd et unit sammen med et vlan
  - Brug gerne samme nummer



# Sub-if

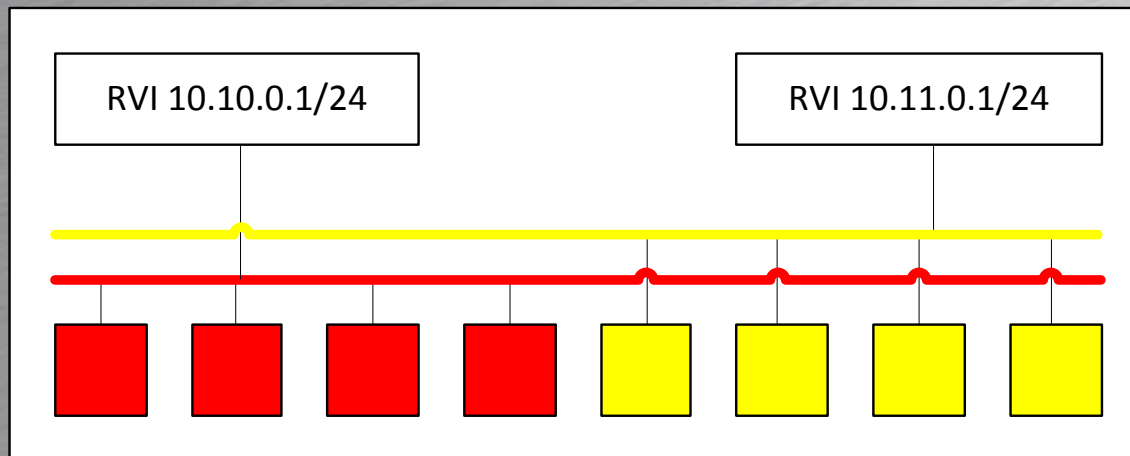
- Eksempel

```
[edit interfaces]
rael@SRX240# show
Ge-0/0/0 {
  description "Forbindelse til Kunde A";
  vlan-tagging;
  unit 10 {
    description "Intern Net";
    vlan-id 10;
    family inet {
      address 10.0.10.1/24;
    }
  }
}
```



# Vlan RVI

- Virker som SVI interfaces
- Kæder flere interfaces sammen med det samme subnet
- Router imellem interfaces





# Vlan RVI

- Opret et VLAN

```
[edit vlans]
rael@SRX240# show
vl10 {
    vlan-id 10;
}
vl11 {
    vlan-id 11;
}
vl12 {
    vlan-id 12;
}
```





# Vlan RVI

- Opret et VLAN interface

```
rael@P1# top show interfaces vlan
unit 10 {
    family inet {
        address 10.10.0.1/24;
    }
}
unit 11 {
    family inet {
        address 10.11.0.1/24;
    }
}
unit 12 {
    family inet {
        address 10.12.0.1/24;
    }
}
```



# Vlan RVI

- Opret port membership

```
fe-0/0/6 {  
    unit 0 {  
        family ethernet-switching {  
            port-mode trunk;  
            vlan {  
                members [ vl11 vl12 ];  
            }  
            nativ-vlan-id native-lan  
        }  
    }  
}
```



# Vlan RVI

- Kæd det sammen

```
[edit vlans]
rael@P1# show
vl10 {
    vlan-id 10;
    13-interface vlan.10;
}
vl11 {
    vlan-id 11;
    13-interface vlan.11;
}
vl12 {
    vlan-id 12;
    13-interface vlan.12;
}
```