

HA Deployment

High Availability

- **Spanning-Tree is the networks worst enemy**
- **Everything we do from now on is trying to avoid STP**
- **Redundant devices**
- **Flexlinks**
- **Stacking of switches**
- **Unique VLANs pr. Access Switch**
- **Routed Access**

HA Deployment

High Availability

- Calculating Availability

- Example

- 2950: MTBF=54 years
- MTTR: 4 hours
- $473040 / (473040 + 4) = 0.99999154$

$$\text{Availability} = \frac{\text{MTBF}}{\text{MTBF} + \text{MTTR}}$$

MTBF = Mean Time Between Failure
MTTR = Mean Time To Repair

HA Deployment

High Availability

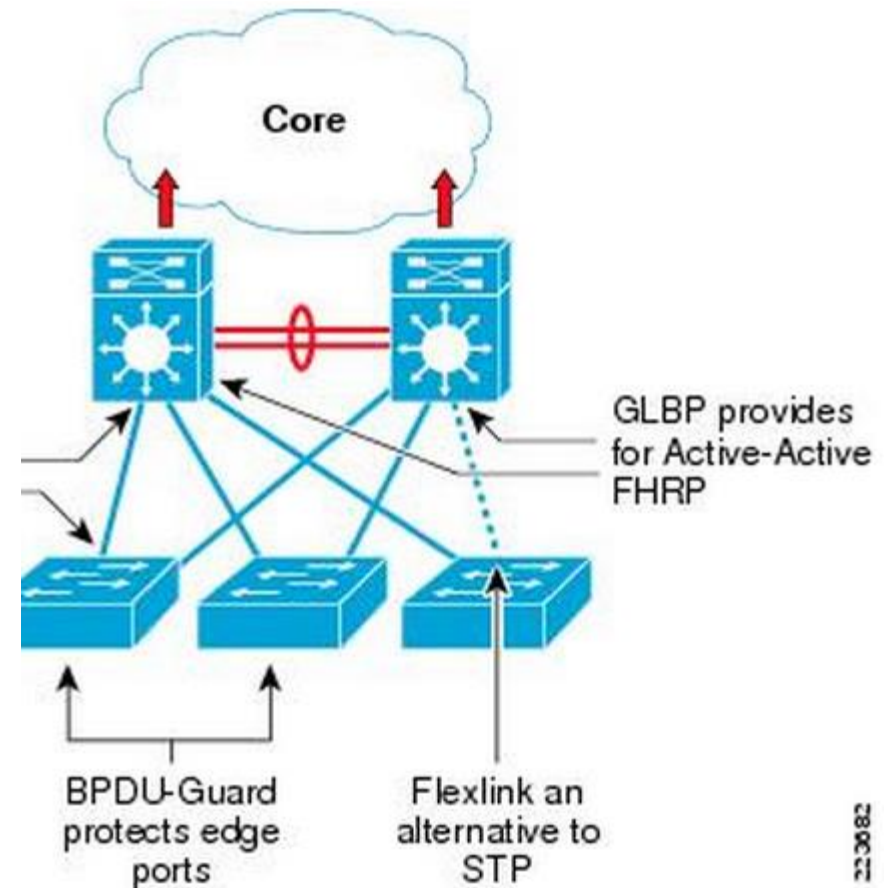
- Downtime pr. Year
- Defects per Million

Availability (Percent)	DPM	Downtime/Year (24x7x365)		
99.000	10,000	3 Days	15 Hours	36 Minutes
99.500	5,000	1 Day	19 Hours	48 Minutes
99.900	1,000		8 Hours	46 Minutes
99.950	500		4 Hours	23 Minutes
99.990	100			53 Minutes
99.999	10			5 Minutes
99.9999	1			0.5 Minutes

HA Deployment

FlexLink

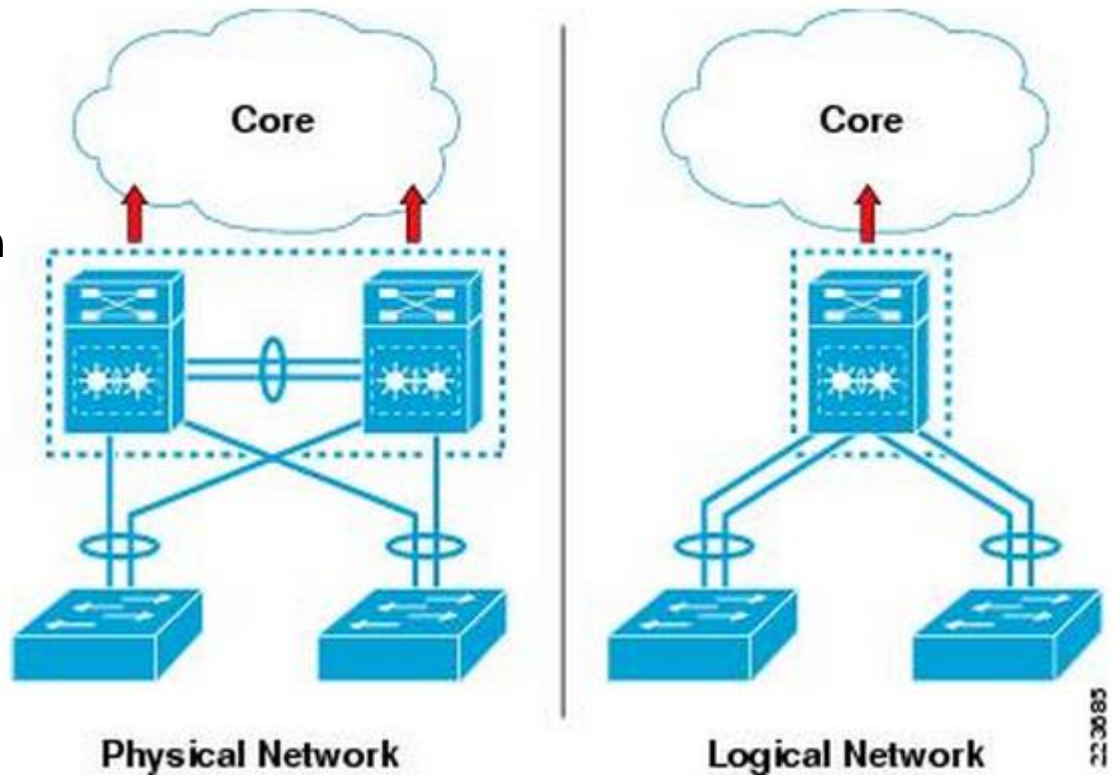
- Disabling spanning tree by only have one active link at a time.
- Configure a backup link for every active link
- Only changes when active link goes down!



HA Deployment

Virtual Chassis

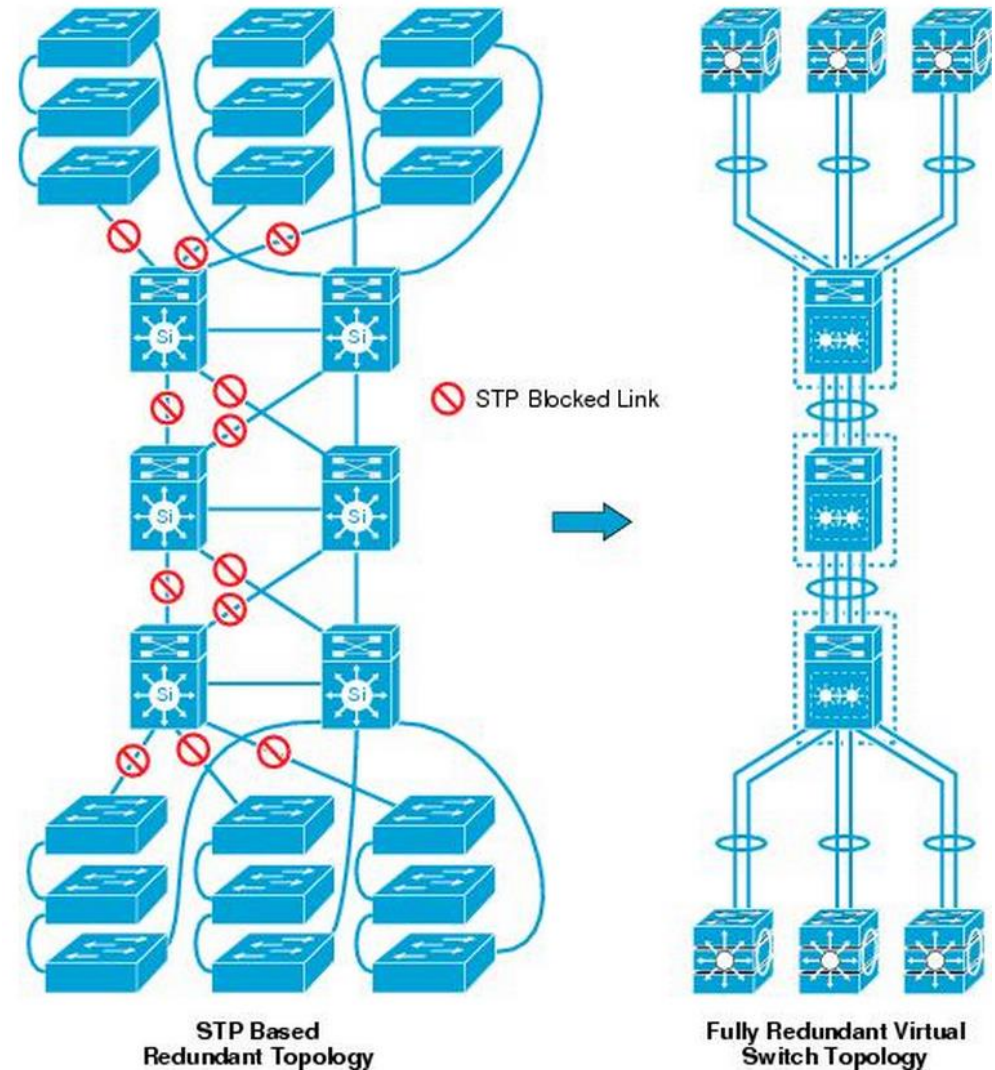
- Used to create redundancy
- Logical grouping of network devices
- Easier to manage configuration



HA Deployment

Virtual Chassis

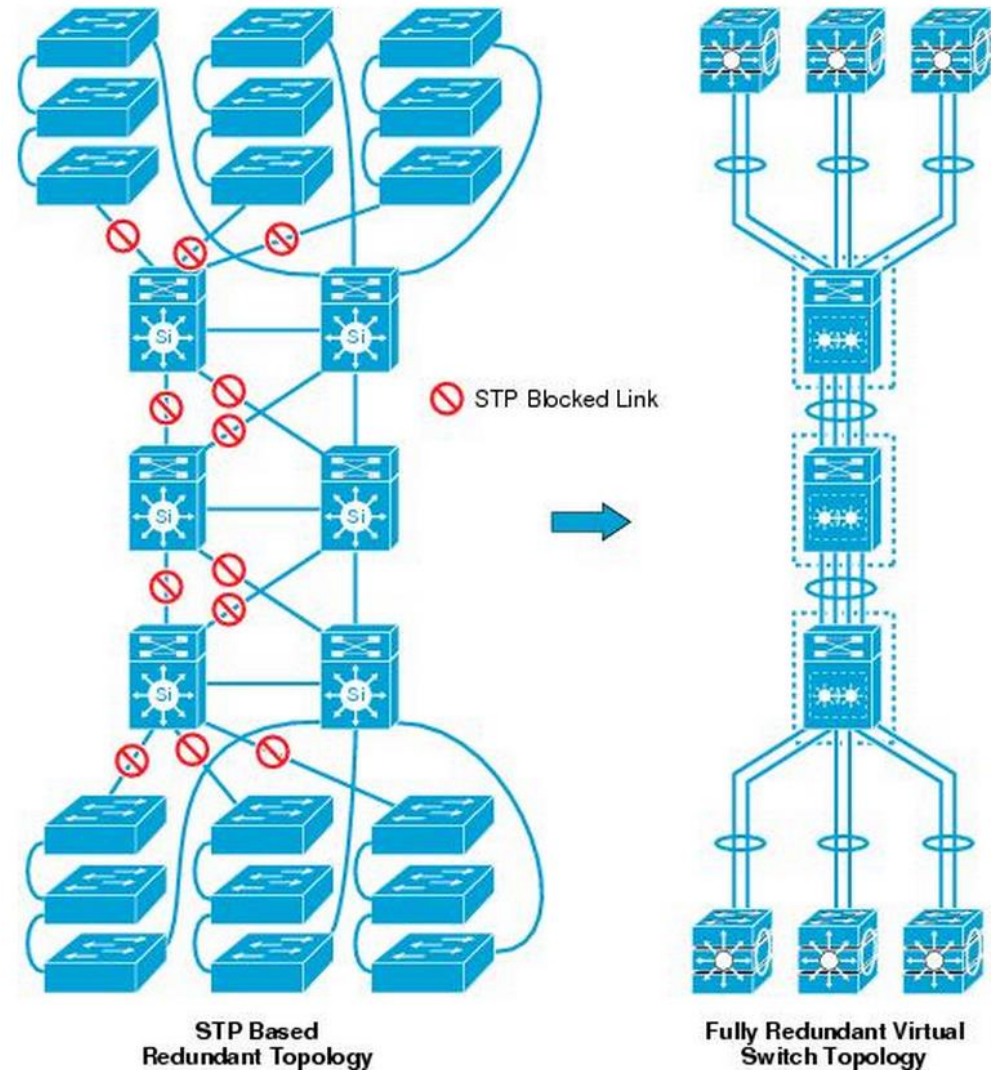
- Removes the need for STP
- Better link utilization



HA Deployment

Virtual Chassis

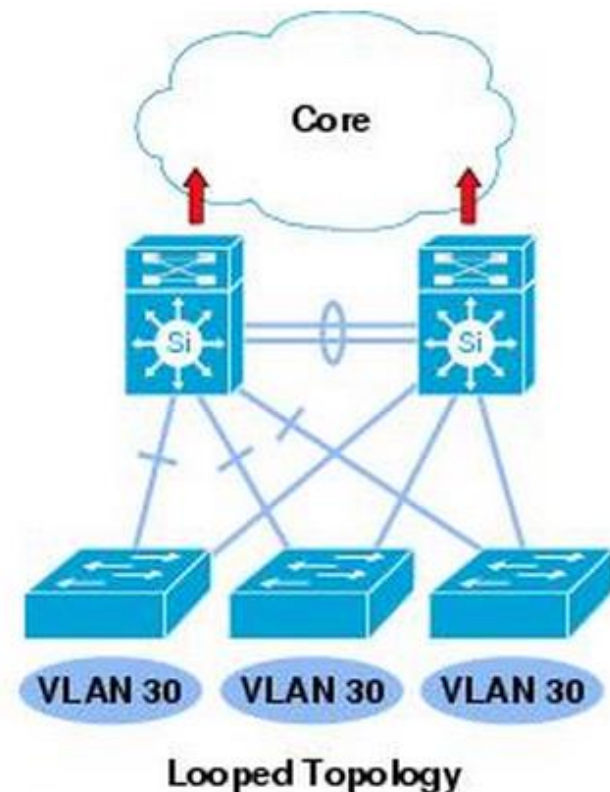
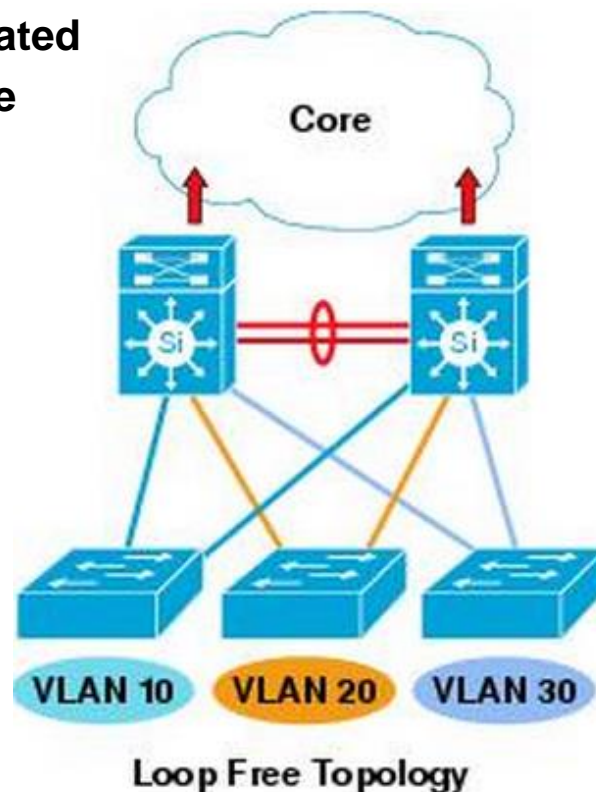
- Removes the need for STP
- Better link utilization



HA Deployment

Non Spanning VLANs

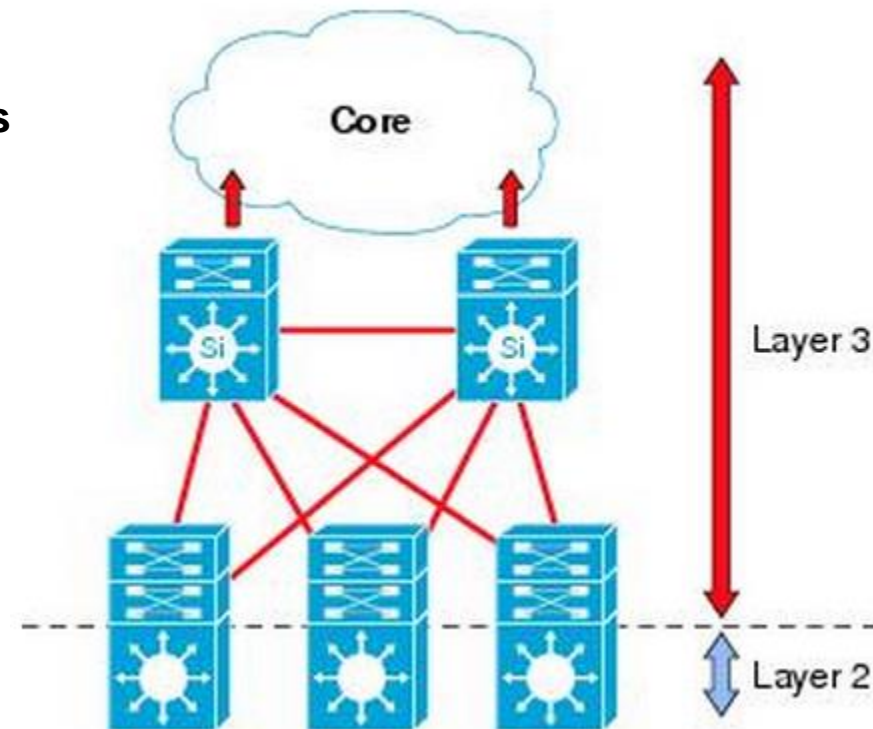
- The Vlan does not span more than one access layer switch
- No networks loops is created
- No need for spanning tree
- Routed Interconnect



HA Deployment

Routed Access Layer

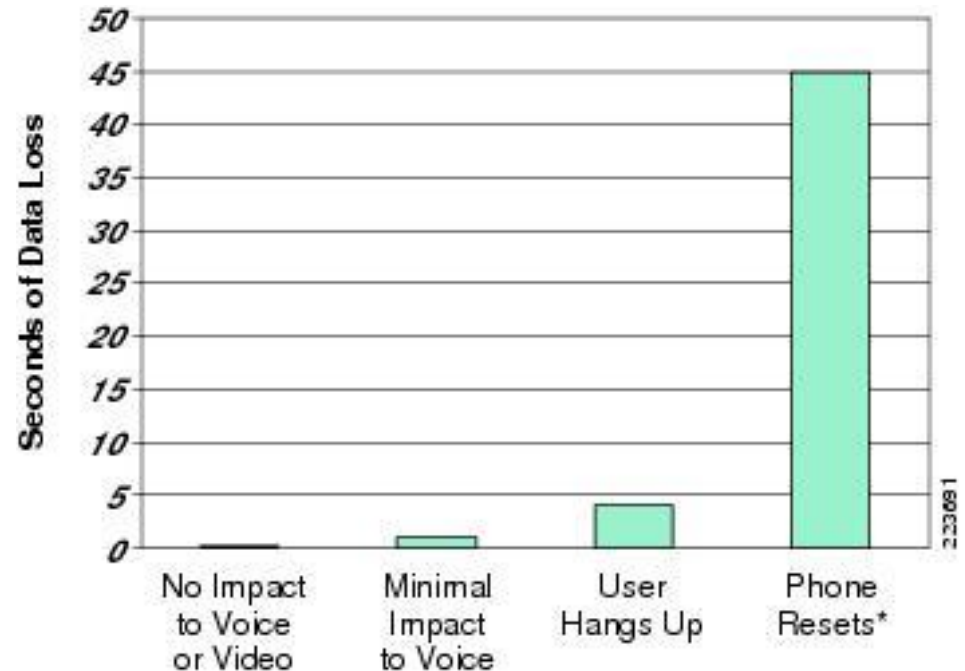
- Routing is pulled all the way down to the Access Layer Switch
- No STP on routed interfaces
- Better uplink utilization because of equal cos loadbalancing



HA Deployment

Voice implementation

- Smaller tolerance for errors than Data
- High Availability is required for IPT
- 911 Calls



*The time for a phone to reset is variable and depends on the signaling protocol, SCCP or SIP, and the state of the call, active, ringing, ...

HA Deployment



?