



Printudlægning i Orcad

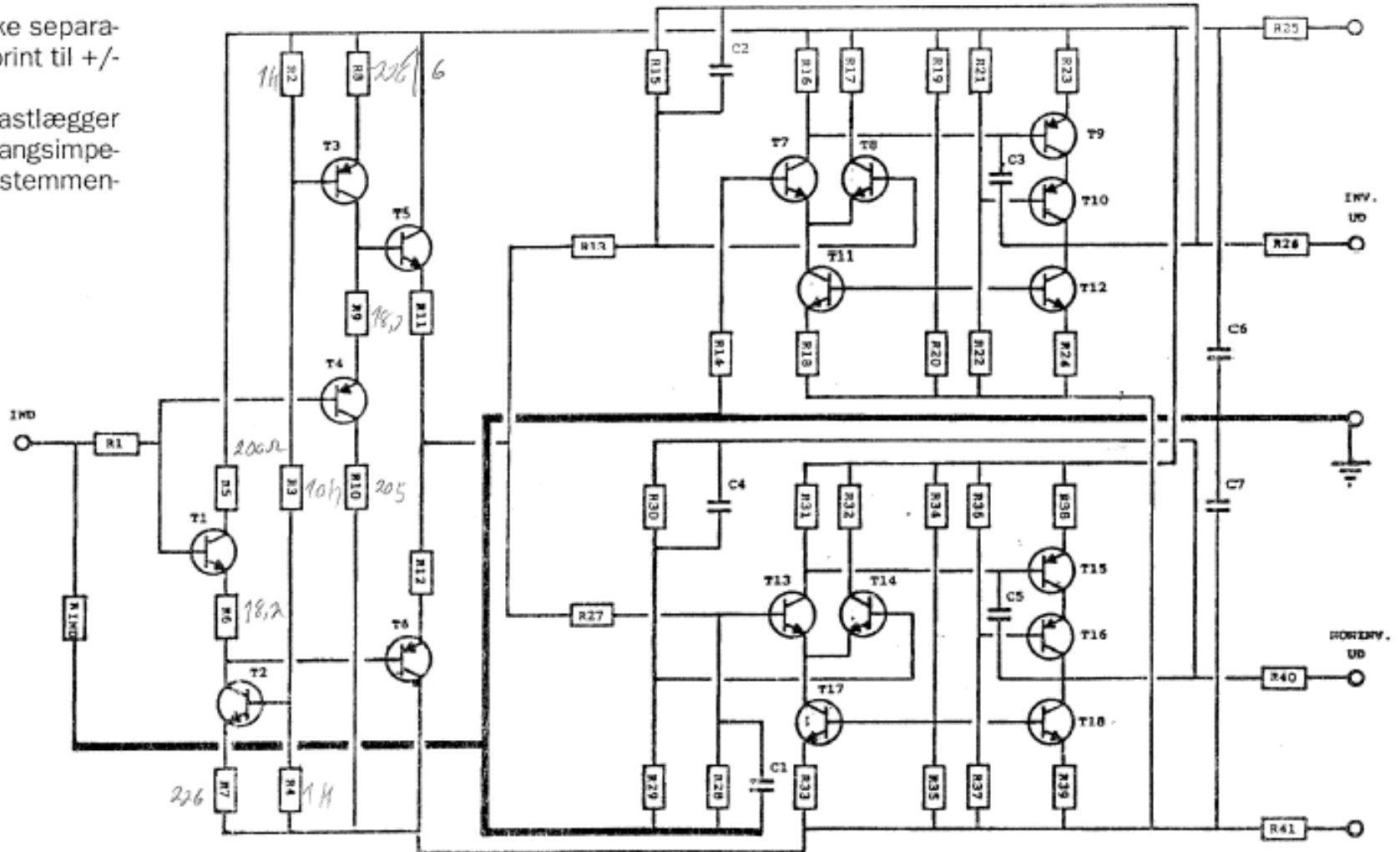
Lkaa 2010



Line forstærker

ikke separat
print til +/-

" fastlægger
gængsimpedansen



Stykliste for en kanal

Balanceret linieforstærker, styklister for en kanal:

Modstande, alle 1% metalfilm:

R1,2,4	1 kohm
R3,13,19,22,27,29,34,37	10 kohm
R5,10,18,33	205 ohm ✓
R6,9	18,2 ohm
R7,8,23,38	226 ohm ✓
R11,12,25,41	10 ohm ✓
R14	6,65 kohm ✓
R15,28,30	20,5 kohm ✓
R16,17,31,32	1,21 kohm ✓
R20,35	464 ohm ✓
R21,36	1,78 kohm ✓
R24,26,39,40	100 ohm ✓
Rind	valgfri, se tekst

Kondensatorer:

C1	6,8 pF	keramisk
C2,3,4	10 pF	keramisk
C5	3,3 pF	keramisk
C6,7	0,1µF	63 volt Wima

Transistorer:

786 DPK	T1,2,5,7,8,11,12,13,14,17,18	29	BC 550B
737 PNP	T3,4,6,9,10,15,16	2	BC 560B

Forsyningsspænding +-15V

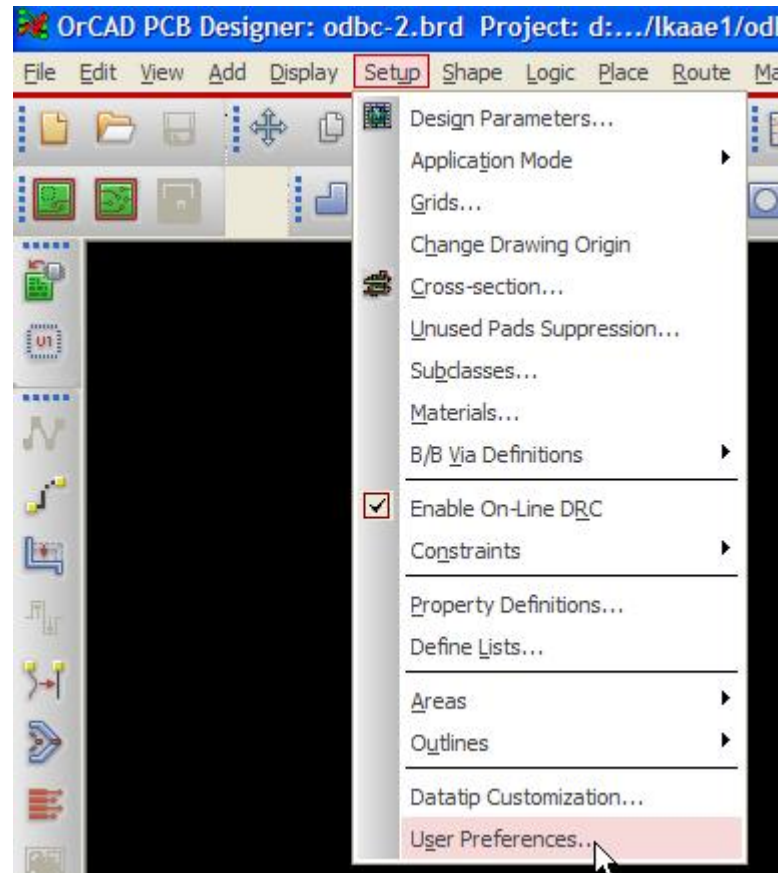


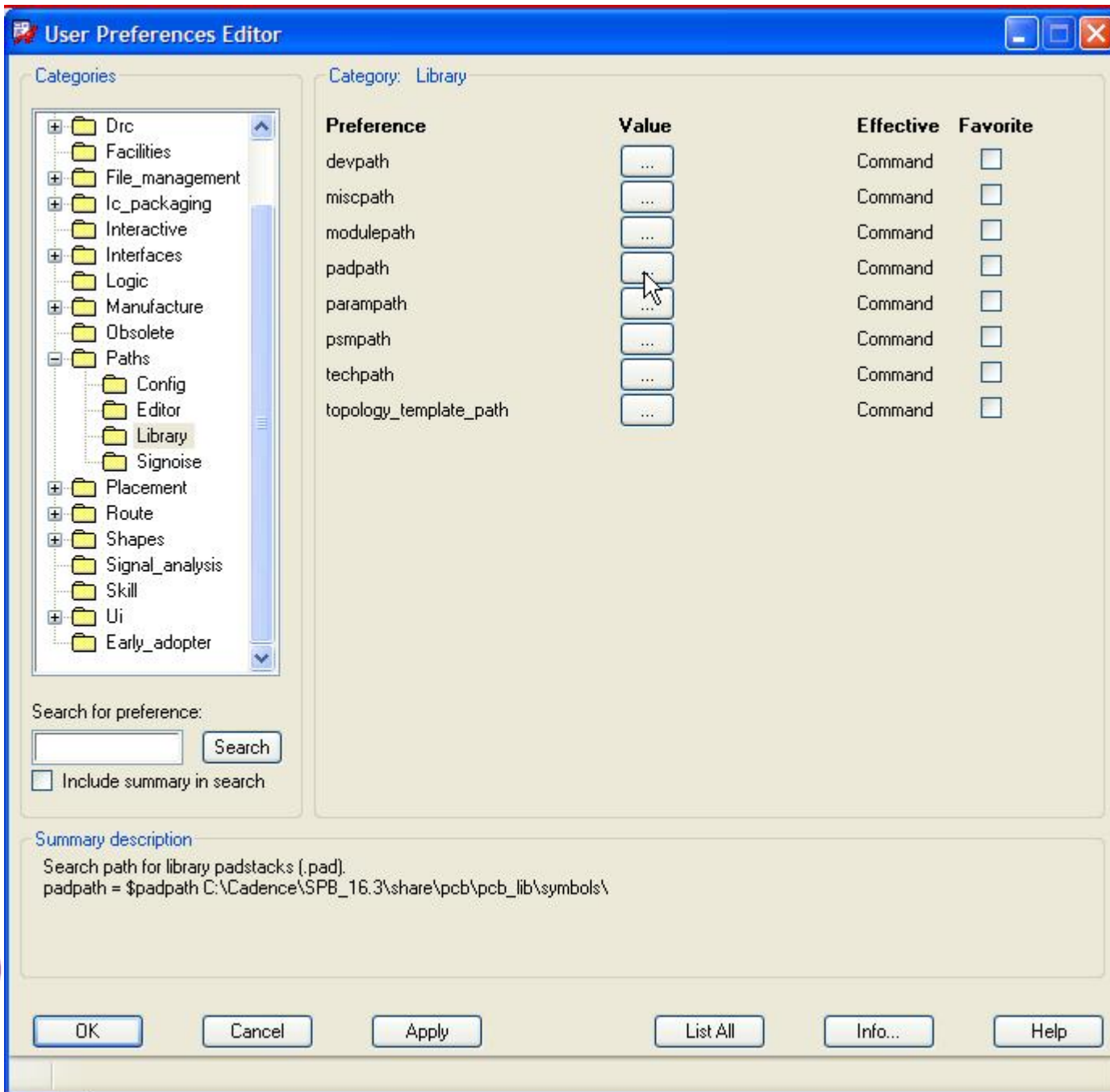
Printudlægning i Orcad

- Tegn diagram og simulere opstilling, så I er sikker på at den virker!!
- Footprints på komponenterne!
- Opsætning af stier i PCB editoren til footprints.

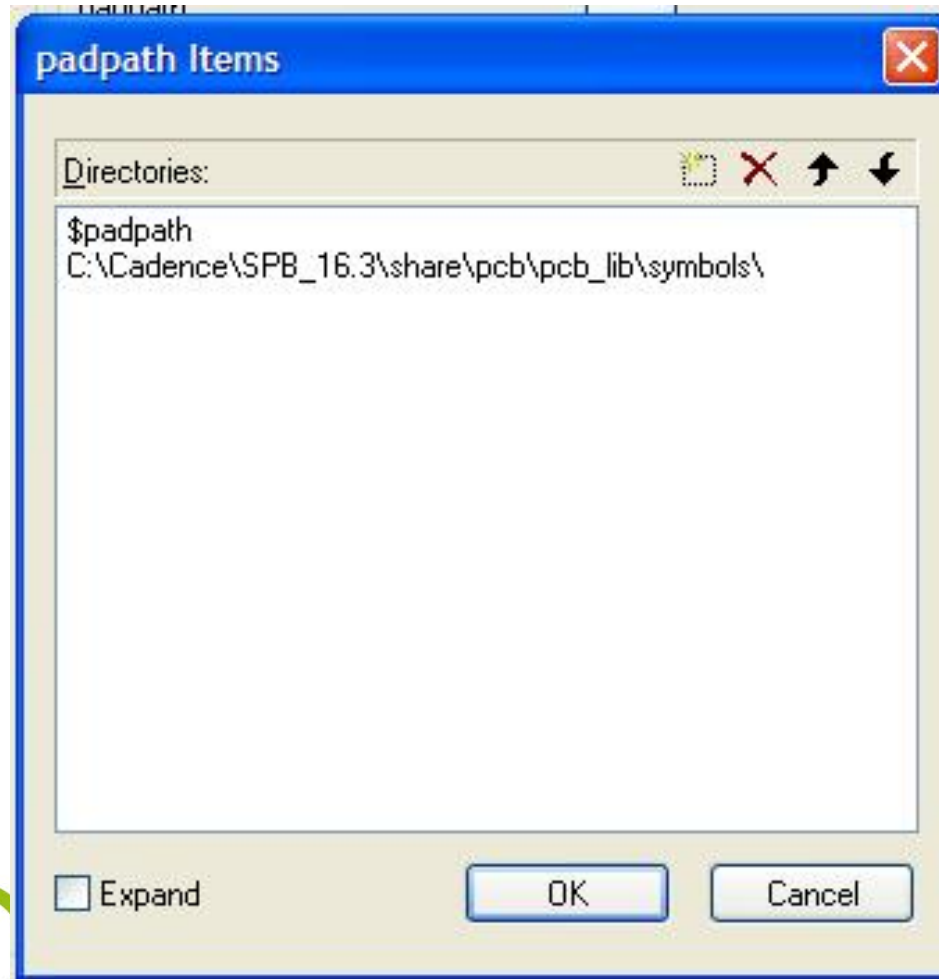


Path til PAD og PSM

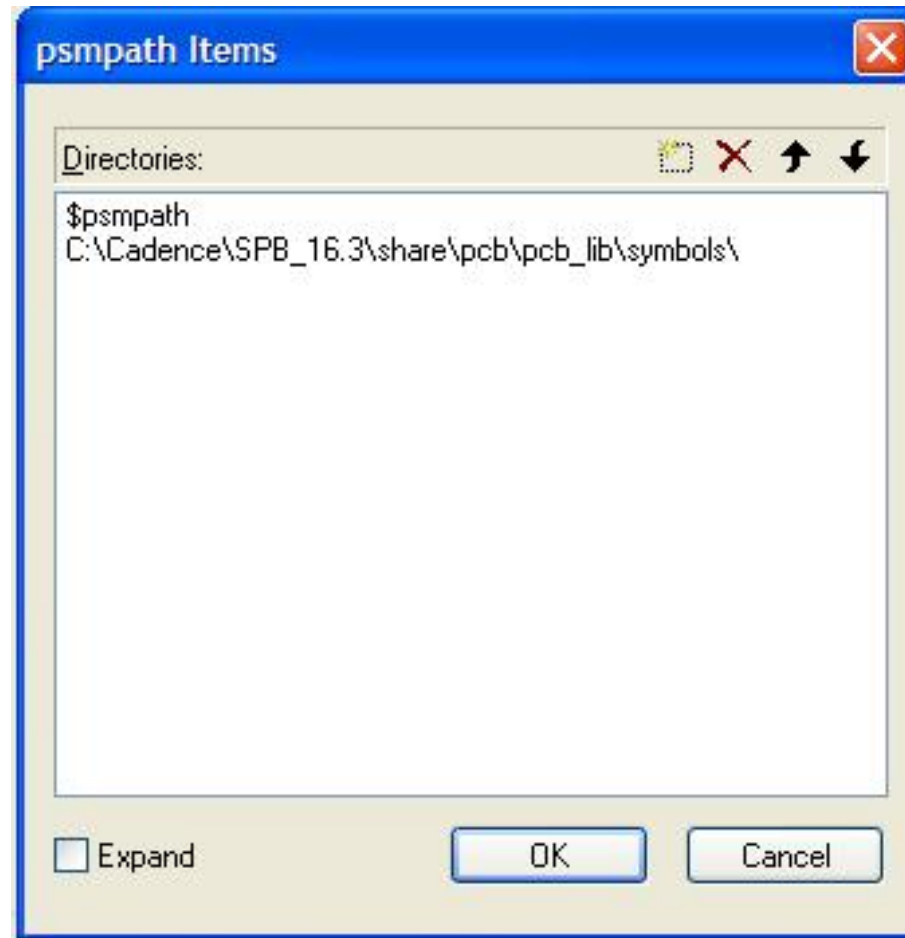




Pad path



PSM path



PCB editoren

- Start PCB editor
- Lave et board (6X10 cm) med boardwizarden!
- Fra Orcad hentes komponenterne over i PCB editoren.



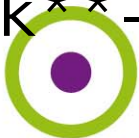
Footprints

- Brug: Allegro free physical viewer til at se footprint med!
- Modstande:
 - Res300.dra
 - Res400.dra
 - Res600.dra
 - Res800.dra
 - Res1000.dra

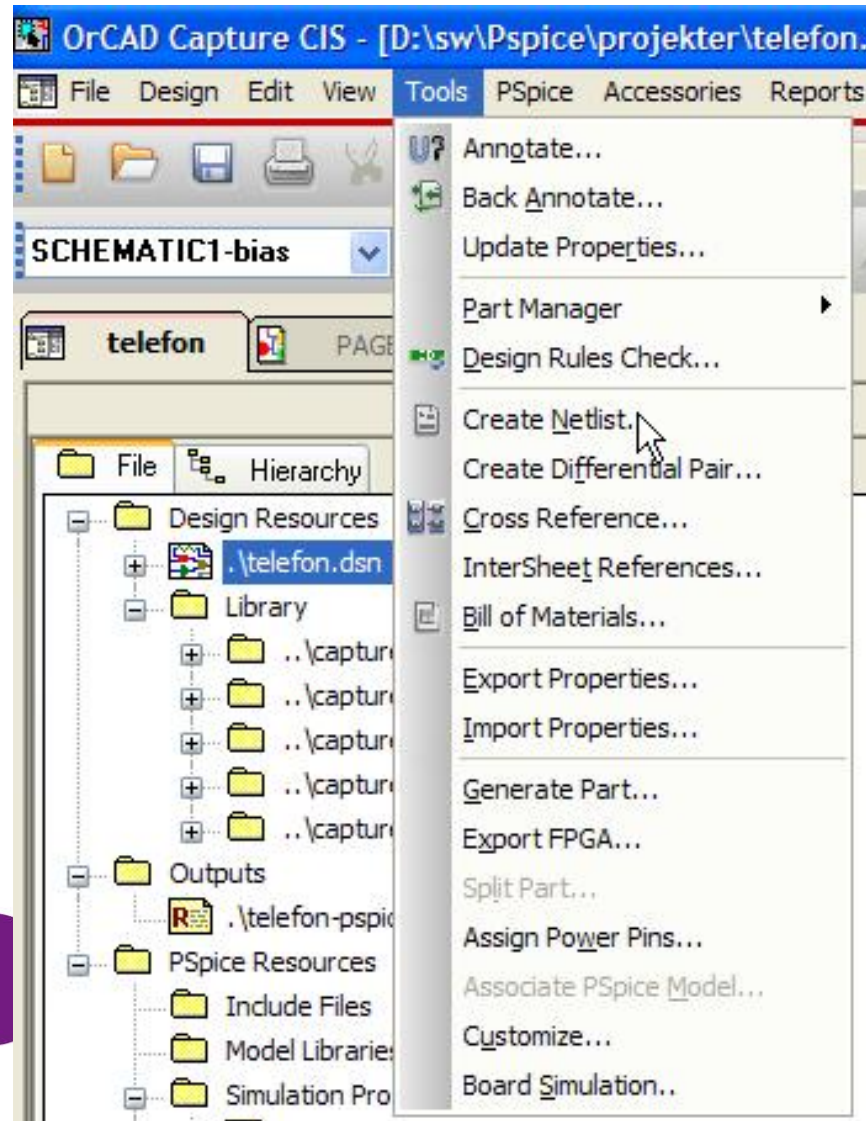


Footprints

- Transistor
 - T092.dra
- Stik:
 - Jumper2.dra
 - Jumper3.dra
- Kondensatorer:
 - Cap196.dra
 - Cap300.dra
 - Cap400.dra
 - Cap600.dra
 - Ck** -10pf.dra



Fra Orcad startes PCB op!



Board lægges ind i Input Board

